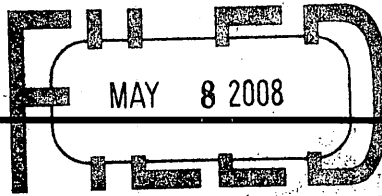


REGISTER OF DEEDS OFFICE
ONEIDA COUNTY, WIS.



At _____ O'Clock _____ M
THOMAS H. LEIGHTON
REGISTER OF DEEDS

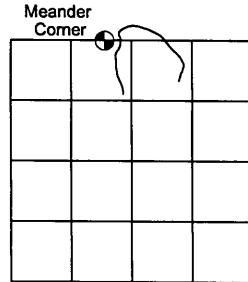
U.S. PUBLIC LAND SURVEY MONUMENT RECORD

Note: This form is intended and designed to fulfill all requirements of the Wisconsin Administrative Code, Chapter A-E 7.08 U.S. Public Land Monument Record (3)(a)(b)(c)(d)(e)(f)(g)(h)(i). An additional sheet may be added if necessary to conform with said requirements.

(a) CORNER LOCATION:

W. Meander Corner, on N. line Section 13
Township 39 North
Range 4 East
Town of Minocqua
County of Oneida

ONEIDA COUNTY
GRID COORDINATES
North: 251498.11
East: 130524.05
Control Station: Vilas County 310S
Latitude: 45-55-08.39995
Longitude: 89-59-22.41041
Datum NAD 83 (1991) Method RTK



(b) HISTORY OF ORIGINAL CORNER ESTABLISHMENT

Original Surveyor: Alexander Anderson
Date of Survey: Commenced May 9, 1856
Completed May 22, 1865

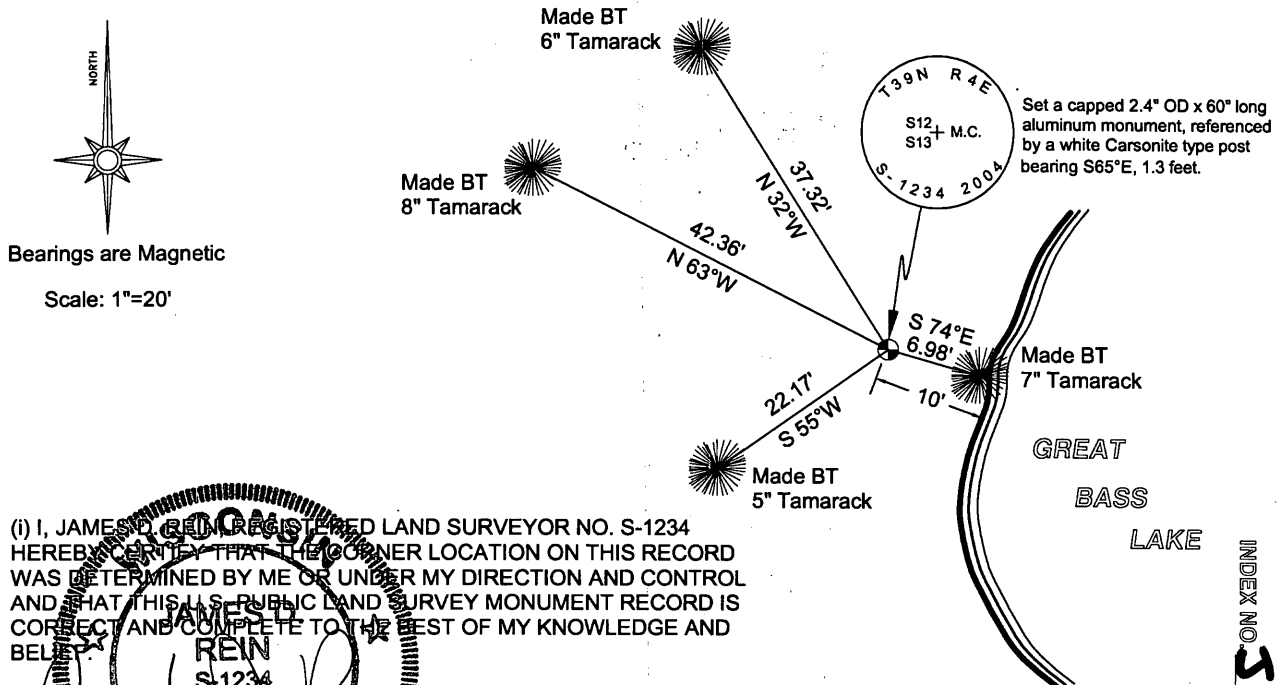
Original B.T.'S: 24" White Pine, N28°E, 20 links
10" Spruce, N54°W, 12 links

SECTION 13

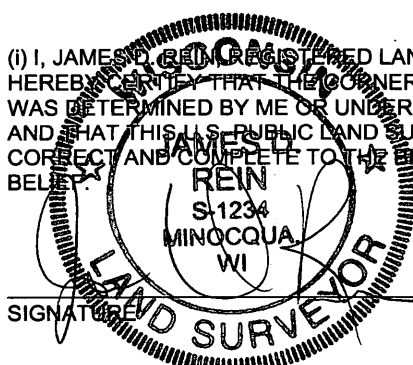
(f)(g)(h) DESCRIPTION OF MONUMENT FOUND AT THIS CORNER AND IF IT WAS ACCEPTED, STATE ALL EVIDENCE (MATERIAL, TESTIMONIAL, OCCUPATIONS, PLATS, RECORDS, OTHER MONUMENTS) USED AS A BASIS FOR ESTABLISHING LOCATION. IF NOT ACCEPTED OF IF NOTHING WAS FOUND, STATE EVIDENCE USED AS BASIS FOR ESTABLISHING LOCATION. IF REESTABLISHED THROUGH LOST CORNER PROPORTIONATE METHODS, INDICATE ALL MONUMENTS, DISTANCES AND DIRECTIONS USED TO ESTABLISH. INDICATE TYPE OF MONUMENT AND SIGN POST FOUND OR SET.

February 11, 2004: James D. Rein, RLS No. 1234, searched, but was unable to recover any evidence for the meander corner where the north line of Section 13 intersects the westerly shore of Great Bass Lake. Thus we re-established the corner on line between the recovered northwest corner of Section 13, which bears N89°51'55"W, 2016.42 feet, and the recovered meander corner where the north line of said Section 13 intersects the easterly shore of Great Bass Lake, which bears S89°51'55"E, 847.65 feet. We mark the corner with a capped 2.4" OD x 60" long aluminum monument and make reference ties to the corner as shown in the plan view.

(c)(d)(e) PLAN VIEW OF CORNER WITH TIES TO AT LEAST 4 WITNESS MONUMENTS. IF IN DISAGREEMENT WITH PREVIOUSLY ESTABLISHED CORNER, SHOW THE DISTANCE BETWEEN THE TWO CORNERS AND ALSO INDICATE THE TIES TO THE DISPUTED CORNER.



(i) I, JAMES D. REIN, REGISTERED LAND SURVEYOR NO. S-1234 HEREBY CERTIFY THAT THE CORNER LOCATION ON THIS RECORD WAS DETERMINED BY ME OR UNDER MY DIRECTION AND CONTROL AND THAT THIS U.S. PUBLIC LAND SURVEY MONUMENT RECORD IS CORRECT AND COMPLETE TO THE BEST OF MY KNOWLEDGE AND BELIEF.



3/4/04
DATE

3904120023

INDEX NO. S-22-23