

U.S. PUBLIC LAND SURVEY MONUMENT RECORD

Note: This form is intended and designed to fulfill all requirements of Wisconsin Administrative Code, Chapter A-E 7.08 U.S. Public Land Survey Monument Record (3)(a)(b)(c)(d)(e)(f)(g)(h)(i). An additional sheet may be added if necessary to conform with said requirements.

(a) CORNER LOCATION:

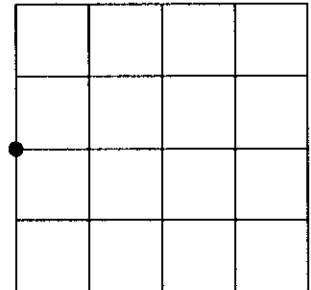
West 1/4 corner of Sec. 7
 Township 39 North
 Range 5 East
 Town/City/Village ~~XXXXXX~~ Minocqua
 County of Oneida

State Plane Coordinates

X _____

Y _____

Datum Base _____



(b) HISTORY OF ORIGINAL CORNER ESTABLISHMENT

Original Surveyor: Alfred Millard Original B.T.'S SECTION 7
 Date of Survey: Commenced Sept. 22nd, 1860 Hemlock 7" S58°W, 20 links
 Completed Sept. 22nd, 1860 W. Pine 12" S10°E, 18 links

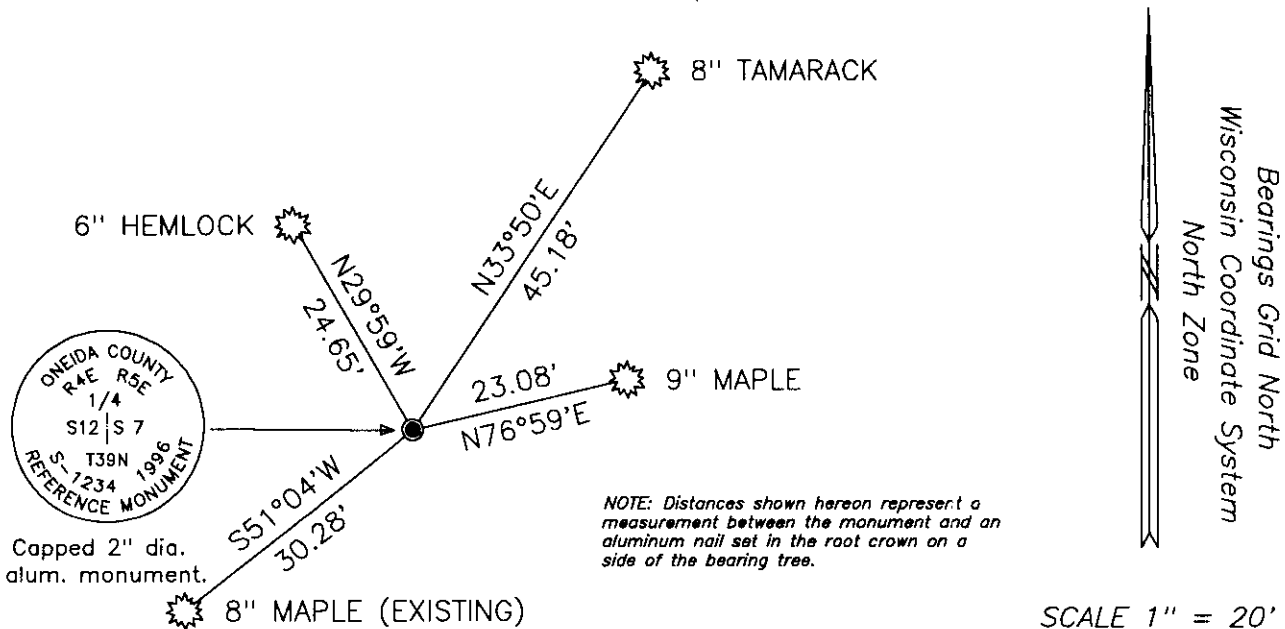
(f)(g)(h) Description of monument found at this corner and if it was accepted, state all evidence (material, testimonial, occupational, plats, records, other monuments) used as a basis for establishing location. If not accepted or if nothing was found, state evidence used as basis for establishing location. If reestablished through lost corner proportionate methods, indicate all monuments, distances and directions used to establish. Indicate type of monument and sign post found or set.

April, 1970 - Williams S. Cameron, Reg. Land Surveyor (Oneida County Surveyor File No. A-93) identifies corner as being monumented by an iron pipe: referenced by an 8" Spruce N72°E, 10.3 feet and by a 7" Maple S44°W, 30.0 feet.

July 5th, 1977 - Stuart L. Foltz, Reg. Land Surveyor (County Plat of FOREST GREEN V in Section 12, T39N, R4E) identifies corner monument as being a 2" diameter iron pipe and wooden post found in place.

April 8th, 1996 - James D. Rein, Reg. Land Surveyor: Recovered 2" dia. iron pipe and replaced with a capped 2" diameter x 60" long aluminum monument. Set plastic marker post one foot north of corner monument. See plan view for reference ties to existing and new bearing trees.

(c)(d)(e) Plan view of corner with ties to at least 4 witness monuments. If in disagreement with previously established corner, show the distance between the two corners and also indicate the ties to the disputed corner.



(i) I, James D. Rein, Registered Land Surveyor No. 1234, hereby certify that the corner location on this record was determined by me or under my direction and control and that this U.S. Public Land Survey Monument Record is correct and complete to the best of my knowledge and belief.

James D. Rein May 14th, 1996
 Signature Date



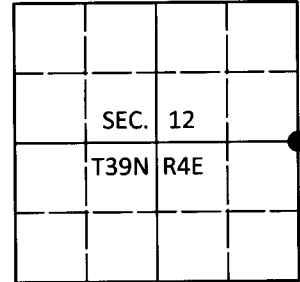
3964122000

U.S. PUBLIC LAND SURVEY MONUMENT RECORD

Note: This form is intended and designed to fulfill all requirements of Wisconsin Administrative Code, Chapter A-E 7.08 U.S. Public Land Survey Monument Record (3)(a-1).

(a) CORNER LOCATION
1/4 Cor. of Secs. 7 & 12
Township 39 North
Range 4 & 5 East of the 4th P.M.
Town of Minocqua
County of Oneida

WISCRS - Oneida County
N: 254,443.20 USft
E: 134,012.19 USft
Datum: NAD 83(2011)
GNSS Method: Real-Time Network
GNSS Control: WISCORS VRS



(b) HISTORY OF ORIGINAL CORNER ESTABLISHMENT

Original Surveyor: Original Accessories:

Date of Survey Commenced:
Completed:

(b)(f)(g)(h) Description of monument found at this corner and if it was accepted, state all evidence (material, testimonial, occupational, plats, records, other monuments) used as a basis for accepting. If not accepted or if nothing was found, state evidence used as basis for establishing location. If re-established through lost corner proportionate methods, indicate all monuments, distances and directions used to establish. Indicate type of monument and sign post found or set.

This is a perpetuation of a previous USPLS Monument Record by James D. Rein, RLS dated May 14, 1996 and filed in the office of the Oneida County Register of Deeds. A complete history of the corner can be found on the previous monument record. I accept the previous location as a true and faithful perpetuation or reestablishment of the original corner location and further perpetuate it as follows.

January 12, 2017: Jeff Austin visited the corner and recovered the record monument, a 2-1/2" diam. aluminum pipe with a 3-1/4" diam. Oneida Co. aluminum cap projecting 12" above the ground surface. The record accessories were found in substantial agreement with the previous record and were not remeasured as the sole purpose of this work is to report the coordinates of the corner point.

The coordinate value shown has been verified by at least one of the following methods: 1) comparison to a previously GPS determined published value; 2) the value is the average of two or more GPS observations at a markedly different time; 3) one or more distances were measured back to the GPS observed corner from temporary GPS observed offset locations.

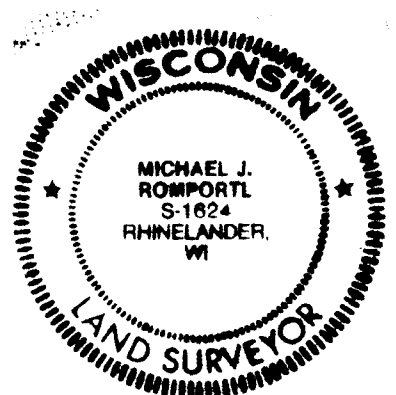
(c)(d)(e) Plan view of corner with ties to at least 4 witness monuments. If in disagreement with previously established corner, show the distances between the two corners and also indicate the ties to the disputed.

REGISTER OF DEEDS OFFICE
ONEIDA COUNTY
FILED

JUL 11 2017

AT O'CLOCK M
KYLE J. FRANSON
REGISTER OF DEEDS

(i) I, Michael J. Romportl, Professional Land Surveyor No. S-1624, hereby certify that the corner location on this record was determined by me or under my direction and control and that this U.S. Public Land Survey Monument Record is correct and complete to the best of my knowledge and belief.



Michael J. Romportl
Signature
7/11/2017
Date