

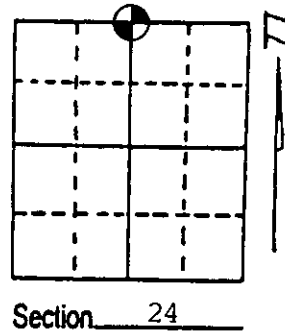
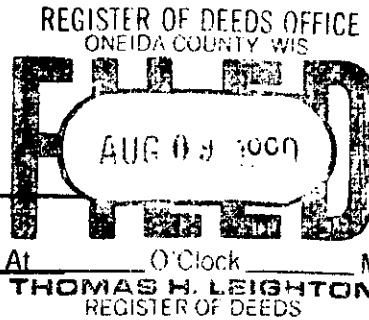
U.S. PUBLIC LAND SURVEY MONUMENT RECORD

Note: This form is intended and designed to fulfill all requirements of Wisconsin Administrative Code, Chapter A-E 7.08 U.S. Public Land Survey Monument Record (3) (a) (b) (c) (d) (e) (f) (g) (h) (i). An additional sheet may be added if necessary to conform with said requirements.

(a) Corner location: Township 39 North
 Range 4 East/West

Town/City/Village Minocqua

County Oneida



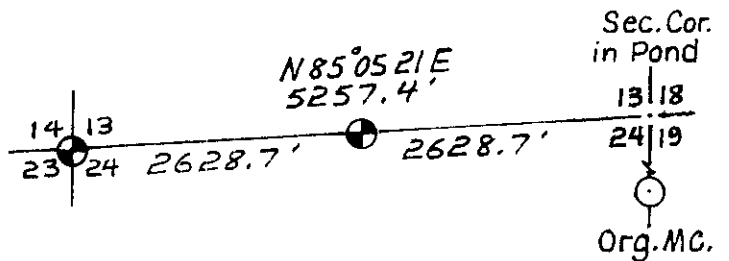
At O'Clock M
 THOMAS H. LEIGHTON
 REGISTER OF DEEDS

Section 24

(b) (f) (g) (h) Description of monument found at this corner and if it was accepted, state all evidence (material, testimonial, occupational, plats, records, other monuments) used as a basis for accepting. If not accepted or if nothing was found, state evidence used as basis for establishing location. If reestablished through lost corner proportionate methods, indicate all monuments, distances and directions used to establish. Indicate type of monument found or set and sign post.

Original Survey by Alex Anderson, May 9, 1865 - Monument: Wood Post
 Witnesses: Y. Pine 16" N67°W 20 links - W. Pine 12" S38°E 27 links.

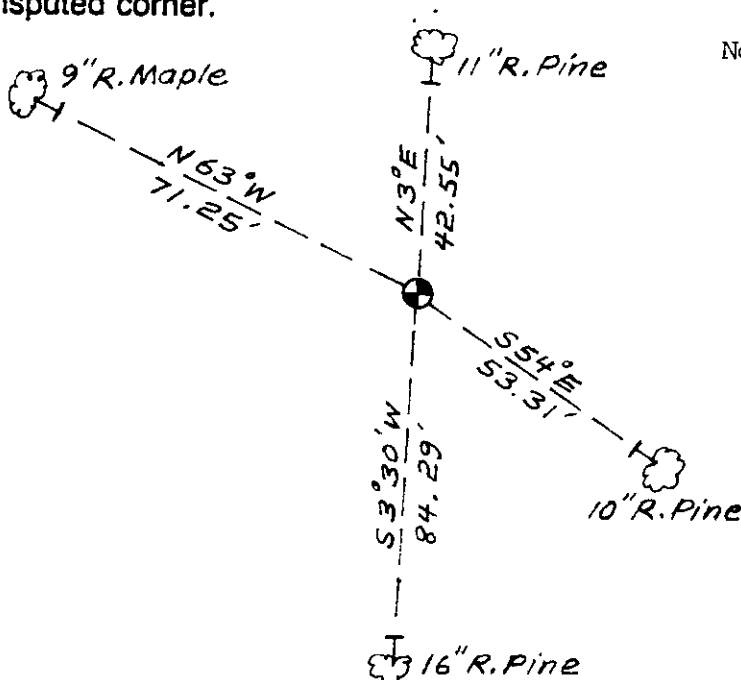
No original or other evidence found.



I set this corner with a County Berntsen Mon. and Plastic Post at one half distance on line as shown.

⊕ = Berntsen & Post

(c) (d) (e) Plan view of corner with ties to at least 4 witness monuments. If in disagreement with previously established corner, show the distances between the two corners and also indicate the ties to the disputed corner.



Note: measured to the head of 6" nails.

(i) I, William H. Stuth, RLS No. S-1418
 (type or print name) certify that the corner location on this record was determined by me or under my direction and control and that this U.S. Public Land Survey Monument Record is correct and complete to the best of my knowledge and belief.

William H. Stuth

June 28, 1990

Signature

Date



Index No. N-23

Stamp

3904130020