

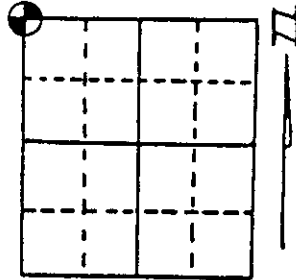
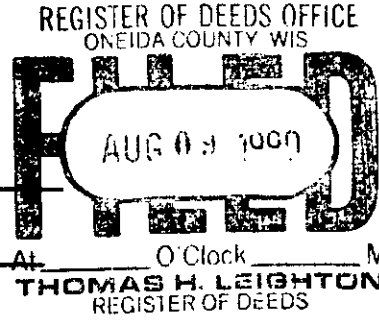
# U.S. PUBLIC LAND SURVEY MONUMENT RECORD

Note: This form is intended and designed to fulfill all requirements of Wisconsin Administrative Code, Chapter A-E 7.08 U.S. Public Land Survey Monument Record (3) (a) (b) (c) (d) (e) (f) (g) (h) (i). An additional sheet may be added if necessary to conform with said requirements.

(a) Corner location: Township 39 North  
 Range 4 East/West

Town/City/Village Minocqua

County Oneida



Section 24

(b) (f) (g) (h) Description of monument found at this corner and if it was accepted, state all evidence (material, testimonial, occupational, plats, records, other monuments) used as a basis for accepting. If not accepted or if nothing was found, state evidence used as basis for establishing location. If reestablished through lost corner proportionate methods, indicate all monuments, distances and directions used to establish. Indicate type of monument found or set and sign post.

Original Survey by Alex Anderson, May 9, 1865 - monument: Wood Post  
 Witnesses: Hemlock 11" N14°W 19 links - Hemlock 12" S33°E 49 links.

No original evidence found.

Found - Nekoosa Paper Co. Post used by Wm. S. Cameron, RLS in 1966 for his resurvey of Section 13.

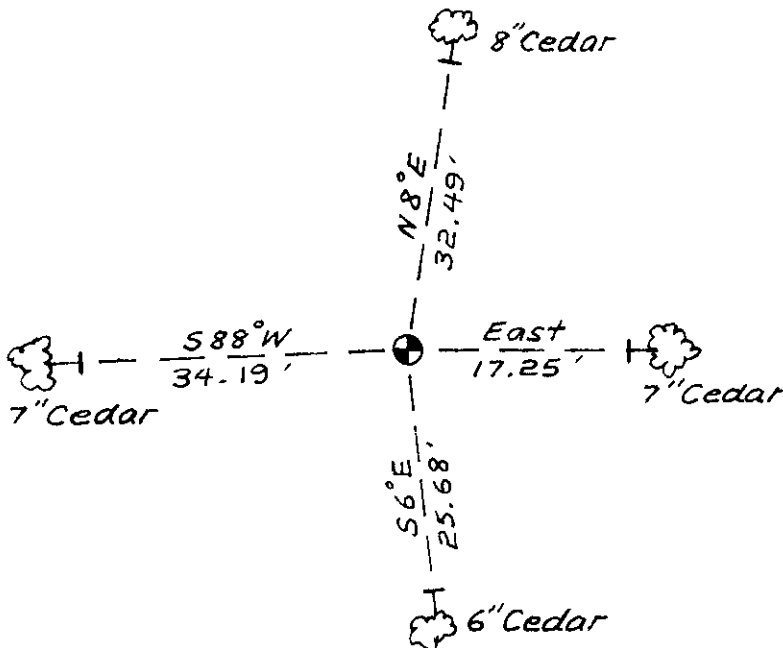
Nekoosa records show they set this corner in 1961 from established corners by proportionate methods at S7°11'E 2625.9' from the W1/4 cor. of Sec. 13, N1°49'E 5213.4' from the SW Cor. of Sec. 24, 586°21'W 5255.1' from the NE Cor. of Sec. 24, and S89°36'E 5234.7' from the NW Cor. of Sec. 23.

I recently surveyed the north and west lines of Sec. 24 and our distances agreed within 2 ft. at this corner.

I replaced this post with a County Berntsen Mon. and Plastic Post.

(c) (d) (e) Plan view of corner with ties to at least 4 witness monuments. If in disagreement with previously established corner, show the distances between the two corners and also indicate the ties to the disputed corner.

Note: measured to the head of 6" nails.



(i) I, William H. Stuth, RLS No. S-1418  
 (type or print name) certify that the corner location on this record was determined by me or under my direction and control and that this U.S. Public Land Survey Monument Record is correct and complete to the best of my knowledge and belief.

William H. Stuth June 28, 1990  
 Signature Date



Index No. N - 21

Stamp  
390414 0000