

At _____ O'Clock _____ M
THOMAS H. LEIGHTON

U.S. PUBLIC LAND SURVEY MONUMENT RECORD

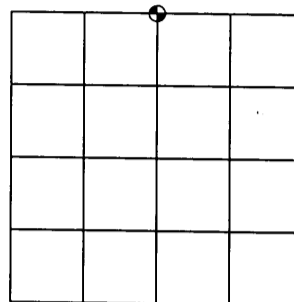
Note: This form is intended and designed to fulfill all requirements of the Wisconsin Administrative Code, Chapter A-E 7.08 U.S. Public Land Monument Record (3)(a)(b)(c)(d)(e)(f)(g)(h)(i). An additional sheet may be added if necessary to conform with said requirements.

(a) CORNER LOCATION:

North quarter corner of Section 23
Township 39 North
Range 4 East
Town of Minocqua
County of Oneida

COORDINATES

North: 246319.2743
East: 126120.4355
Control Station: 1281 (by Austin 5/8/08)
Latitude: 45°50'55.32762" N
Longitude: 89°58'26.85798" W
Datum: NAD 83 (1991) Method: RTK



SECTION 23

(b) HISTORY OF ORIGINAL CORNER ESTABLISHMENT

Original Surveyor: Alexander Anderson
Date of Survey: Commenced May 9th, 1865
Completed May 22nd, 1865

Original B.T.'S Aspen 12" S72°W 8 links
Pine 12" N36°E 25 links

(f)(g)(h) DESCRIPTION OF MONUMENT FOUND AT THIS CORNER AND IF IT WAS ACCEPTED, STATE ALL EVIDENCE (MATERIAL, TESTIMONIAL, OCCUPATIONAL, PLATS, RECORDS, OTHER MONUMENTS) USED AS A BASIS FOR ESTABLISHING LOCATION. IF NOT ACCEPTED OF IF NOTHING WAS FOUND, STATE EVIDENCE USED AS BASIS FOR ESTABLISHING LOCATION. IF REESTABLISHED THROUGH LOST CORNER PROPORTIONATE METHODS, INDICATE ALL MONUMENTS, DISTANCES AND DIRECTIONS USED TO ESTABLISH. INDICATE TYPE OF MONUMENT AND SIGN POST FOUND OR SET.

February 3rd, 2004 - James D. Rein, RLS No. 1234, Searched for evidence of the original corner and recover a 1 1/4" O.D. iron pipe. I replaced it with 2.4" diameter x 30" long Oneida County capped aluminum monument.

May 12th, 2008 - James D. Rein, RLS No. 1234, Having become aware of a major error in the survey which the previous 1 1/4" iron pipe was based upon, and after discussion with the County Surveyor I re-establish the corner by single proportionate measurement between the NW & NE corners of the section. I move my 2004 aluminum monument to the computed position and make new accessories as shown in plan, and also reset the erroneous iron pipe in it's original found position.

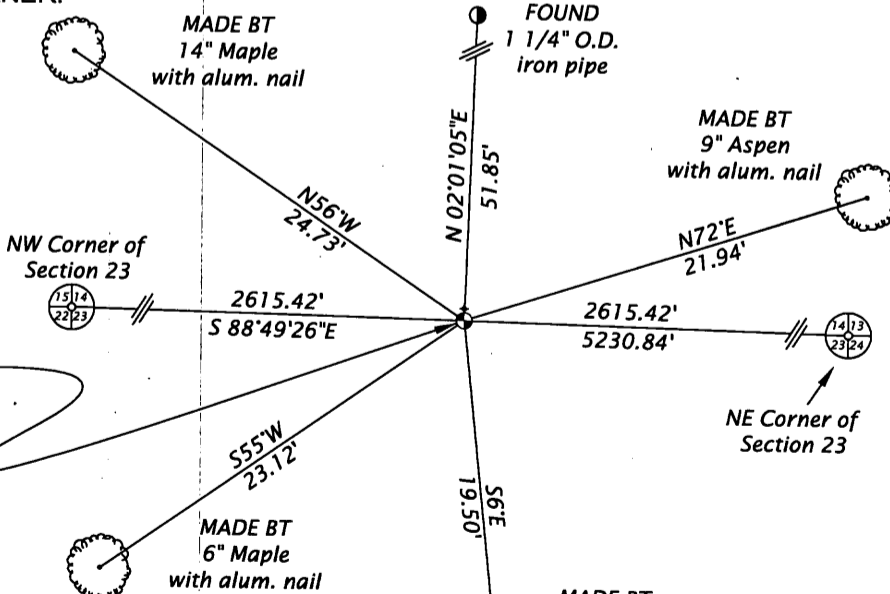
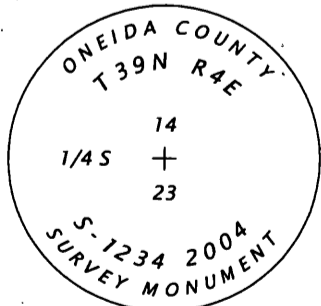
(c)(d)(e) PLAN VIEW OF CORNER WITH TIES TO AT LEAST 4 WITNESS MONUMENTS. IF IN DISAGREEMENT WITH PREVIOUSLY ESTABLISHED CORNER, SHOW THE DISTANCE BETWEEN THE TWO CORNERS AND ALSO INDICATE THE TIES TO THE DISPUTED CORNER.

Scale 1" = 10'



Bearings to trees are magnetic, all others are Oneida County Grid

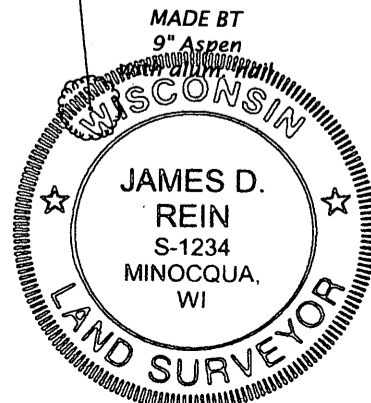
SET
2.4" dia. x 30" long capped aluminum monument extending 5" above the ground.
Set white plastic post North 0.9' of monument



(i) I, JAMES D. REIN, REGISTERED LAND SURVEYOR NO. S-1234 HEREBY CERTIFY THAT THE CORNER LOCATION ON THIS RECORD WAS DETERMINED BY ME OR UNDER MY DIRECTION AND CONTROL AND THAT THIS U.S. PUBLIC LAND SURVEY MONUMENT RECORD IS CORRECT AND COMPLETE TO THE BEST OF MY KNOWLEDGE AND BELIEF.

SIGNATURE

6/03/08
DATE 3904140020



INDEX NO. N-19