

At _____ O'Clock _____ M
THOMAS H. LEIGHTON
REGISTER OF DEEDS

U.S. PUBLIC LAND SURVEY MONUMENT RECORD

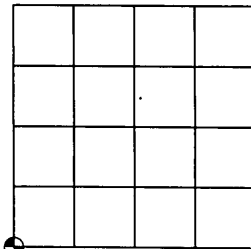
Note: This form is intended and designed to fulfill all requirements of the Wisconsin Administrative Code, Chapter A-E 7.08 U.S. Public Land Monument Record (3)(a)(b)(c)(d)(e)(f)(g)(h)(i). An additional sheet may be added if necessary to conform with said requirements.

(a) CORNER LOCATION:

SW corner of Section 14
Township 39 North
Range 4 East
Town of Minocqua
County of Oneida

ONEIDA COUNTY
GRID COORDINATES

North: 246372.96
East: 123505.57
Control Station: Vilas County 310S
Latitude: 45-55-08.39995
Longitude: 89-59-22.41041
Datum: NAD 83 (1991) Method: RTK



(b) HISTORY OF ORIGINAL CORNER ESTABLISHMENT

SECTION 14

Original Surveyor: Alex Anderson
Date of Survey: Commenced May 9, 1865
Completed May 22, 1865

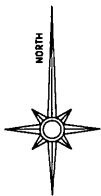
Original B.T.'S: 12" Pine, S75°W, 13 links
14" Pine, N85°E, 36 links

(f)(g)(h) DESCRIPTION OF MONUMENT FOUND AT THIS CORNER AND IF IT WAS ACCEPTED, STATE ALL EVIDENCE (MATERIAL, TESTIMONIAL, OCCUPATIONS, PLATS, RECORDS, OTHER MONUMENTS) USED AS A BASIS FOR ESTABLISHING LOCATION. IF NOT ACCEPTED OR IF NOTHING WAS FOUND, STATE EVIDENCE USED AS BASIS FOR ESTABLISHING LOCATION. IF REESTABLISHED THROUGH LOST CORNER PROPORTIONATE METHODS, INDICATE ALL MONUMENTS, DISTANCES AND DIRECTIONS USED TO ESTABLISH. INDICATE TYPE OF MONUMENT AND SIGN POST FOUND OR SET.

February, 1963: NEPCO map prepared by W. H. Stuth, February 2, 1989, legends the southwest corner of Section 14 as being monumented by a scribed wood post. The prior corner history is unknown and no reference ties are shown.

February 3, 2004: James D. Rein, RLS No. 1234, recovered a 4" square Cedar post scribed "S14 - S15", 3 feet above ground level. I accept the post as the best evidence of the corner position and replace it with a capped 2.4" OD x 30" long flanged bottom aluminum monument extending 6" above ground level. We set a white Carsonite type stake Southwest, 1.1 feet from the corner monument. Ties to reference monuments are shown in the plan view.

(c)(d)(e) PLAN VIEW OF CORNER WITH TIES TO AT LEAST 4 WITNESS MONUMENTS. IF IN DISAGREEMENT WITH PREVIOUSLY ESTABLISHED CORNER, SHOW THE DISTANCE BETWEEN THE TWO CORNERS AND ALSO INDICATE THE TIES TO THE DISPUTED CORNER.

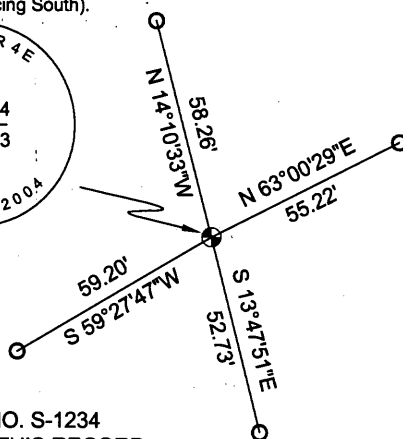
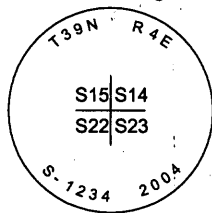


Bearings are referenced to the Oneida County Grid

Scale: 1" = 50'

○ = Set 1.0" OD x 24" long iron pipe with plastic cap

(This corner monument was oriented to read facing South).



(i) I, JAMES D. REIN, REGISTERED LAND SURVEYOR NO. S-1234 HEREBY CERTIFY THAT THE CORNER LOCATION ON THIS RECORD WAS DETERMINED BY ME OR UNDER MY DIRECTION AND CONTROL AND THAT THIS U.S. PUBLIC LAND SURVEY MONUMENT RECORD IS CORRECT AND COMPLETE TO THE BEST OF MY KNOWLEDGE AND BELIEF.

SIGNATURE  

DATE 3/11/04 3904150000
390150000

INDEX NO. N-17