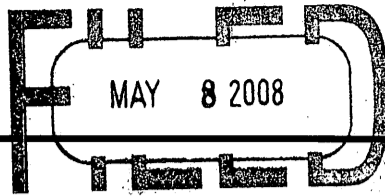


REGISTER OF DEEDS OFFICE  
ONEIDA COUNTY, WIS.



At \_\_\_\_\_ O'Clock \_\_\_\_\_ M  
**THOMAS H. LEIGHTON**  
REGISTER OF DEEDS

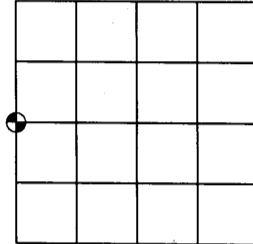
**U.S. PUBLIC LAND SURVEY MONUMENT RECORD**

Note: This form is intended and designed to fulfill all requirements of the Wisconsin Administrative Code, Chapter A-E 7.08 U.S. Public Land Monument Record (3)(a)(b)(c)(d)(e)(f)(g)(h)(i). An additional sheet may be added if necessary to conform with said requirements.

(a) CORNER LOCATION:

W 1/4 Corner of Section 14  
Township 39 North  
Range 4 East  
Town of Minocqua  
County of Oneida

ONEIDA COUNTY  
GRID COORDINATES  
North: 249007.15  
East: 123455.67  
Control Station: Vilas County 310S  
Latitude: 45-55-08.39995  
Longitude: 89-59-22.41041  
Datum: NAD 83 (1991) Method: RTK



SECTION 14

(b) HISTORY OF ORIGINAL CORNER ESTABLISHMENT

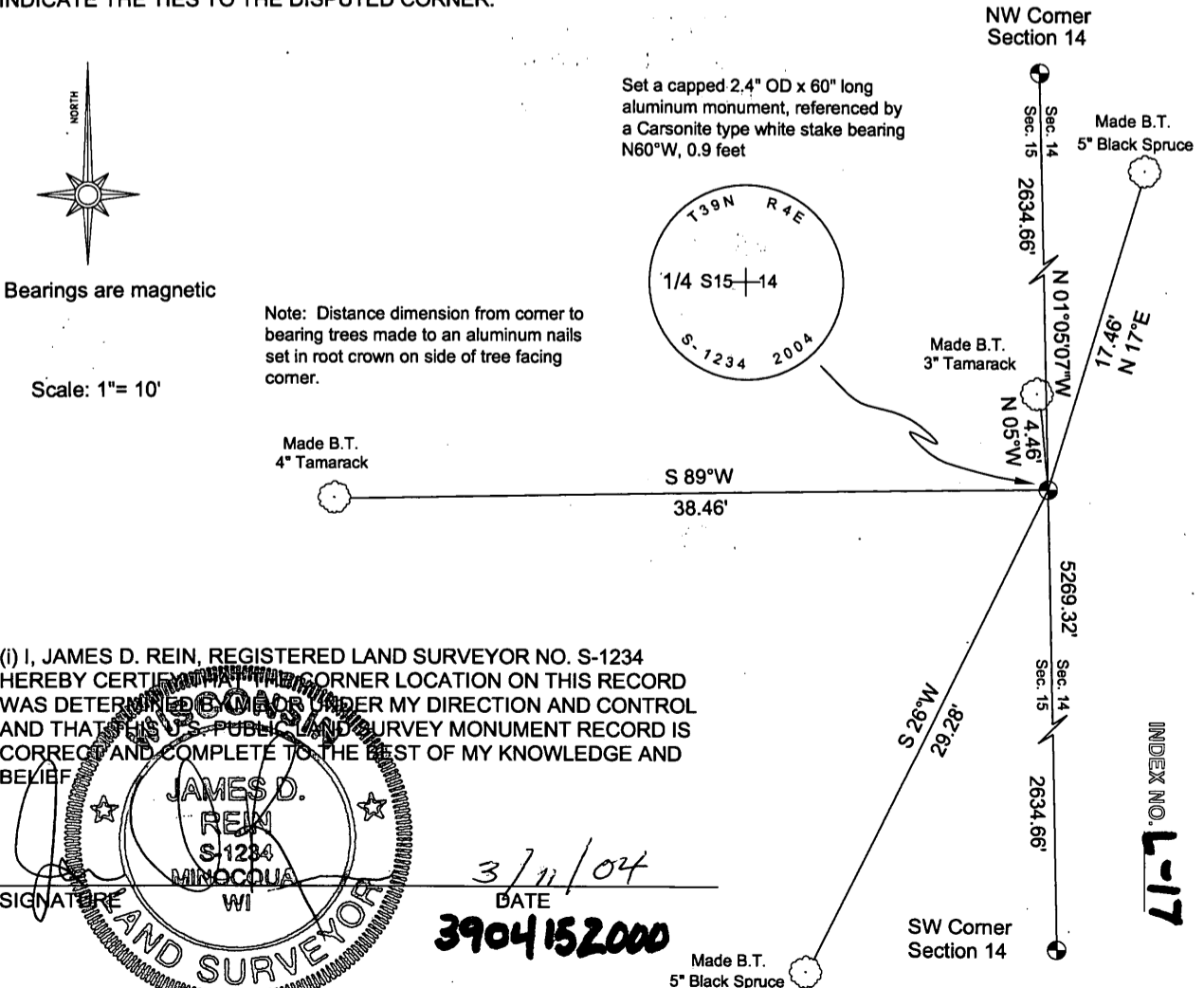
Original Surveyor: Alex Anderson  
Date of Survey: Commenced May 9, 1865  
Completed May 22, 1865

Original B.T.'S: 6" Tamarac, N78°W, 6 links  
4" Tamarac, N77°E, 4 links

(f)(g)(h) DESCRIPTION OF MONUMENT FOUND AT THIS CORNER AND IF IT WAS ACCEPTED, STATE ALL EVIDENCE (MATERIAL, TESTIMONIAL, OCCUPATIONS, PLATS, RECORDS, OTHER MONUMENTS) USED AS A BASIS FOR ESTABLISHING LOCATION. IF NOT ACCEPTED IF NOTHING WAS FOUND, STATE EVIDENCE USED AS BASIS FOR ESTABLISHING LOCATION. IF REESTABLISHED THROUGH LOST CORNER PROPORTIONATE METHODS, INDICATE ALL MONUMENTS, DISTANCES AND DIRECTIONS USED TO ESTABLISH. INDICATE TYPE OF MONUMENT AND SIGN POST FOUND OR SET.

February 18, 2004: James D. Rein, RLS No. 1234, searched, but found no evidence of the original quarter corner common to Sections 14 and 15. Thus I re-establish by single proportionate position between the northwest and southwest corner of Section 14 with a capped 2.4" OD x 60" long Oneida County aluminum monument extending 1 foot above ground. Set a Carsonite type stake N60°W, 0.9 feet. Made bearing trees as shown below in the plan.

(c)(d)(e) PLAN VIEW OF CORNER WITH TIES TO AT LEAST 4 WITNESS MONUMENTS. IF IN DISAGREEMENT WITH PREVIOUSLY ESTABLISHED CORNER, SHOW THE DISTANCE BETWEEN THE TWO CORNERS AND ALSO INDICATE THE TIES TO THE DISPUTED CORNER.



(i) I, JAMES D. REIN, REGISTERED LAND SURVEYOR NO. S-1234 HEREBY CERTIFY THAT THE CORNER LOCATION ON THIS RECORD WAS DETERMINED AND LOCATED UNDER MY DIRECTION AND CONTROL AND THAT THIS U.S. PUBLIC LAND SURVEY MONUMENT RECORD IS CORRECT AND COMPLETE TO THE BEST OF MY KNOWLEDGE AND BELIEF.

**JAMES D. REIN**  
S-1234  
MINOCQUA  
WI  
LAND SURVEYOR

3/11/04  
DATE  
3904152000

INDEX NO. 1-17