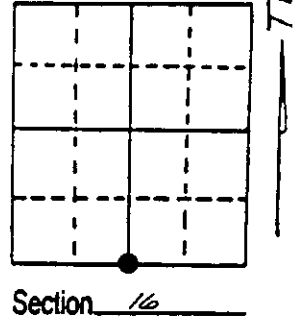


U.S. PUBLIC LAND SURVEY MONUMENT RECORD

Note: This form is intended and designed to fulfill all requirements of Wisconsin Administrative Code, Chapter A-E 7.08 U.S. Public Land Survey Monument Record (3) (a) (b) (c) (d) (e) (f) (g) (h) (i). An additional sheet may be added if necessary to conform with said requirements.

(a) Corner location: Township 39 North
 Range 4 East/West

Town/City/Village Minocqua
 County Oneida



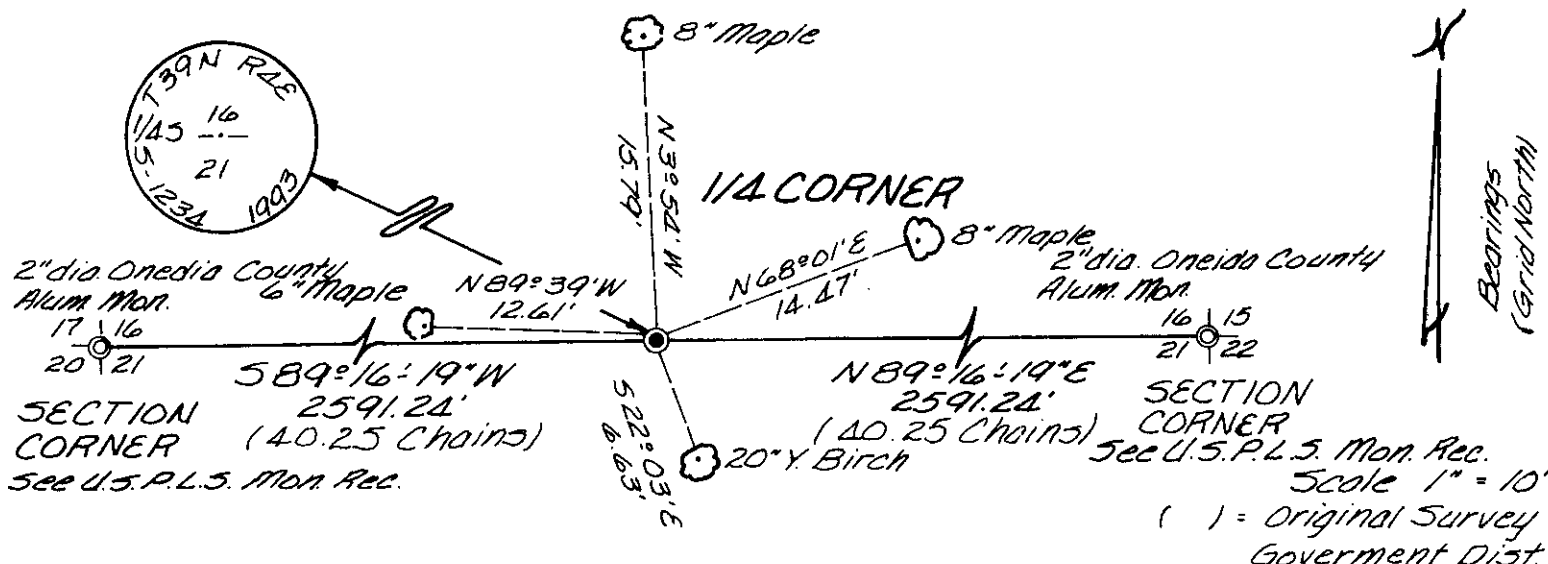
(b) (f) (g) (h) Description of monument found at this corner and if it was accepted, state all evidence (material, testimonial, occupational, plats, records, other monuments) used as a basis for accepting. If not accepted or if nothing was found, state evidence used as basis for establishing location. If reestablished through lost corner proportionate methods, indicate all monuments, distances and directions used to establish. Indicate type of monument found or set and sign post.

May, 1865 - Alex Anderson, Deputy Surveyor, set 1/4 section post, no bearing trees.

December, 1957 - William Stuth and Ken Voyt, surveying for NEPCO, notes for a staff compass and chain survey show a measurement of 78.75 chains between section corners.

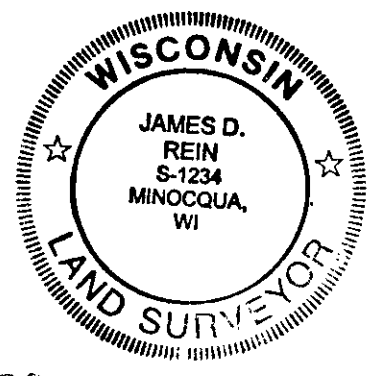
March 17, 1993 - James D. Rein, R.L.S. No. 1234, we are unable to recover any original or subsequent evidence for the original location of this corner. I thus re-establish by single proportionate measurement between the recovered section corners as shown on the plan view. We set a capped 2" dia. x 30" long flange bottom aluminum monument at the corner position and make bearing tree ties to aluminum nails set in the sides of the trees as shown in the plan. We also place a plastic marker stake 1 foot west of the corner monument.

(c) (d) (e) Plan view of corner with ties to at least 4 witness monuments. If in disagreement with previously established corner, show the distances between the two corners and also indicate the ties to the disputed corner.



(i) I, James D. Rein, Registered Land Surveyor No. 1234
 (type or print name) certify that the corner location on this record was determined by me or under my direction and control and that this U.S. Public Land Survey Monument Record is correct and complete to the best of my knowledge and belief.

James D. Rein Signature
 March 17, 1993 Date



390416 0020
 Stamp

Index No. N-11