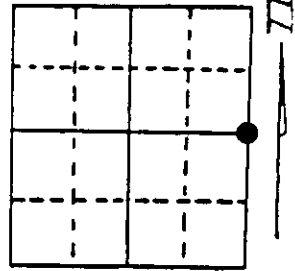


U.S. PUBLIC LAND SURVEY MONUMENT RECORD

Note: This form is intended and designed to fulfill all requirements of Wisconsin Administrative Code, Chapter A-E 7.08 U.S. Public Land Survey Monument Record (3) (a) (b) (c) (d) (e) (f) (g) (h) (i). An additional sheet may be added if necessary to conform with said requirements.

(a) Corner location: Township 39 North
 Range 4 East West



Town/City/Village XXXXXXXXXX of Minocqua
 County of Oneida

Section 16

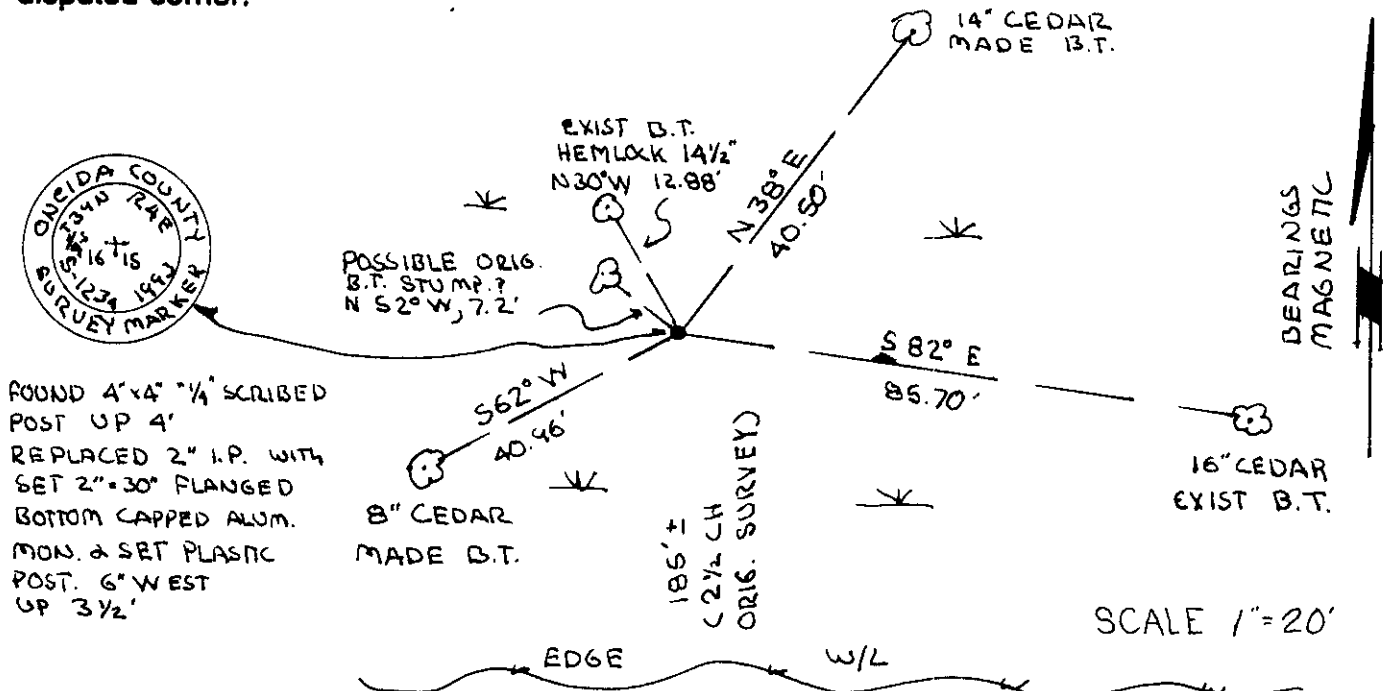
(b) (f) (g) (h) Description of monument found at this corner and if it was accepted, state all evidence (material, testimonial, occupational, plats, records, other monuments) used as a basis for accepting. If not accepted or if nothing was found, state evidence used as basis for establishing location. If reestablished through lost corner proportionate methods, indicate all monuments, distances and directions used to establish. Indicate type of monument found or set and sign post.

May, 1865 - Alex Anderson, Deputy Surveyor, set 1/4 post, referenced by the following bearing trees: Hemlock 10" N25°W, 10 links; and by a Hemlock 10" S67°E, 14 links.

December 8 & 14, 1960 - John H. Fisher, field notes by Northwoods Surveyors. identify a recovered scribed wood post, showing V. Steffek's mark. Set 2" dia. iron pipe and made new bearing trees: 9" Cedar N8°15"E, 63.2 feet and set a R.R. spike in a scribed 12" Cedar S82°E, 85.4 feet.

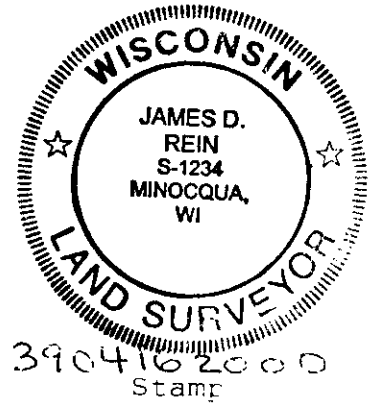
March, 1993 - James D. Rein, R.L.S. No. 1234, recovered a 2" dia. iron pipe and old wood post referenced by Fisher's southeast bearing tree. I accept the iron pipe as being the best evidence of the original location and replace it with a capped 2" dia. x 30" long flange bottom aluminum monument. Set a plastic marker post 1/2 foot west of the corner and made additional bearing trees as shown in plan. Distance measurements to bearing trees were made to aluminum nails set in the sides of the bearing trees.

(c) (d) (e) Plan view of corner with ties to at least 4 witness monuments. If in disagreement with previously established corner, show the distances between the two corners and also indicate the ties to the disputed corner.



(i) I, James D. Rein, Registered Land Surveyor No. 1234
 (type or print name) certify that the corner location on this record was determined by me or under my direction and control and that this U.S. Public Land Survey Monument Record is correct and complete to the best of my knowledge and belief.

[Signature] MARCH 17, 1993
 Signature Date



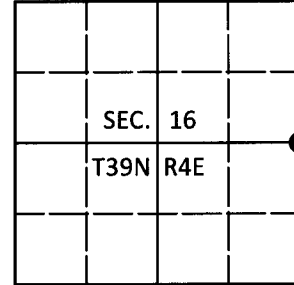
Index No. 4 - 13

U.S. PUBLIC LAND SURVEY MONUMENT RECORD

Note: This form is intended and designed to fulfill all requirements of Wisconsin Administrative Code, Chapter A-E 7.08 U.S. Public Land Survey Monument Record (3)(a-i).

(a) CORNER LOCATION
 1/4 Cor. of Secs. 15 & 16
 Township 39 North
 Range 4 East of the 4th P.M.
 Town of Minocqua
 County of Oneida

WISCORS - Oneida County
 N: 249,040.40 USft
 E: 118,175.52 USft
 Datum: NAD 83(2011)
 GNSS Method: RTN - Direct
 GNSS Control: WISCORS VRS



(b) HISTORY OF ORIGINAL CORNER ESTABLISHMENT

Original Surveyor: _____ Original Accessories: _____
 Date of Survey Commenced: _____ See previous USPLS Monument Record
 Completed: _____

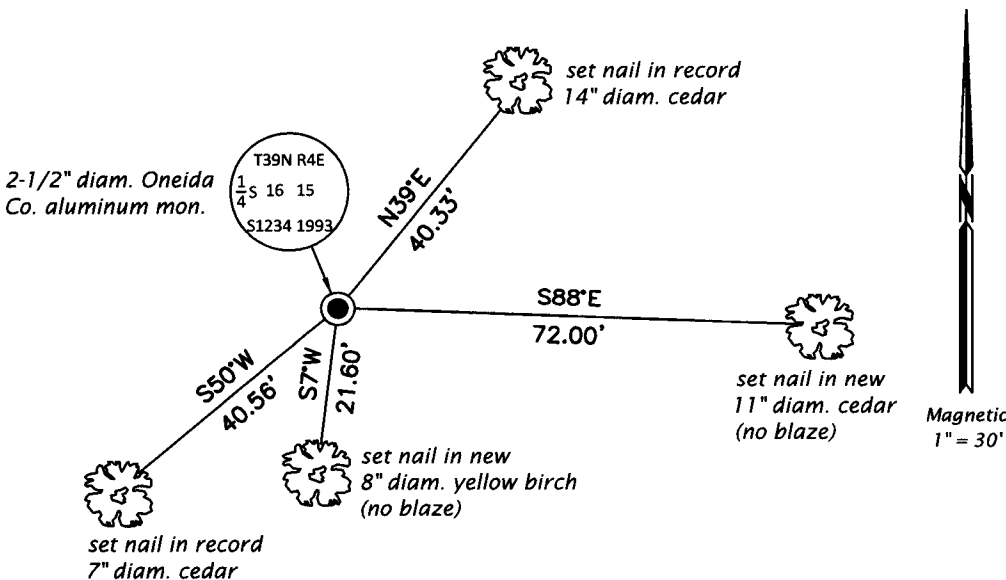
(b)(f)(g)(h) Description of monument found at this corner and if it was accepted, state all evidence (material, testimonial, occupational, plats, records, other monuments) used as a basis for accepting. If not accepted or if nothing was found, state evidence used as basis for establishing location. If re-established through lost corner proportionate methods, indicate all monuments, distances and directions used to establish. Indicate type of monument and sign post found or set.

This is a perpetuation of a previous USPLS Monument Record by James D. Rein, RLS dated March 17, 1993 and filed in the office of the Oneida County Register of Deeds. A complete history of the corner can be found on the previous monument record. I accept the previous location as a true and faithful perpetuation or reestablishment of the original corner location and further perpetuate it as follows.

April 19, 2018: I found and accepted the record monument, a 2-1/2" diam. aluminum pipe with a 3-1/4" diam. Oneida Co. aluminum cap projecting 10" above the ground surface. The record bearing tree at 85.70' is down. The record hemlock bearing tree is standing dead. I found or established accessories as shown below. I found a white vinyl sign post bearing North, 0.5 ft.

The coordinate value shown has been verified by at least one of the following methods: 1) comparison to a previously GPS determined published value; 2) the value is the average of two or more GPS observations at a markedly different time; 3) one or more distances were measured back to the GPS observed corner from temporary GPS observed offset locations.

(c)(d)(e) Plan view of corner with ties to at least 4 witness monuments. If in disagreement with previously established corner, show the distances between the two corners and also indicate the ties to the disputed.



REGISTER OF DEEDS OFFICE
 ONEIDA COUNTY
 FILED

MAY 01 2018

KYLE J. FRANSON
 REGISTER OF DEEDS

(i) I, Jeffrey W. Austin, Professional Land Surveyor No. S-1885, hereby certify that the corner location on this record was determined by me or under my direction and control and that this U.S. Public Land Survey Monument Record is correct and complete to the best of my knowledge and belief.

 Signature Date APR. 23, 2018