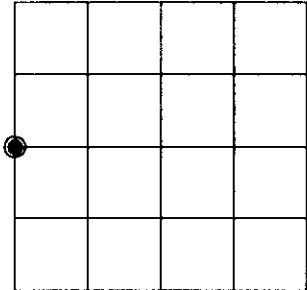


# U.S. PUBLIC LAND SURVEY MONUMENT RECORD

Note: This form is intended and designed to fulfill all requirements of Wisconsin Administrative Code, Chapter A-E 7.08 U.S. Public Land Survey Monument Record (3)(a)(b)(c)(d)(e)(f)(g)(h)(i). An additional sheet may be added if necessary to conform with said requirements.

**(a) CORNER LOCATION:**

West 1/4 corner of Sec. 16 State Plane Coordinates  
 Township 39 North X \_\_\_\_\_  
 Range 4 East Y \_\_\_\_\_  
 Town/City/Village Minocqua Datum Base \_\_\_\_\_  
 County of Oneida



**(b) HISTORY OF ORIGINAL CORNER ESTABLISHMENT**

Original Surveyor: Alex Anderson Original B.T.'S SECTION 16  
 Date of Survey: Commenced May 9th, 1865 Hemlock 10" N37°E, 8 links  
 Completed May 22nd, 1865 Hemlock 8" S70°W, 16 links

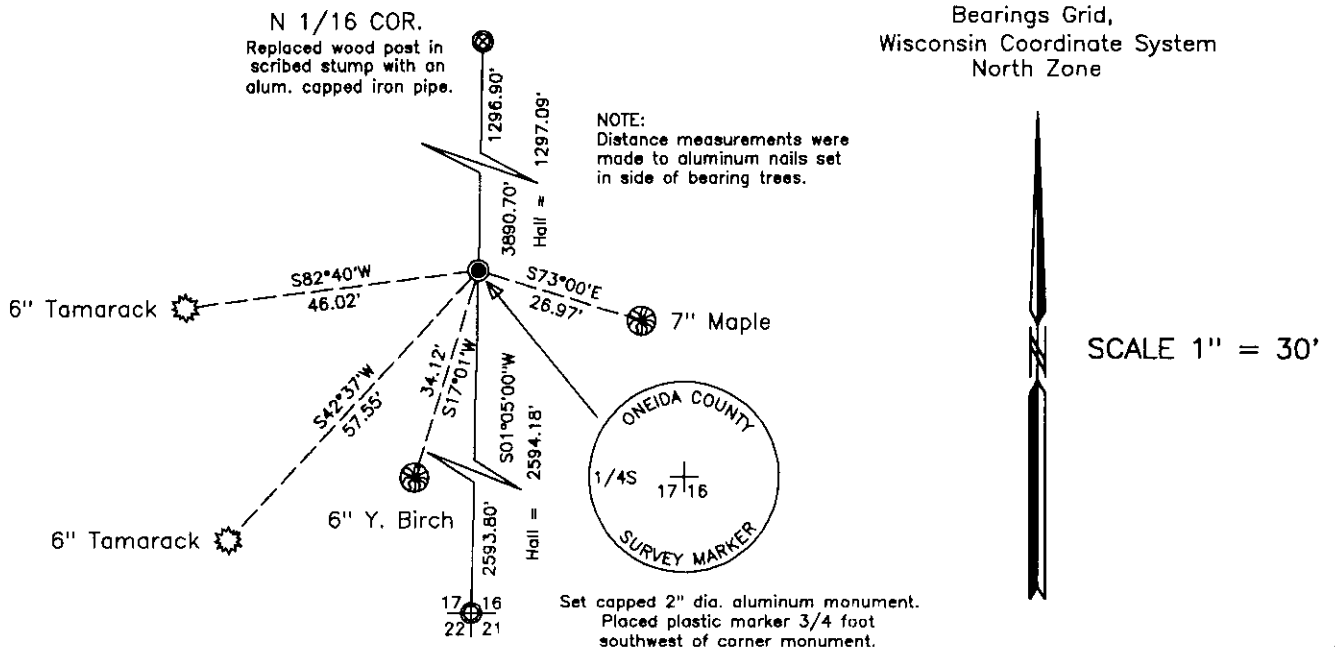
**(f)(g)(h) Description of monument found at this corner and if it was accepted, state all evidence (material, testimonial, occupational, plats, records, other monuments) used as a basis for establishing location. If not accepted or if nothing was found, state evidence used as basis for establishing location. If reestablished through lost corner proportionate methods, indicate all monuments, distances and directions used to establish. Indicate type of monument and sign post found or set.**

October 29, 1930 to January 2, 1931 – Harry C. Hall, Oneida County Surveyor, fails to identify evidence for Orig. M.C.s # 27 & 28 and the 1/4S between Sections 16 & 17, for a survey in Section 9. He re-established corner to Sections 8, 9, 16 and 17, in lake, by double proportionate measurement.

March 26, 1932 – Harry C. Hall, Oneida County Surveyor, pick up points from earlier survey and set 1/8 S. at calc. dist. (falls in 16" pine stump); W. Pine stump 28" West .45 chains; Swamp West .70 chains, more or less.

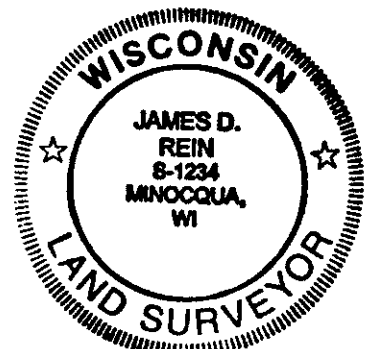
March, 1993 – James D. Rein, R.L.S. No. 1234, search but am unable to find any evidence of the corner monument. We do recover evidence of Hall's 1/8 S. (N 1/16 Corner). Thus, I prorate the lost 1/4 corner, at Hall's record distance, and on line between the N 1/16 Corner and the corner common to Sections 16, 17, 21 and 22. We monument the corner with a capped 2" dia. x 30" long flange bottom aluminum monument. We also set a plastic marker 3/4 foot southwest of corner monument and made bearing tree ties as shown in plan view.

**(c)(d)(e) Plan view of corner with ties to at least 4 witness monuments. If in disagreement with previously established corner, show the distance between the two corners and also indicate the ties to the disputed corner.**



(i) I, James D. Rein, Registered Land Surveyor No. 1234, hereby certify that the corner location on this record was determined by me or under my direction and control and that this U.S. Public Land Survey Monument Record is correct and complete to the best of my knowledge and belief.

James D. Rein Signature  
 March 17, 1993 Date



INDEX NO. L-9

3904172000

# U.S. PUBLIC LAND SURVEY MONUMENT RECORD

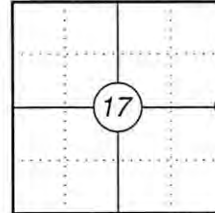
This form is intended and designed to fulfill all requirements of Wisconsin Administrative Code, Chapter A-E 7.08 U.S. Public Land Survey Monument Record (3) (a)(b)(c)(d)(e)(f)(g)(h)(i). An additional sheet may be added if necessary to confirm with said requirements.

Oneida County  
Land Information Office  
Filed  
4/13/2026

**(a) Corner Location:**

E 1/4 Corner Section 17  
Township 39 North  
Range 4 East  
Town of Minocqua  
County of Oneida

Corner ID: 3904172000



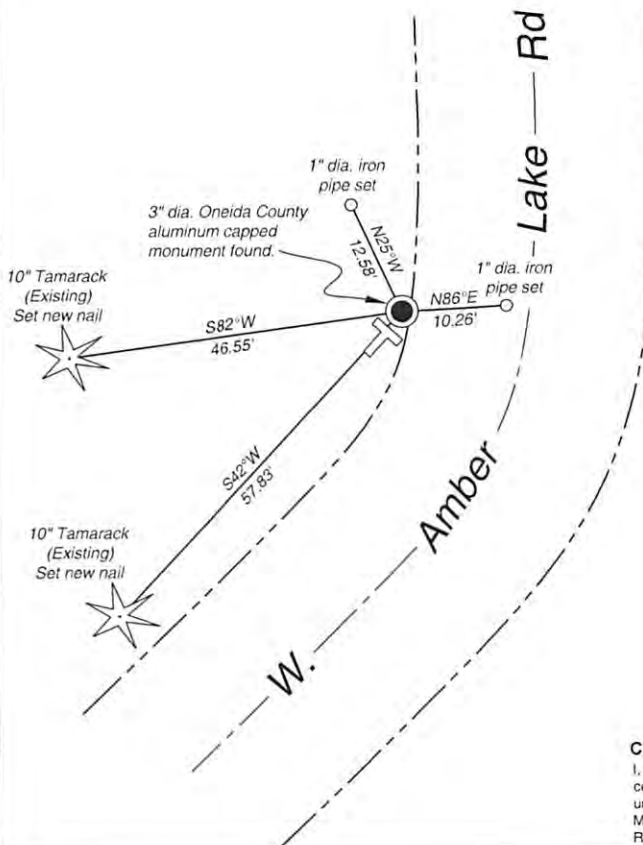
**(b) History of Original Corner:**

For corner history, see previous U.S. Public Land Survey Monument Record by James D. Rein, dated March 17, 1993.

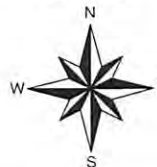
**(f)(g)(h) Description of monument found at this corner and if it was accepted, state all evidence (material, testimonial, occupational, plats, records, other monuments) used as a basis for establishing location. If reestablishing through lost corner proportionate methods, indicate all monuments, distances, and directions used to establish. Indicate type of monument and sign post found or set.**

08/26/2024 - I found a 3" dia. Oneida County aluminum capped monument stamped to identify the corner along with two existing bearing trees. I set new nails in the existing bearing trees and set two iron pipes as reference monuments to witness the corner as shown below.

**(c)(d)(e) Plan view of corner with ties to at least four witnesses. If in disagreement with previously established corner, show the distances between the two corners and also indicate the tie to the disputed corner.**



Magnetic Bearings  
Not to scale



- Vinyl "T" post 0.7' southwest of corner.
- Distances to bearing trees are to nail in side.



**Certification**

I, Gregory S. Maines, Professional Land Surveyor No. 2729, hereby certify that the corner location on this record was referenced by me or under my direction and control and that this U.S. Public Land Survey Monument Record is complete to the best of my knowledge and belief.  
REF: 2024231

Index No. :