

U.S. PUBLIC LAND SURVEY MONUMENT RECORD

Note: This form is intended and designed to fulfill all requirements of Wisconsin Administrative Code, Chapter A-E 7.08 U.S. Public Land Survey Monument Record (3)(a)(b)(c)(d)(e)(f)(g)(h)(i). An additional sheet may be added if necessary to conform with said requirements.

(a) CORNER LOCATION: * west line
 Meander corner* of Sec. 16
 Township 39 North
 Range 4 East
 Town/~~XXXXXX~~ Range Minocqua
 County of _____

State Plane Coordinates
 X _____
 Y _____
 Datum Base _____

M.C.				

(b) HISTORY OF ORIGINAL CORNER ESTABLISHMENT

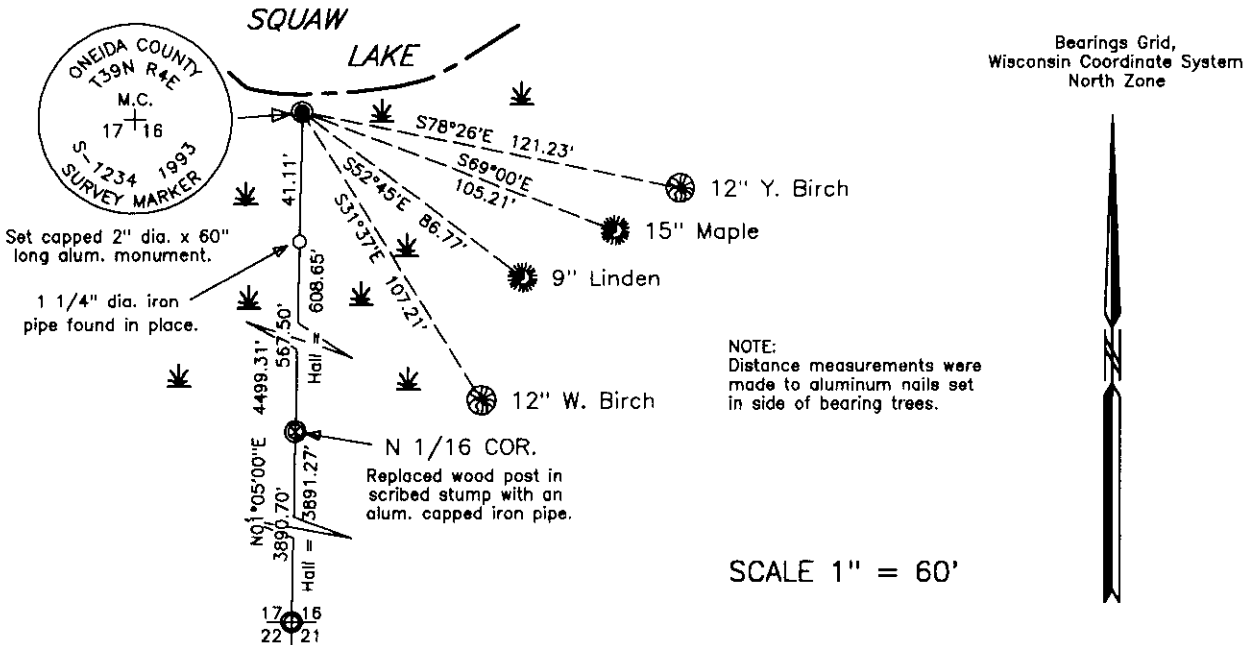
Original Surveyor: Oneida Original B.T.'S SECTION 16
 Date of Survey: Commenced May 9th, 1865 Aspen 8" S15°E, 19 links
 Completed May 22nd, 1865 Fir 6" S80°W, 10 links

(f)(g)(h) Description of monument found at this corner and if it was accepted, state all evidence (material, testimonial, occupational, plats, records, other monuments) used as a basis for establishing location. If not accepted or if nothing was found, state evidence used as basis for establishing location. If reestablished through lost corner proportionate methods, indicate all monuments, distances and directions used to establish. Indicate type of monument and sign post found or set.
 October 29, 1930 to January 2, 1931 - Harry C. Hall, Oneida County Surveyor, fails to identify evidence for Orig. M.C.s # 27 & 28 and the 1/4S between Sections 16 & 17, for a survey in Section 9. He re-established corner to Sections 8, 9, 16 and 17, in lake, by double proportionate measurement.

March 26, 1932 - Harry C. Hall, Oneida County Surveyor, pick up points from earlier survey and at 10.43 chains south of computed section corner, at swampy shore, drove post for meander corner, referenced by a Cedar stump 12" S57°E, .855 ch., no other near. At 19.652 ch. south, set 1/8 S. at calc. dist. (falls in 16" pine stump); W. Pine stump 28" West .415 chains.

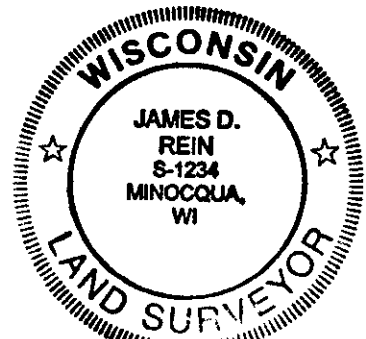
March, 1993 - James D. Rein, R.L.S. No. 1234, search but am unable to find any evidence of either the original, or Hall's meander corner. We do recover evidence of Hall's 1/8 S. (N 1/16 Corner) and the corner to Sections 16, 17, 21 and 22. Thus, I compute Hall's index measurement error between the N 1/16 Corner and the section corner. We monument the corner with a capped 2" dia. x 60" long piston type aluminum monument. We also set a plastic marker stake 2 feet East of corner monument and made bearing tree ties as shown in plan view. Corner is located at margin of open lake in wetland.

(c)(d)(e) Plan view of corner with ties to at least 4 witness monuments. If in disagreement with previously established corner, show the distance between the two corners and also indicate the ties to the disputed corner.



(i) I, James D. Rein, Registered Land Surveyor No. 1234, hereby certify that the corner location on this record was determined by me or under my direction and control and that this U.S. Public Land Survey Monument Record is correct and complete to the best of my knowledge and belief.

James D. Rein March 17, 1993
 Signature Date



INDEX NO. JK-9

3904173600