

FILED
APR 28 2008

At _____ O'Clock _____ M

U.S. PUBLIC LAND SURVEY MONUMENT RECORD

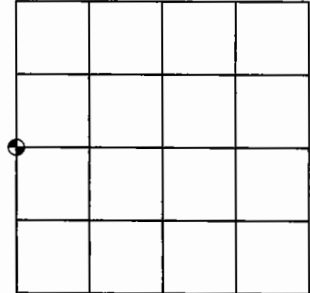
Note: This form is intended and designed to fulfill all requirements of the Wisconsin Administrative Code, Chapter A-E 7.08 U.S. Public Land Monument Record (3)(a)(b)(c)(d)(e)(f)(g)(h)(i). An additional sheet may be added if necessary to conform with said requirements.

(a) CORNER LOCATION:

West quarter corner of Section 17
Township 39 North
Range 4 East
Town of Minocqua
County of Oneida

COORDINATES

North: 249053.6332
East: 108019.2737
Control Station: O.C. #296
Latitude: 45°53'30.17969"N
Longitude: 90°01'58.94238"W
Datum: NAD 83 (1991) Method: RTK
offset control staking



SECTION 17

(b) HISTORY OF ORIGINAL CORNER ESTABLISHMENT

Original Surveyor: Alexander Anderson
Date of Survey: Commenced - May 9th, 1865
Completed - May 22nd, 1865

Original B.T.'S: Hemlock 8" N19°W 16 links
Hemlock 10" N75°E 30 links

(f)(g)(h) DESCRIPTION OF MONUMENT FOUND AT THIS CORNER AND IF IT WAS ACCEPTED, STATE ALL EVIDENCE (MATERIAL, TESTIMONIAL, OCCUPATIONAL, PLATS, RECORDS, OTHER MONUMENTS) USED AS A BASIS FOR ESTABLISHING LOCATION. IF NOT ACCEPTED OF IF NOTHING WAS FOUND, STATE EVIDENCE USED AS BASIS FOR ESTABLISHING LOCATION. IF REESTABLISHED THROUGH LOST CORNER PROPORTIONATE METHODS, INDICATE ALL MONUMENTS, DISTANCES AND DIRECTIONS USED TO ESTABLISH. INDICATE TYPE OF MONUMENT AND SIGN POST FOUND OR SET.

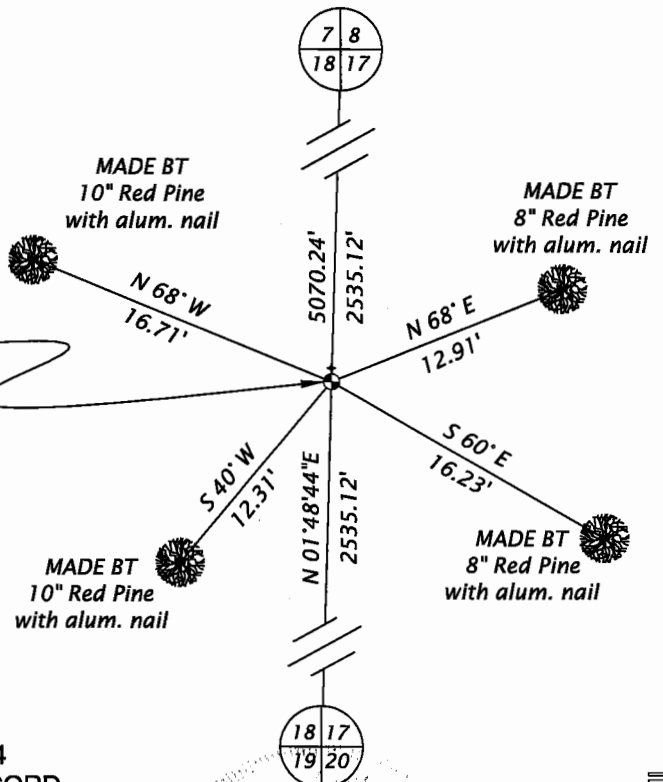
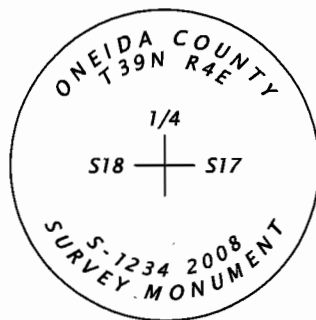
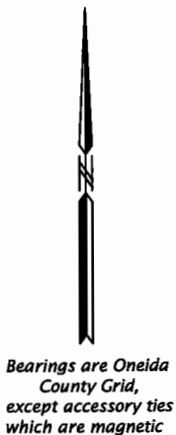
March 1963 - Map prepared by W.H. Stuth on February 16th, 1989 (Filed in NEPCO Book No. 2 Page No. 200 at the Oneida County Land Records office) indicates a Scribed Post.

March 10, 2008 - James D. Rein, RLS No. 1234, having conducted search for original evidence of corner and having found none, I monument the corner position by single proportionate measurement between the corner to Sec. 7-8-18-17 and the corner to Sec. 18-17-19-20. Monument and accessories as shown in plan.

(c)(d)(e) PLAN VIEW OF CORNER WITH TIES TO AT LEAST 4 WITNESS MONUMENTS. IF IN DISAGREEMENT WITH PREVIOUSLY ESTABLISHED CORNER, SHOW THE DISTANCE BETWEEN THE TWO CORNERS AND ALSO INDICATE THE TIES TO THE DISPUTED CORNER.

SET
capped 2.4" dia. x 30" long
aluminum monument
Set white carsonite post
0.5' North of monument.

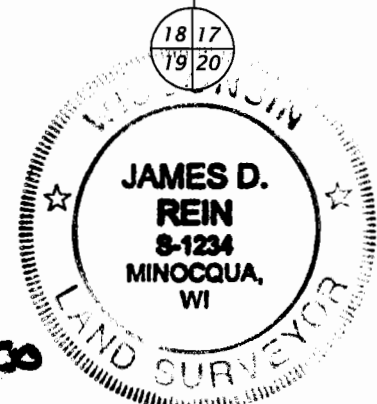
Scale 1" = 10'



(i) I, JAMES D. REIN, REGISTERED LAND SURVEYOR NO. S-1234 HEREBY CERTIFY THAT THE CORNER LOCATION ON THIS RECORD WAS DETERMINED BY ME OR UNDER MY DIRECTION AND CONTROL AND THAT THIS U.S. PUBLIC LAND SURVEY MONUMENT RECORD IS CORRECT AND COMPLETE TO THE BEST OF MY KNOWLEDGE AND BELIEF.

[Handwritten Signature]
SIGNATURE

4/17/08
DATE 3904182000



INDEX NO. L-5