

U.S. PUBLIC LAND SURVEY MONUMENT RECORD

Note: This form is intended and designed to fulfill all requirements of the Wisconsin Administrative Code, Chapter A-E 7.08 U.S. Public Land Monument Record (3)(a)(b)(c)(d)(e)(f)(g)(h)(i). An additional sheet may be added if necessary to conform with said requirements.

REGISTER OF DEEDS OFFICE
ONEIDA COUNTY
WISCONSIN

MAY 25 2017

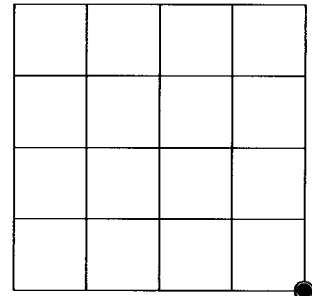
(a) CORNER LOCATION: WISCRS - Oneida County
 Southeast Corner of Section 21
 Township 39 North
 Range 4 East
 Town of Minocqua
 County of Oneida

North: 241157.662 USft
 East: 118043.605 USft
 Latitude: 45° 50' 47.68077" N
 Longitude: 89° 59' 01.41240" W
 Datum: NAD 83(2011)
 GNSS Method: RTK - Offset
 GNSS Control: WISCRS VRS
 Record North: USft
 Record East: USft
 Record Datum: NAD 83(1991)

AT _____ O'CLOCK
 KYLE J. FRANSON
 REGISTER OF DEEDS

(RECORDING AREA)

SECTION 21



(b) HISTORY OF ORIGINAL CORNER ESTABLISHMENT

Original Surveyor: Alex Anderson
 Date of Survey: Commenced May 9th, 1865
 Completed May 22nd, 1865
 Original B.T.'S: Birch 12" S 15°W, 14 lks.
 Fir 10" N 53°E 30 lks.

(f)(g)(h) DESCRIPTION OF MONUMENT FOUND AT THIS CORNER AND IF IT WAS ACCEPTED, STATE ALL EVIDENCE (MATERIAL, TESTIMONIAL, OCCUPATIONAL, PLATS, RECORD, OTHER MONUMENTS) USED AS A BASIS FOR ESTABLISHING LOCATION. IF NOT ACCEPTED OR IF NOTHING WAS FOUND, STATE EVIDENCE USED AS BASIS FOR ESTABLISHING LOCATION. IF REESTABLISHED THROUGH LOST CORNER PROPORTIONATE METHODS, INDICATE ALL MONUMENTS, DISTANCES AND DIRECTIONS USED TO ESTABLISH. INDICATE TYPE OF MONUMENT AND SIGN POST FOUND OR SET.

1960's? - B. Stuth and K. Voyt, NEPCO surveyors, map filed in NEPCO Book 2, pages 222 and 223, describes corner monumented by "IRON PIPE-BRASS CAP ALSO SQ. SCRIBED CEDAR POST 36" ABOVE GROUND.

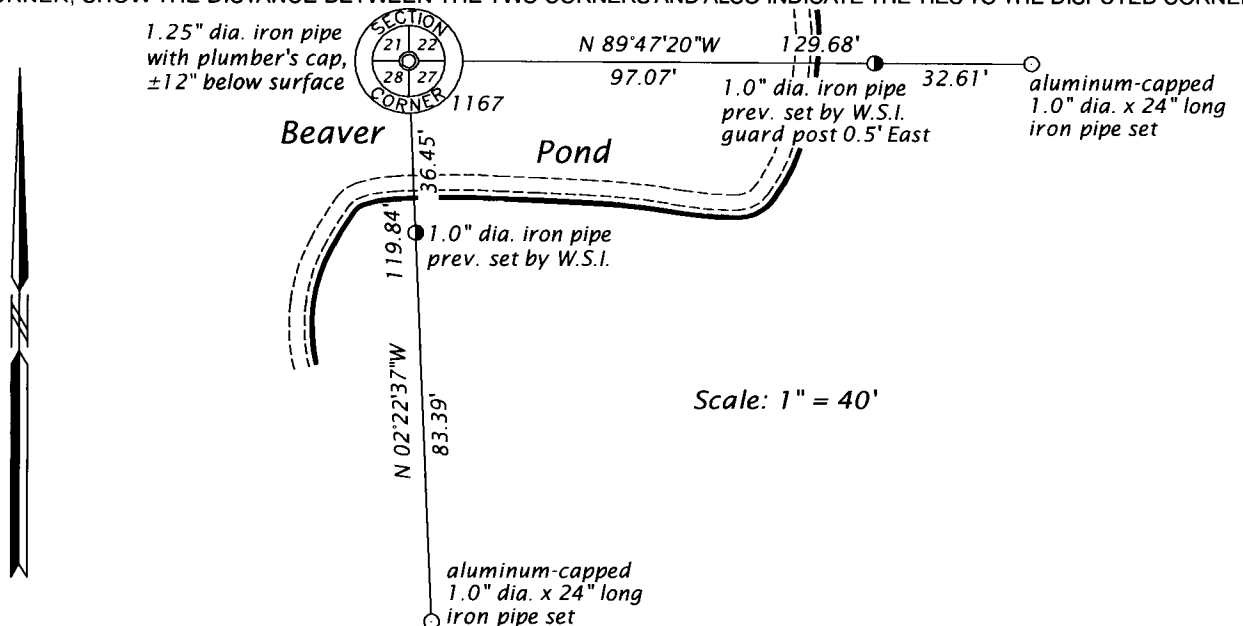
April 22, 1987 - U.S. Public Land Survey Monument Record by Dennis B. Roberts, RLS No. 1863, JOHN H. FISHER & Assoc., recovered a 1 1/2" iron pipe with stamped brass cap and square scribed wood post in bog swamp, which he referenced with BT's and a gate post.

June 12, 2003 - James L. Rein, RLS No. 2335, Wilderness Surveying, Inc., Map No. 03-39, filed in county surveyor's office as C1993, re-established corner position based on surveyor Roberts traverse control nails to position iron pipes on the section lines.

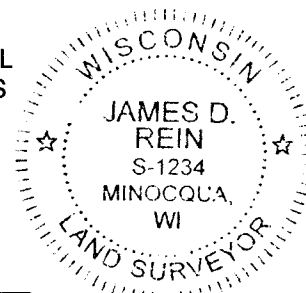
May 3, 2017, James D. Rein, PLS No. 1234, we recovered a 1.5" dia. iron pipe a plumbers in 3 feet high water beaver flowage, top of monument is 12" below present water surface. I accept the existing monument as the best available evidence of the position of the original corner. Because of the present limited access to the corner we established additional new reference monuments as shown in plan.

The coordinate value shown has been verified by at least one of the following methods: 1) comparison to a previously GPS determined published value; 2) the value is the average of two or more GPS observations at a markedly different time; 3) one or more distances were measured back to the GPS observed corner from temporary GPS observed offset locations.

(c)(d)(e) PLAN VIEW OF CORNER WITH TIES TO AT LEAST 4 WITNESS MONUMENTS. IF IN DISAGREEMENT WITH PREVIOUSLY ESTABLISHED CORNER, SHOW THE DISTANCE BETWEEN THE TWO CORNERS AND ALSO INDICATE THE TIES TO THE DISPUTED CORNER.



(i) I, JAMES D. REIN, PROFESSIONAL LAND SURVEYOR NO. S-1234 HEREBY CERTIFY THAT THE CORNER LOCATION ON THIS RECORD WAS DETERMINED BY ME OR UNDER MY DIRECTION AND CONTROL AND THAT THIS U.S. PUBLIC LAND SURVEY MONUMENT RECORD IS CORRECT AND COMPLETE TO THE BEST OF MY KNOWLEDGE AND BELIEF.



[Handwritten Signature]
 SIGNATURE

5-15-17
 DATE

INDEX NO. R - 13
 3904210000