

At \_\_\_\_\_ O'Clock \_\_\_\_\_ M

U.S. PUBLIC LAND SURVEY MONUMENT RECORD

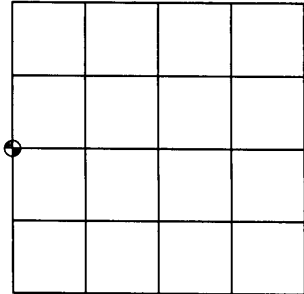
Note: This form is intended and designed to fulfill all requirements of the Wisconsin Administrative Code, Chapter A-E 7.08 U.S. Public Land Monument Record (3)(a)(b)(c)(d)(e)(f)(g)(h)(i). An additional sheet may be added if necessary to conform with said requirements.

(a) CORNER LOCATION:

West quarter corner of Section 23  
Township 39 North  
Range 4 East  
Town of Minocqua  
County of Oneida

COORDINATES

North: 243763.6973  
East: 123339.3647  
Control Station: 1281 (by Austin 5/8/08)  
Latitude: 45°50'55.32762" N  
Longitude: 89°58'26.85798" W  
Datum: NAD 83 (1991) Method: RTK



SECTION 23

(b) HISTORY OF ORIGINAL CORNER ESTABLISHMENT

Original Surveyor: Alexander Anderson  
Date of Survey: Commenced May 9th, 1865  
Completed May 22nd, 1865

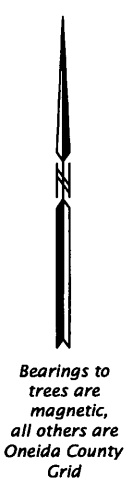
Original B.T.'S Hemlock 10" S55°E 4 links  
Sugar 12" S55°W 18 links

(f)(g)(h) DESCRIPTION OF MONUMENT FOUND AT THIS CORNER AND IF IT WAS ACCEPTED, STATE ALL EVIDENCE (MATERIAL, TESTIMONIAL, OCCUPATIONAL, PLATS, RECORDS, OTHER MONUMENTS) USED AS A BASIS FOR ESTABLISHING LOCATION. IF NOT ACCEPTED OF IF NOTHING WAS FOUND, STATE EVIDENCE USED AS BASIS FOR ESTABLISHING LOCATION. IF REESTABLISHED THROUGH LOST CORNER PROPORTIONATE METHODS, INDICATE ALL MONUMENTS, DISTANCES AND DIRECTIONS USED TO ESTABLISH. INDICATE TYPE OF MONUMENT AND SIGN POST FOUND OR SET.

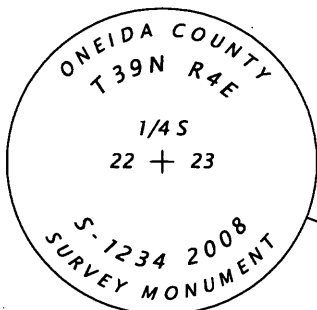
May 20th, 2008 - James D. Rein, RLS No. 1234, searched extensively for original evidence of the corner location and find none. I re-establish the corner using single proportionate measurement and set an Oneida County capped aluminum monument and accessories as shown in plan.

(c)(d)(e) PLAN VIEW OF CORNER WITH TIES TO AT LEAST 4 WITNESS MONUMENTS. IF IN DISAGREEMENT WITH PREVIOUSLY ESTABLISHED CORNER, SHOW THE DISTANCE BETWEEN THE TWO CORNERS AND ALSO INDICATE THE TIES TO THE DISPUTED CORNER.

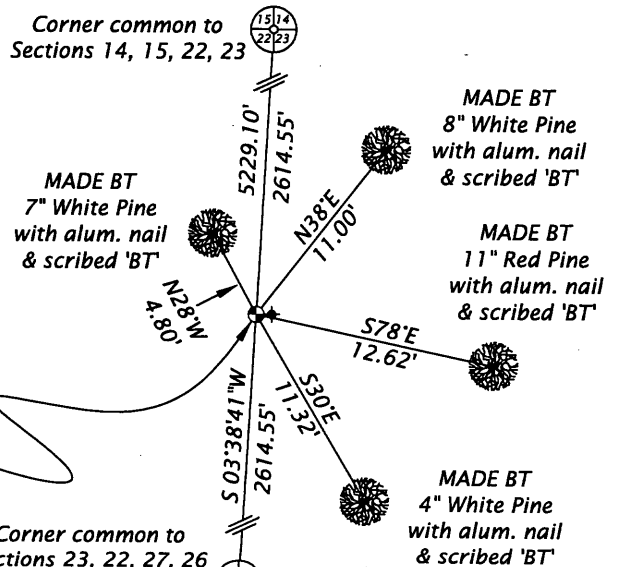
Scale 1" = 10'



SET  
2.4" dia. x 30" long capped aluminum monument extending 10" above the ground. Corner falls on side slope ± 60' NE of swamp. Set white plastic post 1.0' East of monument.



Corner common to Sections 14, 15, 22, 23



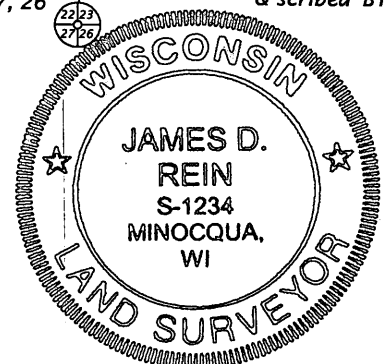
Corner common to Sections 23, 22, 27, 26

(i) I, JAMES D. REIN, REGISTERED LAND SURVEYOR NO. S-1234 HEREBY CERTIFY THAT THE CORNER LOCATION ON THIS RECORD WAS DETERMINED BY ME OR UNDER MY DIRECTION AND CONTROL AND THAT THIS U.S. PUBLIC LAND SURVEY MONUMENT RECORD IS CORRECT AND COMPLETE TO THE BEST OF MY KNOWLEDGE AND BELIEF.

SIGNATURE

6/03/08

DATE 3904222000



INDEX NO. P-17