

# U.S. PUBLIC LAND SURVEY MONUMENT RECORD

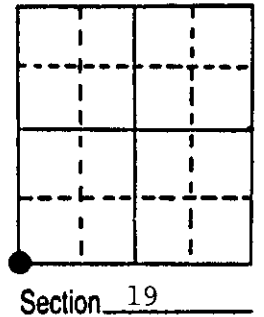
**Note:** This form is intended and designed to fulfill all requirements of Wisconsin Administrative Code, Chapter A-E 5.02, U.S. Public Land Survey Monument Record (3) (a) (b) (c) (d) (e) (f) (g) (h) (i). An additional sheet may be added if necessary to conform with said requirements.

(a) Corner location: Township 39 North

Range 5 East/West

Town/City/Village Minocqua

County Oneida

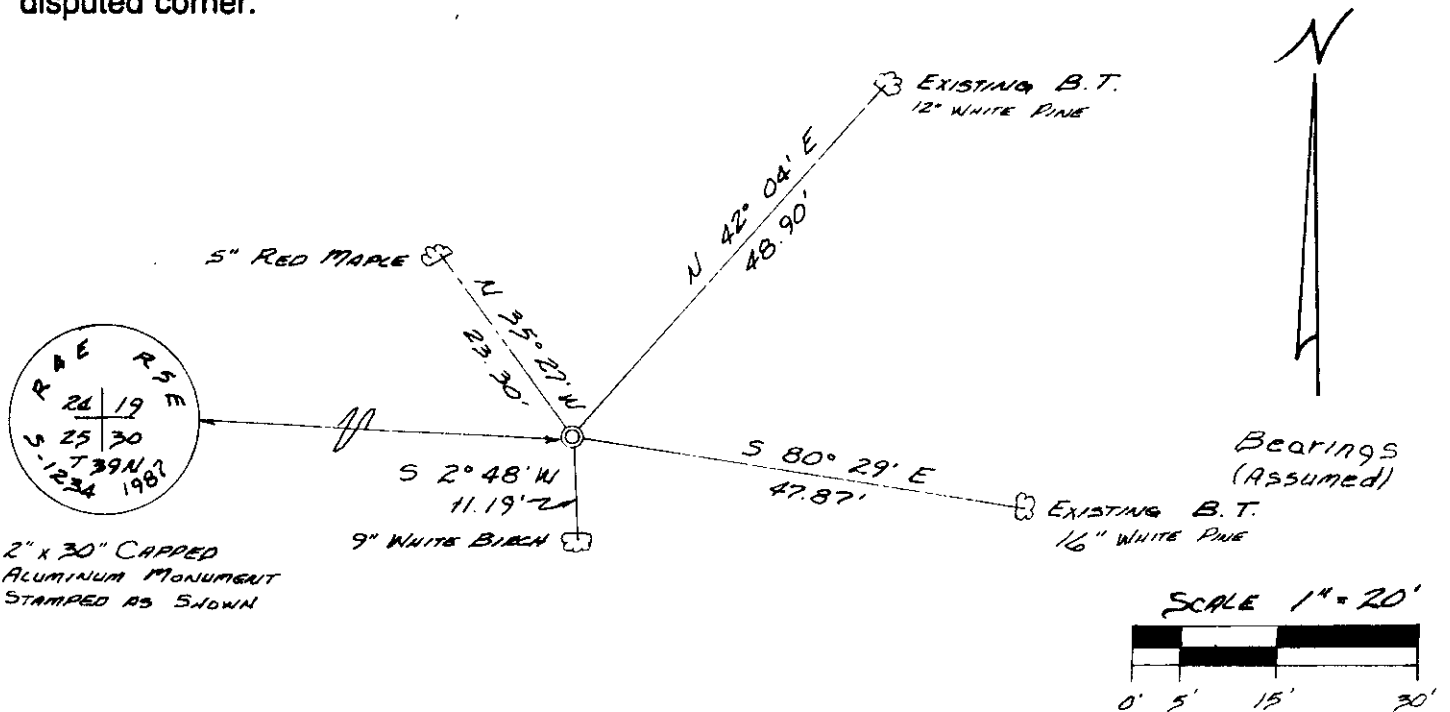


(b) (f) (g) (h) Description of monument found at this corner and if it was accepted, state all evidence (material, testimonial, occupational, plats, records, other monuments) used as a basis for accepting. If not accepted or if nothing was found, state evidence used as basis for establishing location. If reestablished through lost corner proportionate methods, indicate all monuments, distances and directions used to establish.

- September 1860 - Alfred Millard, Deputy Surveyor - Set post for corner. Original bearing trees: Aspen 12" N12°E, 12 links; Aspen 10" N20°W, 20 links; W. Birch 10" S45°E 26 lks W. Birch 10" S8°W, 7 links.
- 1890 - B. F. Dorr, Oneida County Surveyor - Found NW Corner Section 30.
- 1946 - E. F. Kowalke, Surveyor - Book 3, Page 53, retraced Dorr's survey in Section 30 for his survey in Section 19. Restored corner and made new B.T.'s: Norway 8" S27°E, 83.5 feet and a W. Pine 6" N38½°E, 48.8 feet.
- November 6th, 1987 - James D. Rein, RLS - Replaced a found 2" dia. iron pipe with a capped 2" dia. x 30" long flange bottom aluminum monument marked as shown in plan. Set plastic stake 1 foot southwest of corner monument.

Note: Made ties to aluminum nails set in center of root crown on side of tree facing corner as shown in plan.

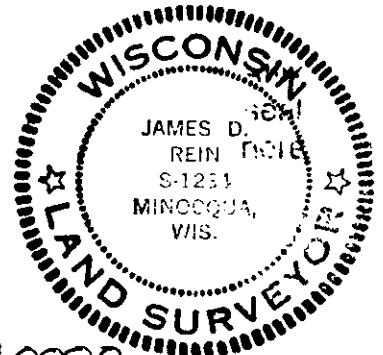
(c) (d) (e) Plan view of corner with ties to at least 4 witness monuments. If in disagreement with previously established corner, show the distances between the two corners and also indicate the ties to the disputed corner.



(i) I, James D. Rein, Registered Land Surveyor No. S-1234  
 (type or print name) certify that the corner location on this record was determined by me or under my direction and control and that this U.S. Public Land Survey Monument Record is correct and complete to the best of my knowledge and belief.

James D. Rein  
 Signature

December 28th, 1987  
 Date

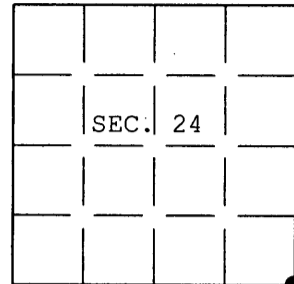


3904240000

**U.S. PUBLIC LAND SURVEY MONUMENT RECORD**

Note: This form is intended and designed to fulfill all requirements of Wisconsin Administrative Code, Chapter A-E 7.08 U.S. Public Land Survey Monument Record (3) (a) (b) (c) (d) (e) (f) (g) (h) (i). An additional sheet may be added if necessary to conform with said requirements.

(a) CORNER LOCATION: Plane Coordinates  
 Cor. of Secs. 19, 24, 25 & 30 X:  
 Township 39 North Y:  
 Range 4 & 5 East of the 4th P.M. Datum:  
 Town of Minocqua County of Oneida



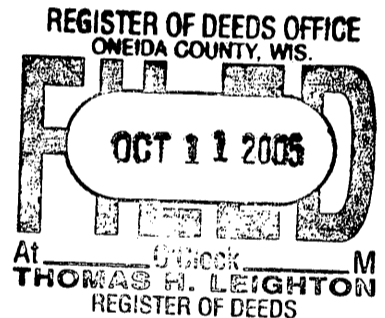
(b) HISTORY OF ORIGINAL CORNER ESTABLISHMENT

Original Surveyor: Alfred Millard Original Accessories:  
 Date of Survey: Commenced Sept. 1860 Aspen 12" N.12°E., 12 lks.  
 Completed Sept. 1860 Aspen 10" N.20°W., 20 lks.  
 W. Birch 10" S.45°E., 26 lks.  
 W. Birch 10" S.8°W., 7 lks.

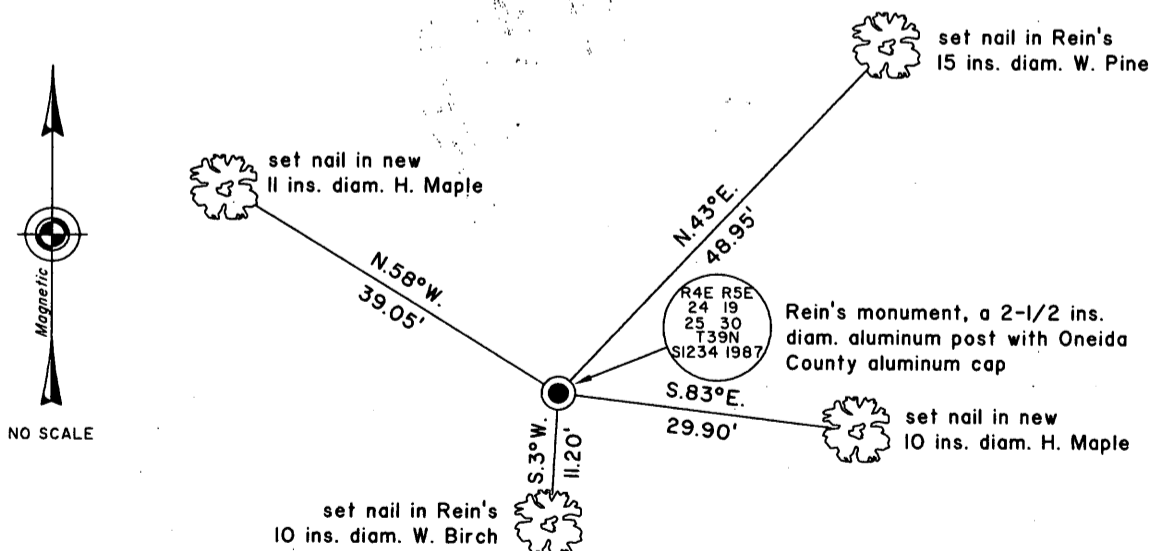
(b) (f) (g) (h) Description of monument found at this corner and if it was accepted, state all evidence (material, testimonial, occupational, plats, records, other monuments) used as a basis for accepting. If not accepted or if nothing was found, state evidence used as basis for establishing location. If re-established through lost corner proportionate methods, indicate all monuments, distances and directions used to establish. Indicate type of monument and sign post found or set.

28 Dec. 1987: USPLS Monument Record prepared by James D. Rein and filed in the office of the Oneida County Register of Deeds. Set aluminum monument based on previously perpetuated location.

25 Apr. 2005: I found and accepted Rein's monument, a 2-1/2 ins. diam. aluminum post with Oneida County aluminum cap projecting 3 ins. above the ground surface. Rein's maple bearing tree is a snag, his 16 ins. diam. pine a stump, both found at record bearing and distance. I found and established accessories as shown below and found a white plastic sign post bearing Southwest, 1 ft. dist.



(c) (d) (e) Plan view of corner with ties to at least 4 witness monuments. If in disagreement with previously established corner, show the distances between the two corners and also indicate the ties to the disputed.



(i) I, Jeffrey W. Austin, Registered Land Surveyor No. S-1885, hereby certify upon honor that the corner location on this record was determined by me or under my direction and control and that this U.S. Public Land Survey Monument Record is correct and complete to the best of my knowledge and belief.

Signature \_\_\_\_\_ Date 7 JUNE 2005



INDEX NO. R-25

3904240000