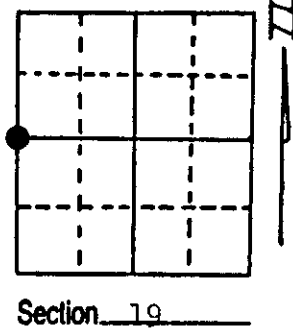
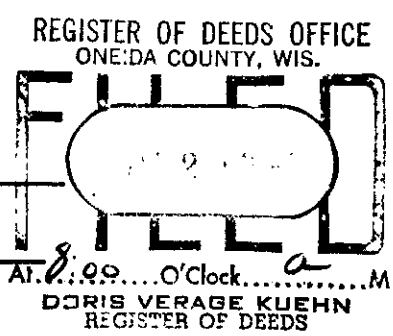


# U.S. PUBLIC LAND SURVEY MONUMENT RECORD

**Note:** This form is intended and designed to fulfill all requirements of Wisconsin Administrative Code, Chapter A-E 5.02, U.S. Public Land Survey Monument Record (3) (a) (b) (c) (d) (e) (f) (g) (h) (i). An additional sheet may be added if necessary to conform with said requirements.

(a) Corner location: Township 39 North  
 Range 5 East/West  
 Town/City/Village Minocqua  
 County Oneida



(b) (f) (g) (h) Description of monument found at this corner and if it was accepted, state all evidence (material, testimonial, occupational, plats, records, other monuments) used as a basis for accepting. If not accepted or if nothing was found, state evidence used as basis for establishing location. If reestablished through lost corner proportionate methods, indicate all monuments, distances and directions used to establish.

Original survey was performed by Alfred Millard in September, 1860.

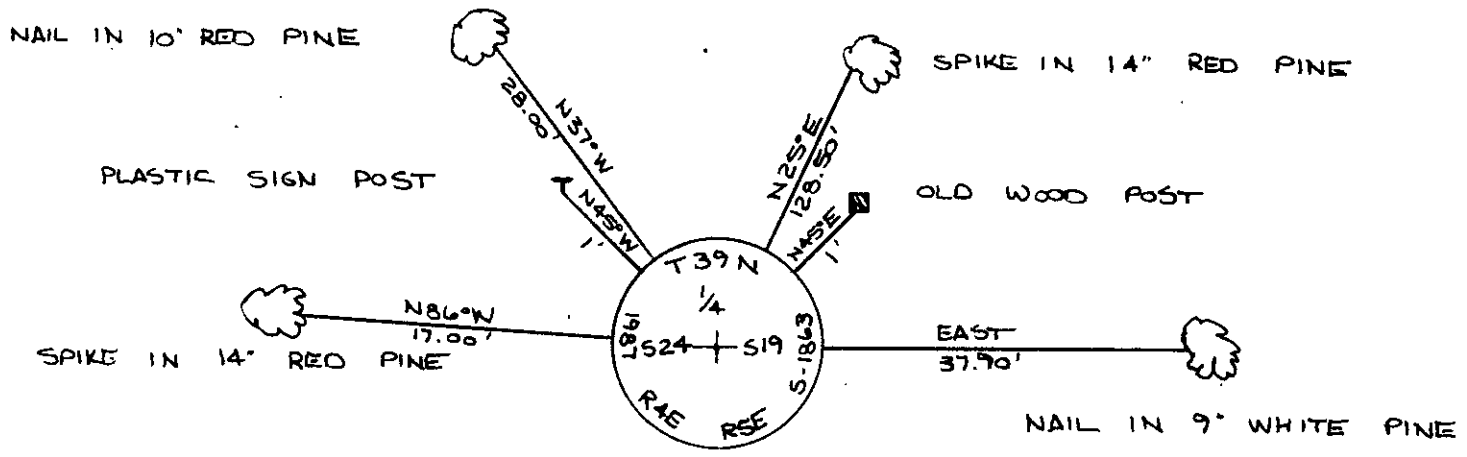
Wood Post Set:  
 Tamarack 10" North 473 lks.

Found and accepted 2" iron pipe with wood post scribed 1/4, S19, S24. Replaced pipe with 2" X 30" Oneida County Aluminum Monument with aluminum tablet stamped to identify corner.

Found existing BT's:

Red Pine	14"	N25°E	129.5 feet
Red Pine	14"	N86°W	17.0 feet
White Pine	9"	East	37.9 feet

(c) (d) (e) Plan view of corner with ties to at least 4 witness monuments. If in disagreement with previously established corner, show the distances between the two corners and also indicate the ties to the disputed corner. Magnet set below monument.



(i) I, Dennis B. Roberts  
 (type or print name) certify that the corner location on this record was determined by me or under my direction and control and that this U.S. Public Land Survey Monument Record is correct and complete to the best of my knowledge and belief.

Dennis B. Roberts 10/12/87  
 Signature Date



Index No. P-1

3904242000

