

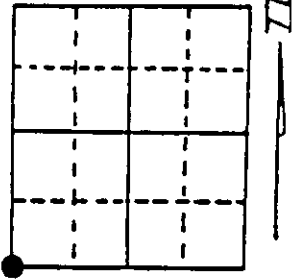
# U.S. PUBLIC LAND SURVEY MONUMENT RECORD

**Note:** This form is intended and designed to fulfill all requirements of Wisconsin Administrative Code, Chapter A-E 7.08 U.S. Public Land Survey Monument Record (3) (a) (b) (c) (d) (e) (f) (g) (h) (i). An additional sheet may be added if necessary to conform with said requirements.

(a) Corner location: Township 39 North  
 Range 5 East/West

Town/City/Village Minocqua

County Oneida



Southwest corner of Section 30

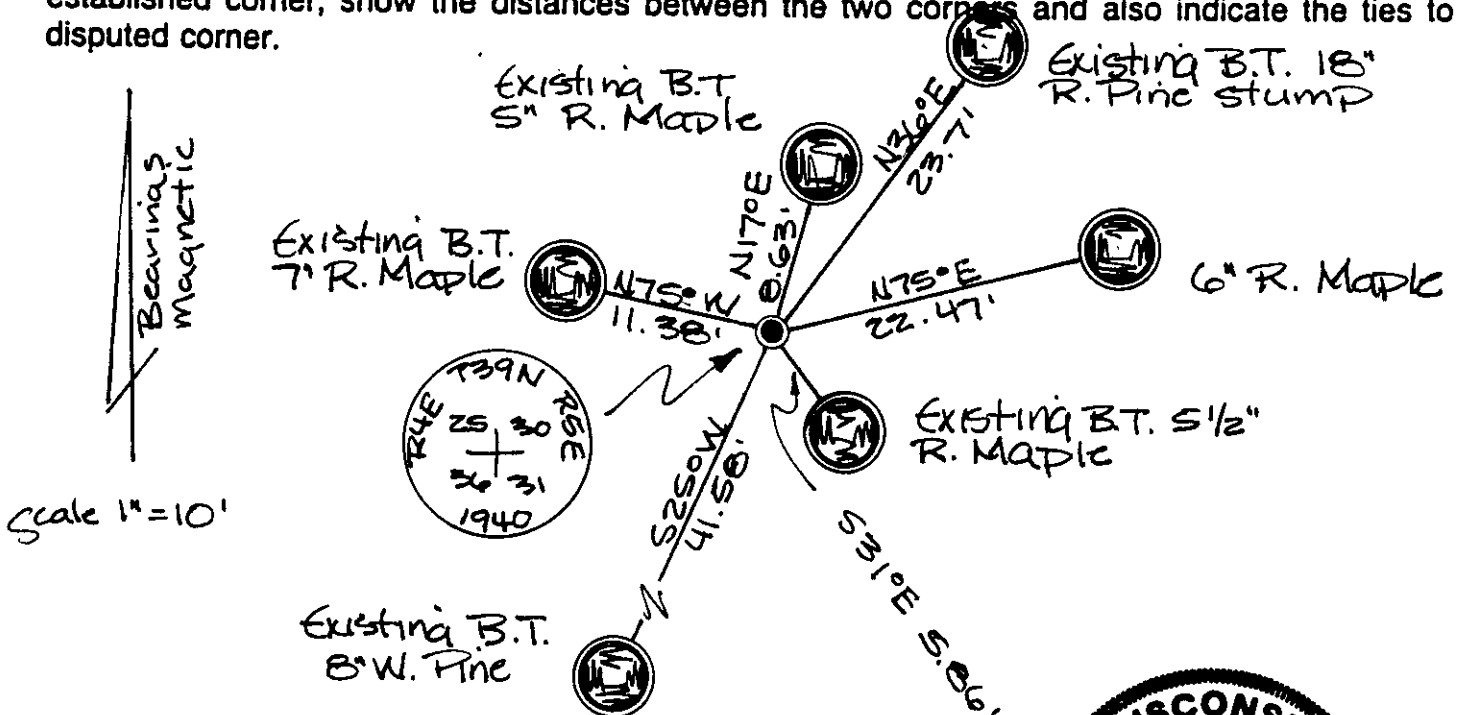
(b) (f) (g) (h) Description of monument found at this corner and if it was accepted, state all evidence (material, testimonial, occupational, plats, records, other monuments) used as a basis for accepting. If not accepted or if nothing was found, state evidence used as basis for establishing location. If reestablished through lost corner proportionate methods, indicate all monuments, distances and directions used to establish. Indicate type of monument found or set and sign post.

Sept. 1860 Alfred Millard, Deputy Surveyor, set post for the corner witnessed by four bearing trees: 10" Hemlock N33°E, 9 links; 10" Hemlock S40°E, 17 links; 12" Hemlock N40°W, 43 links and a 12" Hemlock S15°W, 19 links.

April 17th, 1940 - Harry C. Hall, Oneida County Surveyor, re-established the southwest corner of Section 30 by projecting from the South Quarter Corner through Dorr's One-eighth and set a county monument referenced by a 12" W. Pine N30¼°W, 1.075 chains and an 18" Y. Pine stump N38½°E, 0.349 chains.

April 1991 - James D. Rein, Registered Land Surveyor, recovered a brass capped 2" dia. iron pipe and an old rotted down post witnessed by an 18" Y. Pine stump N36°E, 23.7 feet; a 7" R. Maple N75°W, 11.38 feet; an 8" W. Pine S25°W, 41.58 feet; a 5½" Maple S31°E, 5.86 feet and a 5" R. Maple N17°E, 8.63 feet; Hall's 15" W. Pine was found wind blown. Made new reference ties as shown in plan view, set plastic post 1½ feet South of the corner monument.

(c) (d) (e) Plan view of corner with ties to at least 4 witness monuments. If in disagreement with previously established corner, show the distances between the two corners and also indicate the ties to the disputed corner.



(i) I, James D. Rein, Registered Land Surveyor No. 1234  
 (type or print name) certify that the corner location on this record was determined by me or under my direction and control and that this U.S. Public Land Survey Monument Record is correct and complete to the best of my knowledge and belief.



James D. Rein  
 Signature  
 June 6th, 1991  
 Date

3964 250000  
 Stamp

Index No. Y-1