

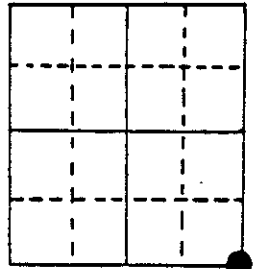
U.S. PUBLIC LAND SURVEY MONUMENT RECORD

Note: This form is intended and designed to fulfill all requirements of Wisconsin Administrative Code, Chapter A-E 5.02, U.S. Public Land Survey Monument Record (3) (a) (b) (c) (d) (e) (f) (g) (h) (i). An additional sheet may be added if necessary to conform with said requirements.

(a) Corner location: Township 39 North
 Range 4 East/West

Town/City/Village Minocqua

County Oneida



Section 27

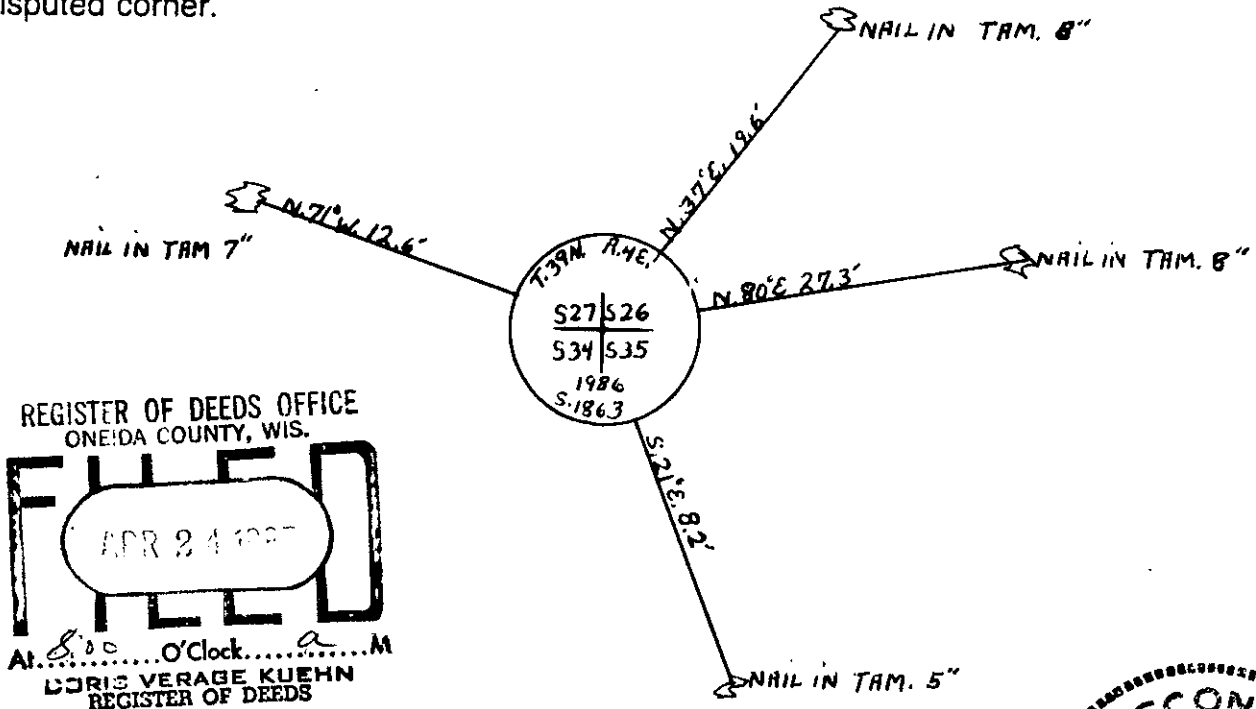
(b) (f) (g) (h) Description of monument found at this corner and if it was accepted, state all evidence (material, testimonial, occupational, plats, records, other monuments) used as a basis for accepting. If not accepted or if nothing was found, state evidence used as basis for establishing location. If reestablished through lost corner proportionate methods, indicate all monuments, distances and directions used to establish.

Found old wood post scribed, 26,27,34 & 35. No evidence of brass cap. NEPCO tag on fallen tree by Stuth & Voyt 1958. Set Oneida County aluminum cap 3" diameter on 2" aluminum pipe six feet long over nail on west side old post. Set nails in E.T.'s

Tamarack	5"	S21°E	8.2 feet
Tamarack	7"	N71°W	12.6 feet
Tamarack	8"	N37°E	19.6 feet
Tamarack	8"	N80°E	27.3 feet

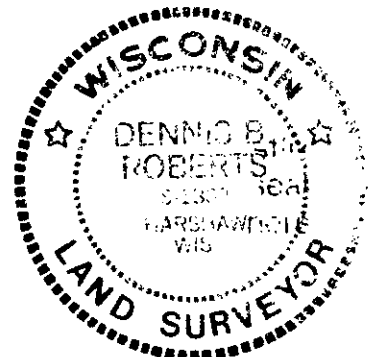
Plastic Sign Post N45°W 1 foot

(c) (d) (e) Plan view of corner with ties to at least 4 witness monuments. If in disagreement with previously established corner, show the distances between the two corners and also indicate the ties to the disputed corner.



(i) I, Dennis E. Roberts
 (type or print name) certify that the corner location on this record was determined by me or under my direction and control and that this U.S. Public Land Survey Monument Record is correct and complete to the best of my knowledge and belief.

Dennis E. Roberts 4-22-87
 Signature Date



Index No. V 17

3904270000