

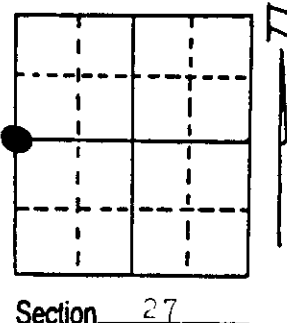
U.S. PUBLIC LAND SURVEY MONUMENT RECORD

Note: This form is intended and designed to fulfill all requirements of Wisconsin Administrative Code, Chapter A-E 5.02, U.S. Public Land Survey Monument Record (3) (a) (b) (c) (d) (e) (f) (g) (h) (i). An additional sheet may be added if necessary to conform with said requirements.

(a) Corner location: Township 39 North
 Range 4 East/West

Town/City/Village Minocqua

County Oneida



Section 27

(b) (f) (g) (h) Description of monument found at this corner and if it was accepted, state all evidence (material, testimonial, occupational, plats, records, other monuments) used as a basis for accepting. If not accepted or if nothing was found, state evidence used as basis for establishing location. If reestablished through lost corner proportionate methods, indicate all monuments, distances and directions used to establish.

The original Government Survey was performed by Alexander Anderson, in 1865.

Set wood corner post - West One Quarter Corner

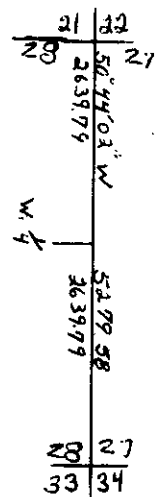
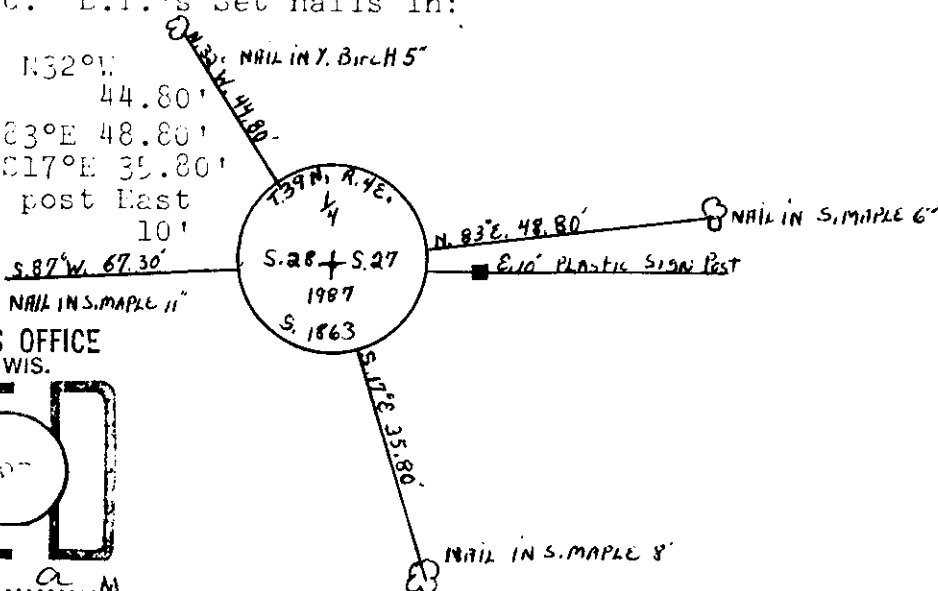
Birch 18" S63°E 13 links

Hemlock 10" S30°W 26 links

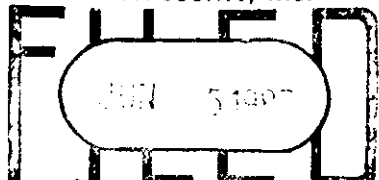
Re-established through lot corner proportionate methods

(c) (d) (e) Plan view of corner with ties to at least 4 witness monuments. If in disagreement with previously established corner, show the distances between the two corners and also indicate the ties to the disputed corner. Set Oneida County 2" aluminum pipe, 30" long with 3" diameter aluminum tablet, stamped to identify corner, 10" below flush in East ditch of Woods Road. E.T.'s Set nails in:

- Y. Birch 5' N32°W 44.80'
- S. Maple 6' N63°E 48.80'
- S. Maple 8' S17°E 35.80'
- Plastic sign post East 10'



REGISTER OF DEEDS OFFICE
 ONEIDA COUNTY, WIS.



At 8:00 O'clock A
 DORIS VERAGE KUEHN
 REGISTER OF DEEDS

(i) I, Lennis E. Roberts
 (type or print name) certify that the corner location on this record was determined by me or under my direction and control and that this U.S. Public Land Survey Monument Record is correct and complete to the best of my knowledge and belief.

Lennis E. Roberts 5-20-87
 Signature Date



3904282000

Index No. F-13