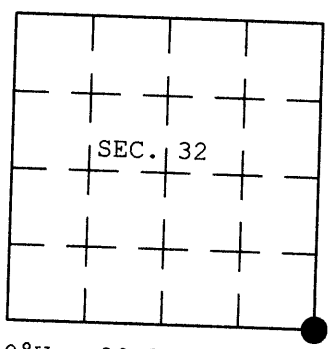


# U.S. PUBLIC LAND SURVEY MONUMENT RECORD

Note: This form is intended and designed to fulfill all requirements of Wisconsin Administrative Code, Chapter A-E 7.08 U.S. Public Land Survey Monument Record (3) (a) (b) (c) (d) (e) (f) (g) (h) (i). An additional sheet may be added if necessary to conform with said requirements.

(a) CORNER LOCATION: Plane Coordinates  
 Corner of Secs. 4, 5, 32 & 33 X:  
 Township 38 & 39 North Y:  
 Range 4 East Datum:  
 Town of Minocqua County of Oneida



(b) HISTORY OF ORIGINAL CORNER ESTABLISHMENT

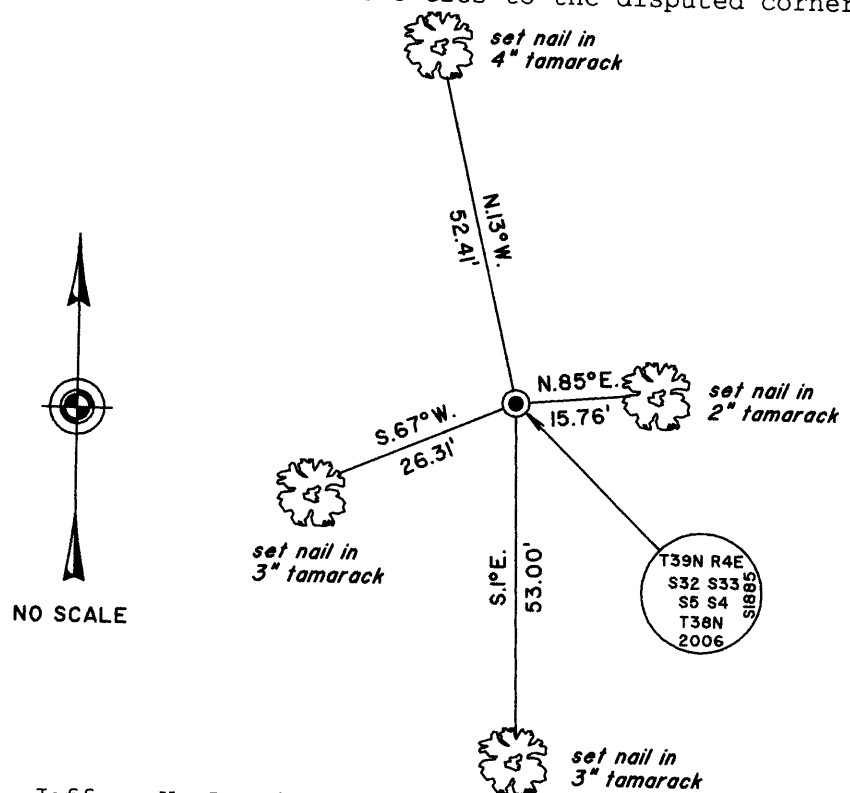
Original Surveyor: Alexander Anderson  
 Date of Survey: Commenced July, 1864  
 Completed August, 1864

Original Accessories:  
 spruce 7" N.40°W., 20 lks.  
 spruce 5" N.64°E., 35 lks.  
 spruce 5" S.22°E., 45 lks.  
 spruce 6" S.56°W., 18 lks.

(b) (f) (g) (h) Description of monument found at this corner and if it was accepted, state all evidence (material, testimonial, occupational, plats, records, other monuments) used as a basis for accepting. If not accepted or if nothing was found, state evidence used as basis for establishing location. If reestablished through lost corner proportionate methods, indicate all monuments, distances and directions used to establish. Indicate type of monument and sign post found or set.

29 Nov 2006: I found no evidence of the original GLO survey or any subsequent survey activity. I established this corner by single proportionate measurement as shown on the reverse side of this form. The westerly controlling corner (3903360000) is a 5" diam. GLO concrete monument and the easterly controlling corner (3904340000) is a 2-1/2" diam. Oneida Co. aluminum monument. Coordinates shown are Oneida Co. grid coordinates referenced to a local control station (spike) by Wilderness Surveying, Inc. Stakeout was performed using RTK GPS equipment with a check on Oneida Co. control station 207S and PLSS corner 3904282000. I monumented the corner with an aluminum post, 60" long, 2-1/2" diam., with an Oneida Co. aluminum cap projecting 12" above the bog surface. I established accessories as shown below and set a white plastic sign post NE, 1 ft.

(c) (d) (e) Plan view of corner with ties to at least 4 witness monuments. If in disagreement with previously established corner, show the distances between the two corners and also indicate the ties to the disputed corner.



REGISTER OF DEEDS OFFICE  
 ONEIDA COUNTY, WIS.  
  
 At \_\_\_\_\_ O'Clock \_\_\_\_\_ M  
**THOMAS H. LEIGHTON**  
 REGISTER OF DEEDS

**JEFFREY W. AUSTIN**  
 S-1885  
 MINOCQUA, WI  
 LAND SURVEYOR

(i) I, Jeffrey W. Austin, Registered Land Surveyor No. S-1885, hereby certify upon honor that the corner location on this record was determined by me or under my direction and control and that this U.S. Public Land Survey Monument Record is correct and complete to the best of my knowledge and belief.

Signature Date 10 APR 2007

INDEX NO. Z-9

Z-9

3904320000

