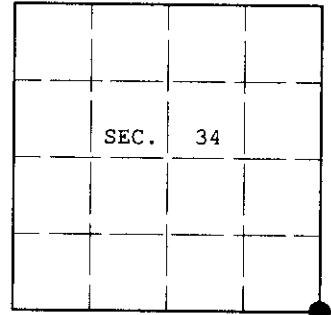


**U.S. PUBLIC LAND SURVEY MONUMENT RECORD**

Note: This form is intended and designed to fulfill all requirements of Wisconsin Administrative Code, Chapter A-E 7.08 U.S. Public Land Survey Monument Record (3) (a) (b) (c) (d) (e) (f) (g) (h) (i). An additional sheet may be added if necessary to conform with said requirements.

(a) CORNER LOCATION:  
 Corner common to Secs. 2, 3, 34, 35  
 Township 38 and 39 North  
 Range 4 East, 4th Principal Meridian  
 Town of Minocqua

Plane Coordinates  
 X:  
 Y:  
 Datum:  
 County of Oneida



(b) HISTORY OF ORIGINAL CORNER ESTABLISHMENT

Original Surveyor: Alexander Anderson  
 Date of Survey: Commenced: July 25, 1864  
 Completed: August 7, 1864

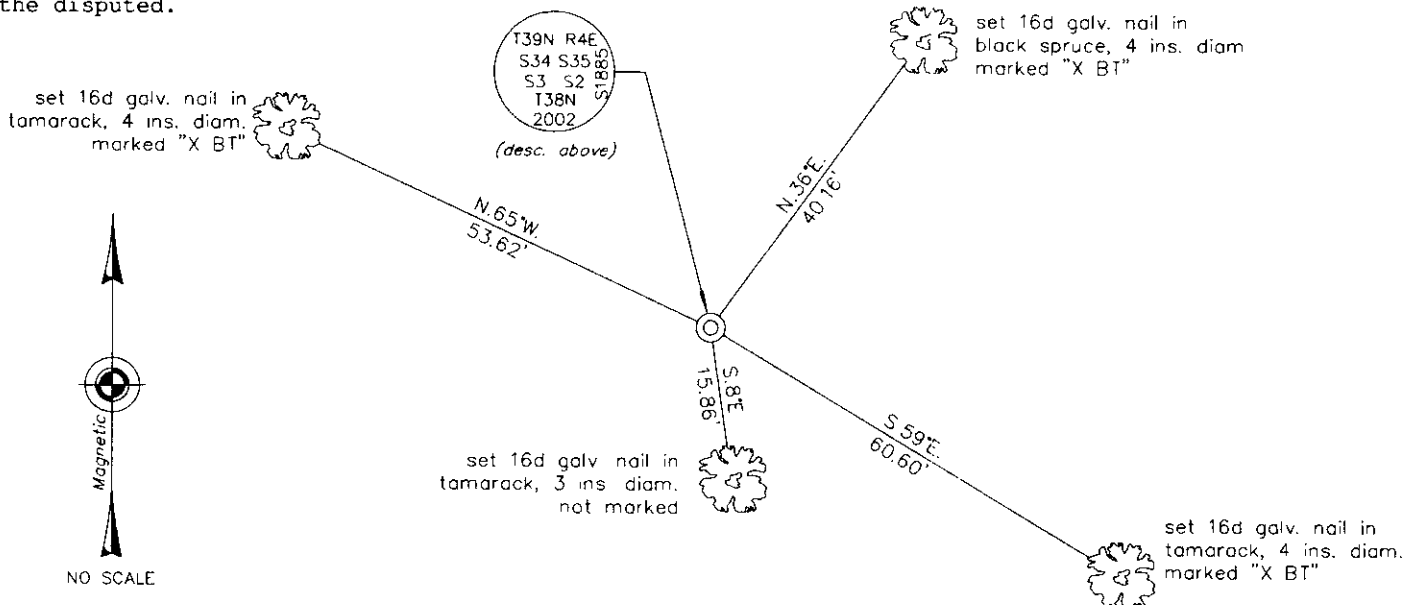
Original Accessories:  
 Spruce 7 N.60°W. 48 lks.  
 Spruce 6 N.14°E. 46 lks.  
 Spruce 5 S.23°E. 60 lks.  
 Spruce 6 S.45°W. 50 lks.

(b) (f) (g) (h) Description of monument found at this corner and if it was accepted, state all evidence (material, testimonial, occupational, plats, records, other monuments) used as a basis for accepting. If not accepted or if nothing was found, state evidence used as basis for establishing location. If reestablished through lost corner proportionate methods, indicate all monuments, distances and directions used to establish. Indicate type of monument and sign post found or set.

November 1, 1937: Ray Hall performs reconnaissance work for the "Bootjack Game Refuge" and sets a tamarack post to perpetuate his recovery of the remains of Anderson's wood post and the scribed remains of the NW and SW original bearing trees. His dist. to the NE cor. of sec. 2 is 5257 ft. and his dist. to the SW cor. of sec. 2 is 5344 ft. The notes of his survey are preserved in CCC Book 9 on pages 1 through 4 in the office of the Oneida County Surveyor.

July 1, 2002: I find a very old 4 in. diam. wood post with a tall picket standing nearby. The deteriorated remains of one of the original bearing tree stumps bears S.42°W., 50 links dist. I also observed this corner location using GPS and static relative positioning techniques, the complete report of which has been submitted to the Oneida County Surveyor. The result of this work indicates the NE cor. of sec. 2 bears N.89°33'20"E. (mean true bearing), 5252.58 ft. dist. and the SW cor. of sec. 2 bears S.0°12'45"W. (mean true bearing), 5335.03 ft. dist. I accept the wood post as Hall's monument or an acceptable perpetuation thereof. I replace the wood post with an aluminum post, 60 ins. long, 2-1/2 ins. diam. with Oneida County aluminum cap protruding 12 ins. above the sphagnum bog and marked as shown below. I establish accessories as shown below. I deposit a blue/black "DEEP-1" magnet adjacent to the aluminum post. I set a plastic "SURVEY MARKER" sign post bearing Northeast, 1 ft. dist.

(c) (d) (e) Plan view of corner with ties to at least 4 witness monuments. If in disagreement with previously established corner, show the distances between the two corners and also indicate the ties to the disputed.

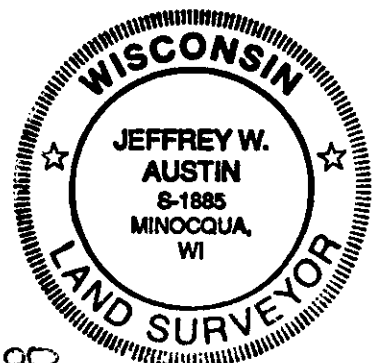


(i) I, Jeffrey W. Austin, Registered Land Surveyor No. S-1885, hereby certify upon honor that the corner location on this record was determined by me or under my direction and control and that this U.S. Public Land Survey Monument Record is correct and complete to the best of my knowledge and belief.

Jeffrey W. Austin #S-1885

Date

JAN 5 2003



INDEX NO. 2-17

39043400 00