

U.S. PUBLIC LAND SURVEY MONUMENT RECORD

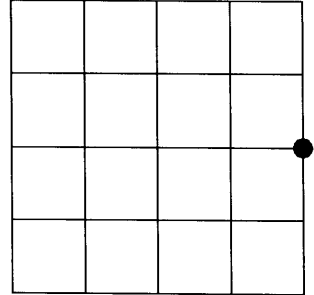
Note: This form is intended and designed to fulfill all requirements of the Wisconsin Administrative Code, Chapter A-E 7.08 U.S. Public Land Monument Record (3)(a)(b)(c)(d)(e)(f)(g)(h)(i). An additional sheet may be added if necessary to conform with said requirements.

(a) CORNER LOCATION:

East Quarter corner of Section 34
Township 39 North
Range 4 East
Town of Minocqua
County of Oneida
Wisconsin

COORDINATES

North: 233274.2613
East: 123298.2173
Control Station: MINOCQUA C GPS - 207S
Latitude: 45° 49' 30.13836" N
Longitude: 89° 57' 46.60901" W
Datum: Oneida County Grid (NAD 83 - 1991)
Method: Real Time Kinetic GPS (Direct)



SECTION 34

(b) HISTORY OF ORIGINAL CORNER ESTABLISHMENT

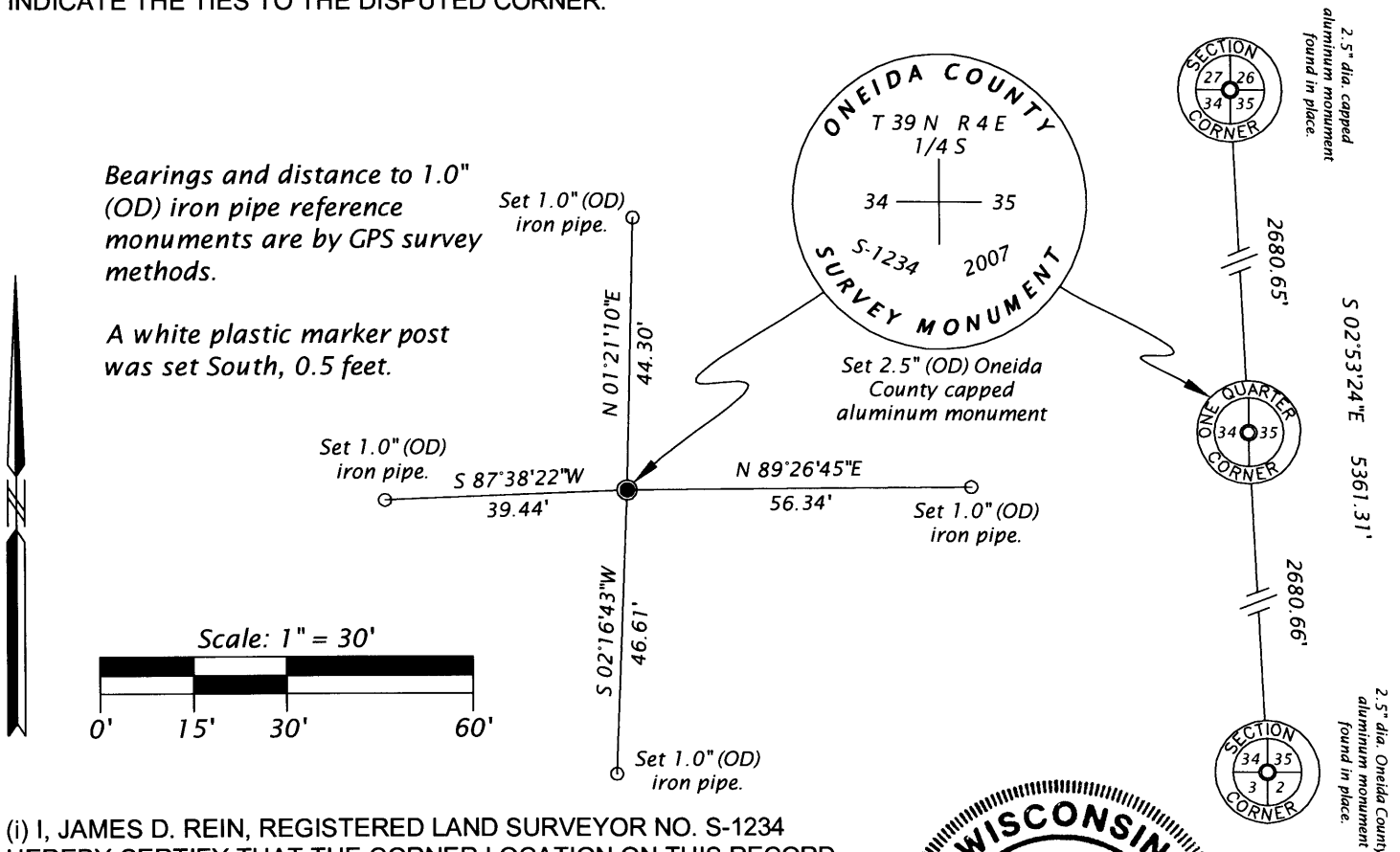
Original Surveyor: Alexander Anderson - Set 1/4 Section post
Date of Survey: Commenced - May 9, 1865
Completed - May 22, 1865

Original B.T.'S - 10" Tamarack, S 73°E, 17 links
10" Tamarack, N 38°E, 6 links

(f)(g)(h) DESCRIPTION OF MONUMENT FOUND AT THIS CORNER AND IF IT WAS ACCEPTED, STATE ALL EVIDENCE (MATERIAL, TESTIMONIAL, OCCUPATIONAL, PLATS, RECORDS, OTHER MONUMENTS) USED AS A BASIS FOR ESTABLISHING LOCATION. IF NOT ACCEPTED OF IF NOTHING WAS FOUND, STATE EVIDENCE USED AS BASIS FOR ESTABLISHING LOCATION. IF REESTABLISHED THROUGH LOST CORNER PROPORTIONATE METHODS, INDICATE ALL MONUMENTS, DISTANCES AND DIRECTIONS USED TO ESTABLISH. INDICATE TYPE OF MONUMENT AND SIGN POST FOUND OR SET.

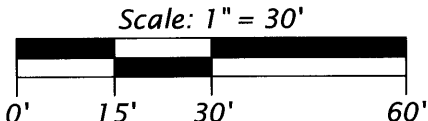
February 2007 - I, James D. Rein, searched for and found no evidence of existing corner or accessories. By single proportionate methods I SET a 2.5" (OD) Oneida County capped aluminum monument in an old beaver flowage and set four (4) new reference monuments as noted on the sketch below.

(c)(d)(e) PLAN VIEW OF CORNER WITH TIES TO AT LEAST 4 WITNESS MONUMENTS. IF IN DISAGREEMENT WITH PREVIOUSLY ESTABLISHED CORNER, SHOW THE DISTANCE BETWEEN THE TWO CORNERS AND ALSO INDICATE THE TIES TO THE DISPUTED CORNER.



Bearings and distance to 1.0" (OD) iron pipe reference monuments are by GPS survey methods.

A white plastic marker post was set South, 0.5 feet.



(i) I, JAMES D. REIN, REGISTERED LAND SURVEYOR NO. S-1234 HEREBY CERTIFY THAT THE CORNER LOCATION ON THIS RECORD WAS DETERMINED BY ME OR UNDER MY DIRECTION AND CONTROL AND THAT THIS U.S. PUBLIC LAND SURVEY MONUMENT RECORD IS CORRECT AND COMPLETE TO THE BEST OF MY KNOWLEDGE AND BELIEF.

SIGNATURE

DATE 3/26/07

