

At O'Clock M  
~~At~~ Oneida County Monument  
U.S. PUBLIC LAND SURVEY MONUMENT RECORD  
REGISTER OF DEEDS

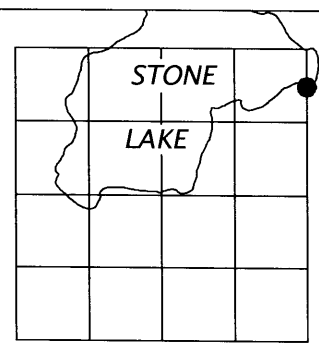
Note: This form is intended and designed to fulfill all requirements of the Wisconsin Administrative Code, Chapter A-E 7.08 U.S. Public Land Monument Record (3)(a)(b)(c)(d)(e)(f)(g)(h)(i). An additional sheet may be added if necessary to conform with said requirements.

(a) CORNER LOCATION:

Meander Corner, east line of Section 34,  
southerly shore of Stone Lake.  
Township 39 North  
Range 4 East  
Town of Minocqua  
County of Oneida  
Wisconsin

COORDINATES

North: 235259.8259  
East: 123197.9814  
Control Station: MINOCQUA C GPS - 207S  
Latitude: 45° 49' 49.73354" N  
Longitude: 89° 57' 48.17102" W  
Datum: Oneida County Grid (NAD 83 - 1991)  
Method: Real Time Kinetic GPS (Direct)



SECTION 34

(b) HISTORY OF ORIGINAL CORNER ESTABLISHMENT

Original Surveyor: Alexander Anderson - Set meander corner  
Date of Survey: Commenced - May 9, 1865  
Completed - May 22, 1865  
Original B.T.'S - 5" Black Ash, S 27°W, 25 links  
7" Black Ash, S 26°E, 33 links

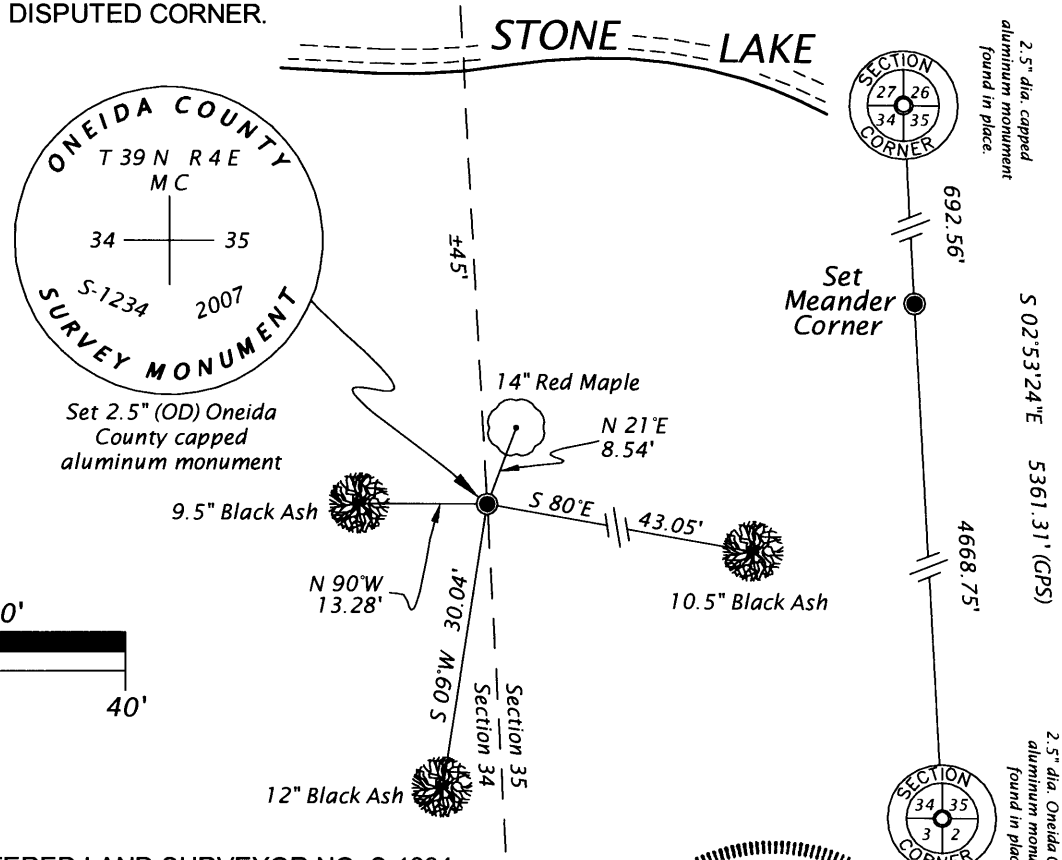
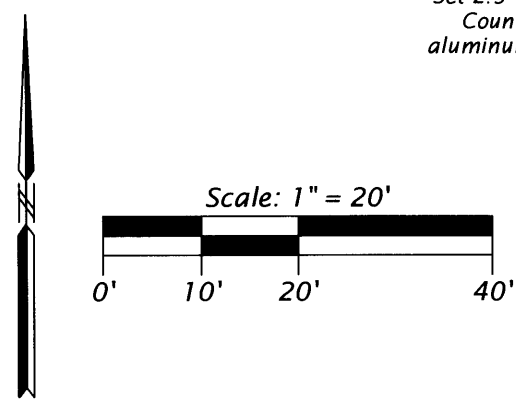
(f)(g)(h) DESCRIPTION OF MONUMENT FOUND AT THIS CORNER AND IF IT WAS ACCEPTED, STATE ALL EVIDENCE (MATERIAL, TESTIMONIAL, OCCUPATIONAL, PLATS, RECORDS, OTHER MONUMENTS) USED AS A BASIS FOR ESTABLISHING LOCATION. IF NOT ACCEPTED OF IF NOTHING WAS FOUND, STATE EVIDENCE USED AS BASIS FOR ESTABLISHING LOCATION. IF REESTABLISHED THROUGH LOST CORNER PROPORTIONATE METHODS, INDICATE ALL MONUMENTS, DISTANCES AND DIRECTIONS USED TO ESTABLISH. INDICATE TYPE OF MONUMENT AND SIGN POST FOUND OR SET.

February 2007 - I, James D. Rein, searched for and found no evidence of existing corner or accessories. I SET a 2.5" (OD) Oneida County capped aluminum monument on line between the NE corner and SE corner of Section 34, both found in place, and approximately 45 feet from the southerly shore of Stone Lake and made four (4) new BTs as noted on the sketch below.

(c)(d)(e) PLAN VIEW OF CORNER WITH TIES TO AT LEAST 4 WITNESS MONUMENTS. IF IN DISAGREEMENT WITH PREVIOUSLY ESTABLISHED CORNER, SHOW THE DISTANCE BETWEEN THE TWO CORNERS AND ALSO INDICATE THE TIES TO THE DISPUTED CORNER.

Bearings were taken using a hand-held compass and distances by steel tape to aluminum nails.

A white plastic marker post was set South, 1.4 feet.



(i) I, JAMES D. REIN, REGISTERED LAND SURVEYOR NO. S-1234 HEREBY CERTIFY THAT THE CORNER LOCATION ON THIS RECORD WAS DETERMINED BY ME OR UNDER MY DIRECTION AND CONTROL AND THAT THIS U.S. PUBLIC LAND SURVEY MONUMENT RECORD IS CORRECT AND COMPLETE TO THE BEST OF MY KNOWLEDGE AND BELIEF

*[Handwritten Signature]*  
SIGNATURE

3/26/07  
DATE

