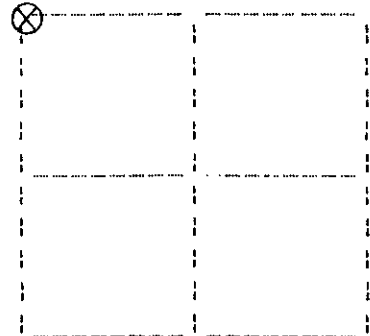


U. S. PUBLIC LAND SURVEY MONUMENT RECORD

Note: This form is intended and designed to fulfill all requirements of Wisconsin Administrative Code, Chapter A-E 7.08 U.S. Public Land Survey Monument Record(3)(a)(b)(c)(d)(e)(f)(g)(h)(i). An additional sheet may be added if necessary to conform with said requirements.

(a) Corner location: Township 38 North
 Range 4 East
 Town of Minocqua
 Oneida County, Wisconsin



Section 1

(b)(f)(g)(h) Description of monument found at this corner and if it was accepted, state all evidence (material, testimonial, occupational, plats, records, other monuments) used as a basis for accepting. If not accepted or if nothing was found, state evidence used as basis for establishing location. If reestablished through lost corner proportionate methods, indicate all monuments, distances and directions used to establish. Indicate type of monument found or set and sign post.

August, 1864: Alexander Anderson notes the following: 80.00 set post for cor. to sec. 1,2,35&36: hemlock 10 (no bear), 22; hemlock 16 (no bear), 21; do 12 (no bear), 5; do 9 (no bear), 16.

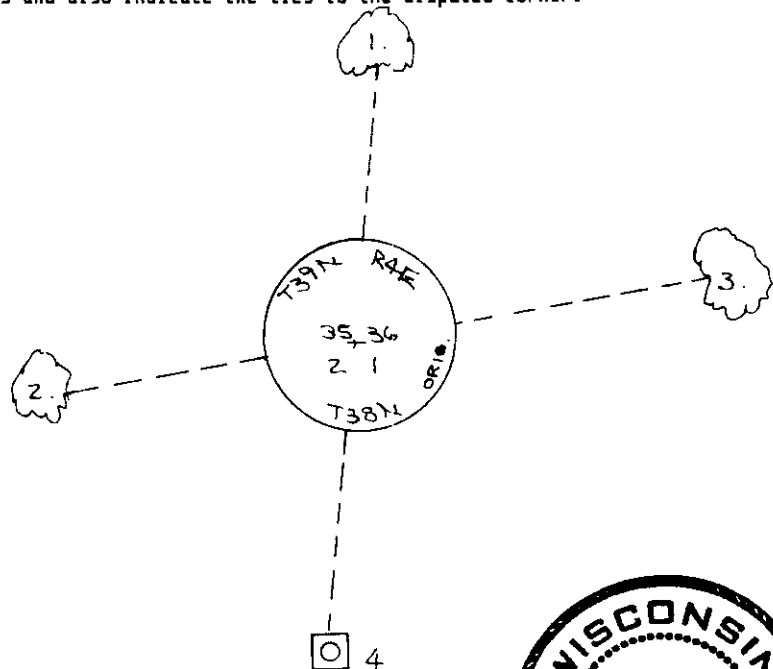
December 1, 1933: Hall page 188 notes the following: orig. cor. secs. 1&2 on NL Tp38N R4E, set new post at orig. NW cor. sec. 1. by stp. of only orig. bearing to be found. deputy alex anderson omitted bearings of 4 trees he marked here but since he habitually used a regular sequence in noting bearings i.e. NW, NE, SE & SW: we have for no. 4 hem. 9" S_W, .16. since only bearing found has "BT" facing NEly we swing arc of .16 from stp. & find an old post hole in same gen'l. direction as post found. (N63°E). existing post meas. .205 from BT. pile rocks around our post and mark: w.pine 9" north, .92 or in sec. 36. cor. is on low ridge NE&SW many old hemlocks down. CL fire lane proposed brs. E 2.025 chs. fire lane brs. S58°W here.

July 26, 1990: I found and accepted a 3" dia. iron capped iron post stamped as shown below. From which: a stp. hole bears S62°W, 10.7 feet; a nail set in a prev. w.pine 26" bears N5°E, 61.53 feet; a nail set in a w.pine 7" bears S79°W, 22.28 feet; a nail set in a w.pine 10" bears N80°E, 22.33 feet; a 3-1/2" dia. brass disk found in a 6-1/2" sq. concrete post (USGS BM TT1E 1937) bears S5°W, 56.35 feet; a plastic sign post was set North, 1.5 feet.

(c)(d)(e) Plan view of corner with ties to at least four witness monuments. If in disagreement with previously established corner, show the distances between the two corners and also indicate the ties to the disputed corner.

1. nail in w.pine 26" N5E, 61.53 feet.
2. nail in w.pine 7" S79W, 22.28 feet.
3. nail in w.pine 10" N80E, 22.33 feet.
4. USGS BM TT1E described above S5W, 56.35 feet.

(not to scale)



I, Jeffrey W. Austin, Registered Land Surveyor S-1885 certify that the corner location on this record was determined by me or under my direction and control and that this U.S. Public Land Survey Monument Record is correct and complete to the best of my knowledge and belief.



Signature: *Jeffrey W. Austin* Date: AUGUST 17, 1990

Index no. A-21

3904350000

A 21

U.S. PUBLIC LAND SURVEY MONUMENT RECORD

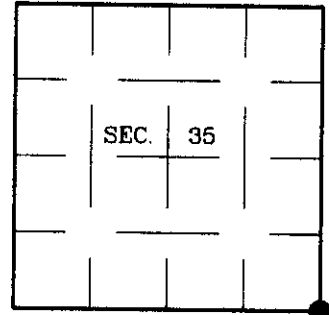
Note: This form is intended and designed to fulfill all requirements of Wisconsin Administrative Code, Chapter A-E 7.08 U.S. Public Land Survey Monument Record (3)(a)(b)(c)(d)(e)(f)(g)(h)(i). An additional sheet may be added if necessary to conform with said requirements.

(a) CORNER LOCATION:

Corner common to Secs. 1, 2, 35, 36
Township 38 and 39 North
Range 4 East, 4th Principal Meridian
Town of Minocqua

Plane Coordinates

X:
Y:
Datum:
County of Oneida



(b) HISTORY OF ORIGINAL CORNER ESTABLISHMENT

Original Surveyor: Alexander Anderson
Date of Survey: Commenced: August, 1864
Completed: August, 1864

Original Accessories:

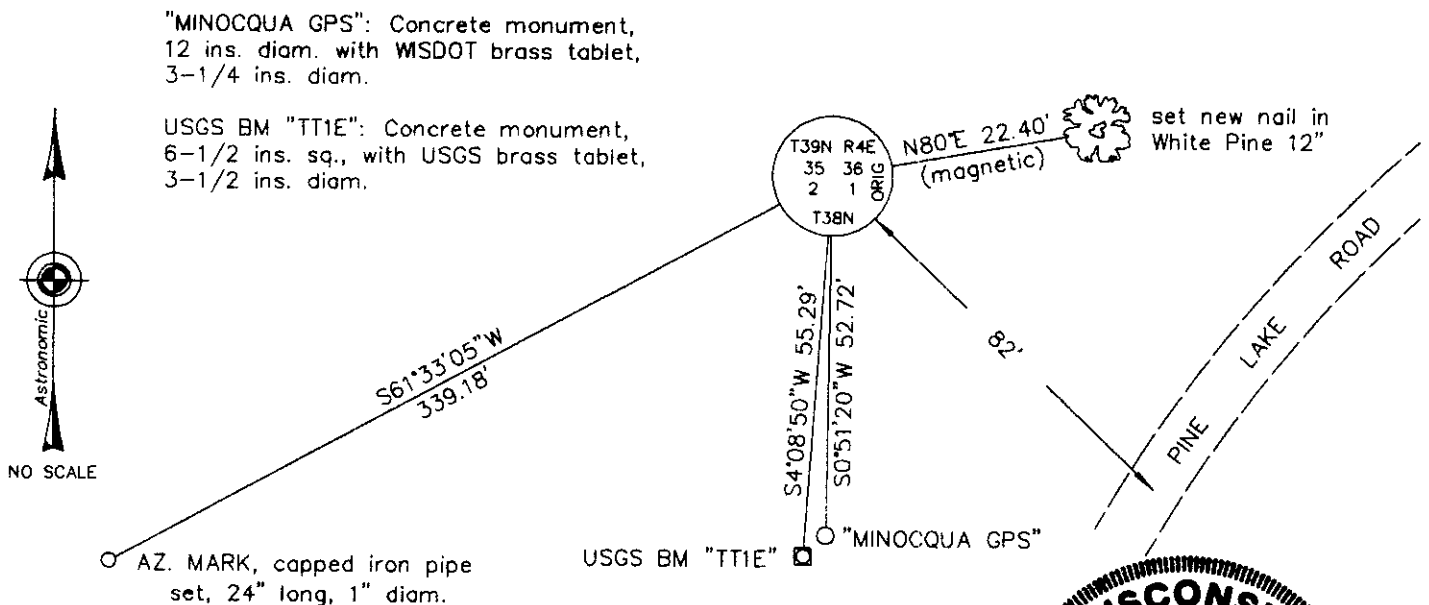
Hemlock 10 (no bearing) 22 lks.
Hemlock 16 (no bearing) 21 lks.
Hemlock 12 (no bearing) 5 lks.
Hemlock 9 (no bearing) 16 lks.

(b)(f)(g)(h) Description of monument found at this corner and if it was accepted, state all evidence (material, testimonial, occupational, plats, records, other monuments) used as a basis for accepting. If not accepted or if nothing was found, state evidence used as basis for establishing location. If reestablished through lost corner proportionate methods, indicate all monuments, distances and directions used to establish. Indicate type of monument and sign post found or set.

NOTE: This is a perpetuation of a previous USPLS Monument Record by Jeffrey W. Austin, RLS dated August 17, 1990 and filed in the office of the Oneida County Register of Deeds. A complete history of the corner can be found on the previous monument record. I accept the previous location as a true and faithful perpetuation or reestablishment of the original corner location and further perpetuate it as follows.

May 31, 2001: I found and accepted an iron post, 2-1/2 ins. diam., firmly set with a 3 ins. diam. iron cap, 8 ins. above the ground surface, marked as shown below. A rock cairn surrounds the monument. My previous Northerly bearing tree now a broken snag, my Westerly bearing tree totally gone. I performed an hour-angle solar observation to the azimuth mark, I found or established accessories as shown below and found a plastic sign post bearing North, 1-1/2 ft. dist.

(c)(d)(e) Plan view of corner with ties to at least 4 witness monuments. If in disagreement with previously established corner, show the distances between the two corners and also indicate the ties to the disputed.

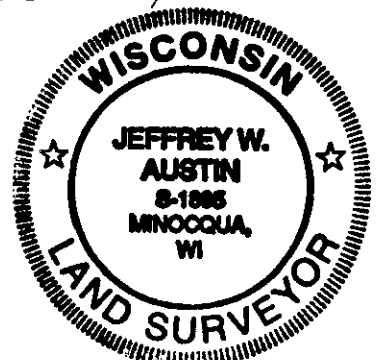


(i) I, Jeffrey W. Austin, Registered Land Surveyor No. S-1885, hereby certify that the corner location on this record was determined by me or under my direction and control and that this U.S. Public Land Survey Monument Record is correct and complete to the best of my knowledge and belief.

Signature

8-27-01

Date



INDEX NO. Z-21

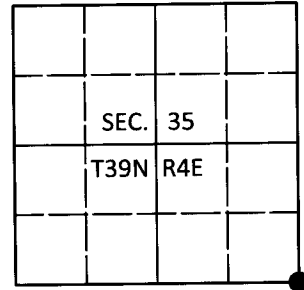
3904350000

U.S. PUBLIC LAND SURVEY MONUMENT RECORD

Note: This form is intended and designed to fulfill all requirements of Wisconsin Administrative Code, Chapter A-E 7.08 U.S. Public Land Survey Monument Record (3)(a-1).

(a) CORNER LOCATION
Cor. of Secs. 1, 2, 35 & 36
Township 38 & 39 North
Range 4 East of the 4th P.M.
Town of Minocqua
County of Oneida

WISCRS - Oneida County
N: 230,610.92 USft
E: 128,685.92 USft
Datum: NAD 83(2011)
GNSS Method: Real-Time Network
GNSS Control: WISCORS VRS



(b) HISTORY OF ORIGINAL CORNER ESTABLISHMENT

Original Surveyor:

Original Accessories:

Date of Survey Commenced:
Completed:

(b)(f)(g)(h) Description of monument found at this corner and if it was accepted, state all evidence (material, testimonial, occupational, plats, records, other monuments) used as a basis for accepting. If not accepted or if nothing was found, state evidence used as basis for establishing location. If re-established through lost corner proportionate methods, indicate all monuments, distances and directions used to establish. Indicate type of monument and sign post found or set.

This is a perpetuation of a previous USPLS Monument Record by Jeffrey W. Austin, RLS dated August 27, 2001 and filed in the office of the Oneida County Register of Deeds. A complete history of the corner can be found on the previous monument record. I accept the previous location as a true and faithful perpetuation or reestablishment of the original corner location and further perpetuate it as follows.

January 16, 2017: Jeff Austin visited the corner and recovered the record monument, a 2-1/2" diam. iron pipe with a 3" diam. brass cap projecting 8" above the ground surface. The record accessories were found in substantial agreement with the previous record and were not remeasured as the sole purpose of this work is to report the coordinates of the corner point.

The coordinate value shown has been verified by at least one of the following methods: 1) comparison to a previously GPS determined published value; 2) the value is the average of two or more GPS observations at a markedly different time; 3) one or more distances were measured back to the GPS observed corner from temporary GPS observed offset locations.

(c)(d)(e) Plan view of corner with ties to at least 4 witness monuments. If in disagreement with previously established corner, show the distances between the two corners and also indicate the ties to the disputed.

REGISTER OF DEEDS OFFICE
ONEIDA COUNTY
FILED

JUL 11 2017

AT _____ O'CLOCK _____ M
KYLE J. FRANSON
REGISTER OF DEEDS

(i) I, Michael J. Romportl, Professional Land Surveyor No. S-1624, hereby certify that the corner location on this record was determined by me or under my direction and control and that this U.S. Public Land Survey Monument Record is correct and complete to the best of my knowledge and belief.



Michael J. Romportl
Signature

7/11/2017
Date

3904350000 (INDEX NO. Z-21)