

CERTIFIED LAND CORNER RESTORATION

State of Wisconsin }  
County of Oneida } ss.

I, JAMES D. REIN, do hereby certify that on the 7th day of April, 19 81, I found evidence of the North one-quarter corner of Section 12 Township 39 North, Range 5 East, Fourth Principal Meridian, as described hereon; and that from this evidence I established a new monument and accessories as described hereon to perpetuate the original location of this corner:

Description of original monument and accessories and subsequent restorations: September 15th, 1863 - Alex. Anderson, Deputy surveyor - set wood post, witnessed by a White Pine 6" S30°W, 121 lks (79.86 feet) and by a Black Oak 7" N46°W, 66 lks (43.56 feet).

March, 1964 - James G. Griffin, R.L.S. legends corner being monumented by a concrete monument with brass cap, witnessed by an 18" Norway Pine N37°E, 2.9 feet and by an 18" Norway Pine S38°E, 8.5 feet.

Description of corner evidence found:

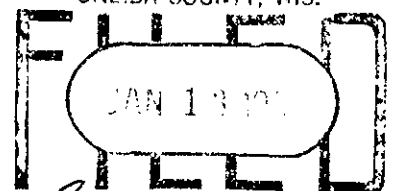
5" x 5" concrete monument up 1-1/2 feet with "X" on top +/- 100 feet west of swamp, witnessed by a 17" Norway Pine N32°E, 2.9 feet, by a 21" Norway Pine S42°E, 8.5 feet and by a 30" White Pine S4°W, 60.2 feet.

A 14" Oak stub windblown bears N46°W, 43.56 feet, inside of tree is rotted, no scribing visible.

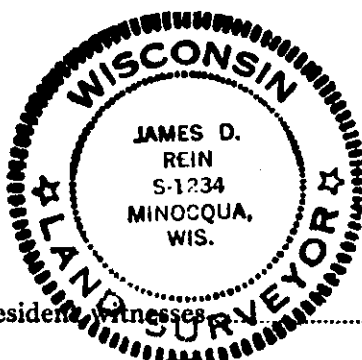
Description of monument and accessories I established to perpetuate the location of this corner:

Set P. K. nails in existing bearing trees  
17" Norway Pine N32°E, 2.90 feet  
21" Norway Pine S42°E, 8.23 feet  
30" White Pine S4°W, 59.50 feet

REGISTER OF DEEDS OFFICE  
ONEIDA COUNTY, WIS.



At 8:00 O'Clock a.m.  
DORIS VERAGE KUEHN  
REGISTER OF DEEDS



Residence of witnesses

Dated at Minocqua Wisconsin, this 11th day of May 19 81.

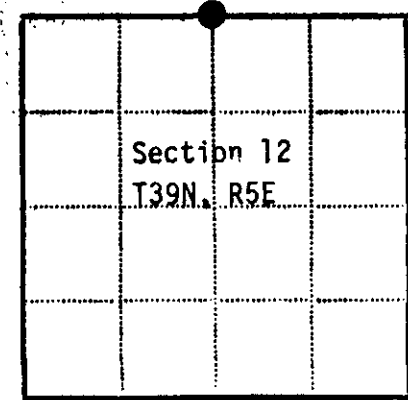
Signature James D. Rein Title Reg. Land Surveyor  
(County Surveyor, Registered Land Surveyor, or other duly authorized official)

Surveyors Registration No. S-1234

Office of County of

I hereby certify that the within instrument was filed in this office for record on the day of 19, and was filed in Book No. Page No. of County Records.

Signature Title



● - Corner monument restored  
□ -

Township, Range, Section, Index No., Page No.

1-20

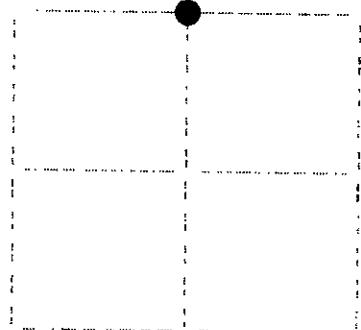
**U. S. PUBLIC LAND SURVEY MONUMENT RECORD**

Note: This form is intended and designed to fulfill all requirements of Wisconsin Administrative Code, Chapter A-E 7.09 U.S. Public Land Survey Monument Record(3)(a)(b)(c)(d)(e)(f)(g)(h)(i). An additional sheet may be added if necessary to conform with said requirements.

(a) Corner location: Township 39 North  
Range 5 East

Town of Minocqua

Oneida County, Wisconsin



**Section 12**

(b)(f)(g)(h) Description of monument found at this corner and if it was accepted, state all evidence (material, testimonial, occupational, plats, records, other monuments) used as a basis for accepting. If not accepted or if nothing was found, state evidence used as basis for establishing location. If reestablished through lost corner proportionate methods, indicate all monuments, distances and directions used to establish. Indicate type of monument found or set and sign post.

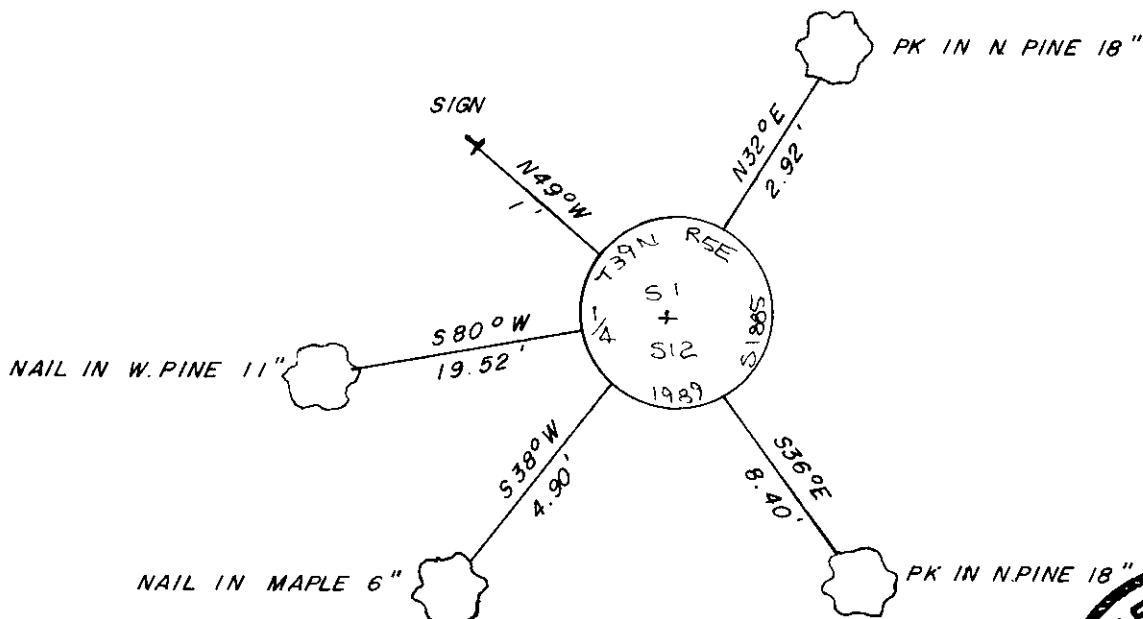
September, 1863: Alexander Anderson set a wood post: W.Pine 6" S50-1/2°W, 121 lks., Black Oak 7" N46-1/2°W, 66 lks.

March, 1964: Northwoods Surveyors section subdivision shows corner as concrete monument: N.Pine 18" N37°E, 2.9', N.Pine 18" S38°E, 5.5'.

January 28, 1983: Map C-131 by Wilderness Surveying shows corner as 5" square concrete monument: set PKs: N.Pine 17" N32°E, 2.90', N.Pine 21" S42°E, 8.23', W.Pine 30" S4°W, 59.50'.

November 16, 1989: I found and accepted a 5" sq. 42" long concrete monument and replaced monument with 2-1/2" dia. 30" long aluminum pipe with 3-1/4" dia. aluminum tablet stamped as shown below. I also set a DEEP 1 magnet below the monument. I established the following witnesses: found PK in N.Pine 18" N32°E, 2.92', found PK in N.Pine 18" S36°E, 8.40', set nail in Maple 6" S38°W, 4.90', set nail in W.Pine 11" S80°W, 19.52', set plastic sign post N49°W, 1 foot.

(c)(d)(e) Plan view of corner with ties to at least four witness monuments. If in disagreement with previously established corner, show the distances between the two corners and also indicate the ties to the disputed corner.



I, Jeffrey W. Austin, Registered Land Surveyor S-1885 certify that the corner location on this record was determined by me or under my direction and control and that this U.S. Public Land Survey Monument Record is correct and complete to the best of my knowledge and belief.



INDEX NO. E-23

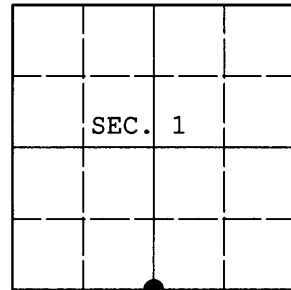
Signature: *[Handwritten Signature]* Date: **JANUARY 23, 1990**

3905010020

**U.S. PUBLIC LAND SURVEY MONUMENT RECORD**

Note: This form is intended and designed to fulfill all requirements of Wisconsin Administrative Code, Chapter A-E 7.08 U.S. Public Land Survey Monument Record (3) (a) (b) (c) (d) (e) (f) (g) (h) (i). An additional sheet may be added if necessary to conform with said requirements.

(a) CORNER LOCATION: WISCRS (Oneida County)  
1/4 Cor. of Secs. 1 & 12 N: 256,842.927 USft  
Township 39 North E: 163,149.764 USft  
Range 5 East of the 4th P.M. Datum: NAD 1983(2007)  
Town of Minocqua County of Oneida



(b) HISTORY OF ORIGINAL CORNER ESTABLISHMENT

Original Surveyor: Alexander Anderson Original Accessories:  
Date of Survey: Commenced: Sept. 15, 1863 w. pine 6" S30-1/2°W, 121 lks.  
Completed: Sept. 20, 1863 b. oak 7" N46-1/2°W, 66 lks.

(b) (f) (g) (h) Description of monument found at this corner and if it was accepted, state all evidence (material, testimonial, occupational, plats, records, other monuments) used as a basis for accepting. If not accepted or if nothing was found, state evidence used as basis for establishing location. If re-established through lost corner proportionate methods, indicate all monuments, distances and directions used to establish. Indicate type of monument and sign post found or set.

NOTE: This is a perpetuation of a previous USPLS Monument Record by Jeffrey W. Austin, RLS dated January 23, 1990 and filed in the office of the Oneida County Register of Deeds. A complete history of the corner can be found on the previous monument record. I accept the previous location as a true and faithful perpetuation or reestablishment of the original corner location and further perpetuate it as follows.

March 4, 2013: I found and accepted my monument, a 2-1/2" diam. Oneida Co. aluminum monument. My accessories were found in substantial agreement with my previous record and were not remeasured as the sole purpose of this work is to report the coordinates of the corner point.

The coordinates shown were derived from offset static GPS observations referenced to a VRS control point generated by the WISCORS network.

(c) (d) (e) Plan view of corner with ties to at least 4 witness monuments. If in disagreement with previously established corner, show the distances between the two corners and also indicate the ties to the disputed.

REGISTER OF DEEDS OFFICE  
ONEIDA COUNTY  
FILED

APR 11 2013

AT \_\_\_\_\_ O'CLOCK \_\_\_\_\_ M  
KYLE J. FRANSON  
REGISTER OF DEEDS

(i) I, Jeffrey W. Austin, Registered Land Surveyor No. S-1885, hereby certify that the corner location on this record was determined by me or under my direction and control and that this U.S. Public Land Survey Monument Record is correct and complete to the best of my knowledge and belief.



Signature

Date

MAR 26, 2013