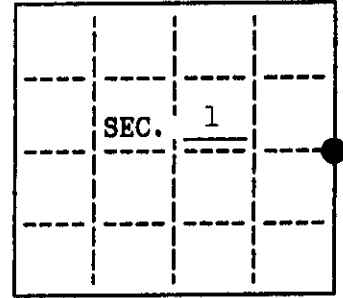


U.S. PUBLIC LAND SURVEY MONUMENT RECORD

Note: This form is intended and designed to fulfill all requirements of Wisconsin Administrative Code, Chapter A-B 7.08 U.S. Public Land Survey Monument Record (3)(a)(b)(c)(d)(e)(f)(g)(h)(i). An additional sheet may be added if necessary to conform with said requirements.

(a) CORNER LOCATION: State Plane Coordinates
 E 1/4 corner of Sec. 1 X _____
 Township 39 North Y _____
 Range 5 East Datum Base _____
 Town/City Minocqua County of Oneida



(b) HISTORY OF ORIGINAL CORNER ESTABLISHMENT
 Original Surveyor: Alfred Millard
 Date of Survey: Commenced Sept. 1860
 Completed Sept. 1860

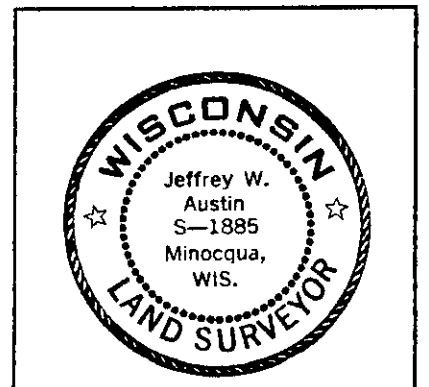
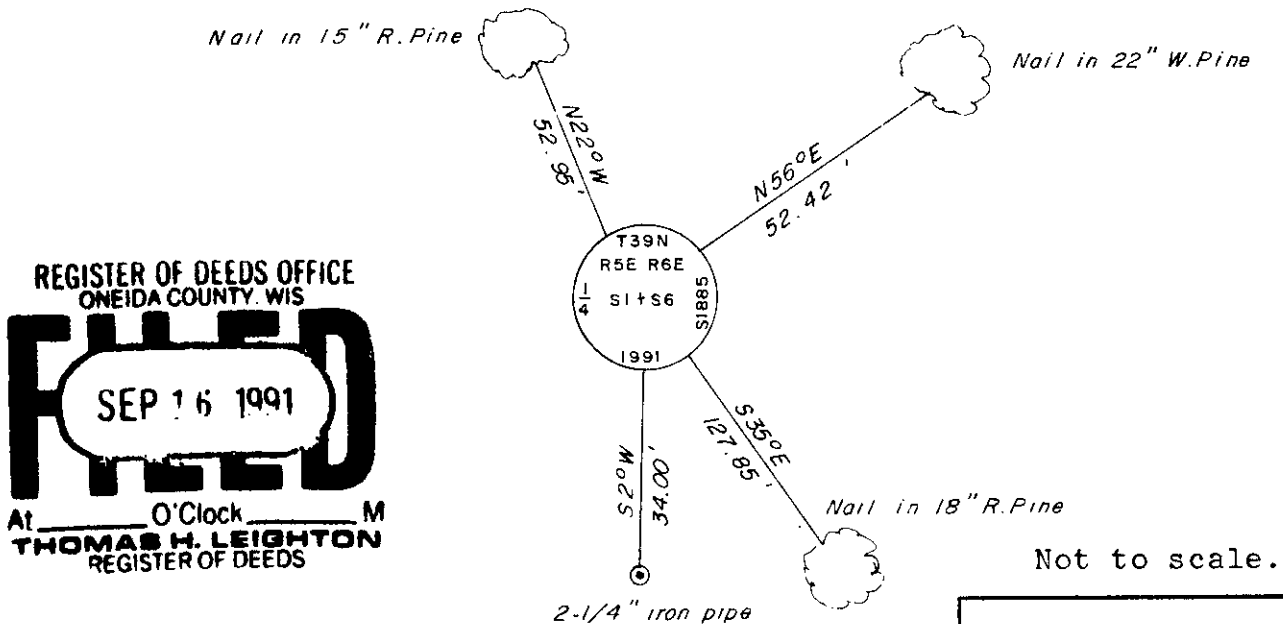
Original B.T.'s

W.Pine 24 N28°W, 80 lks.
 Y.Pine 24 S37°E, 168 lks.

(b)(f)(g)(h) Description of monument found at this corner and if it was accepted, state all evidence (material, testimonial, occupational, plats, records, other monuments) used as a basis for accepting. If not accepted or if nothing was found, state evidence used as basis for establishing location. If reestablished through lost corner proportionate methods, indicate all monuments, distances and directions used to establish. Indicate type of monument and sign post found or set.

See reverse...

(c)(d)(e) Plan view of corner with ties to at least 4 witness monuments. If in disagreement with previously established corner, show the distances between the two corners and also indicate the ties to the disputed.



INDEX NO. C-25

(i) I, Jeffrey W. Austin, Registered Land Surveyor hereby certify that the corner location on this record was determined by me or under my direction and control and that this U.S. Public Land Survey Monument Record is correct and complete to the best of my knowledge and belief.

Signature [Handwritten Signature] Date 9-13-1991

3905012000

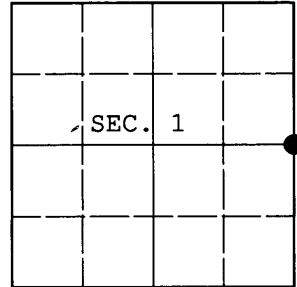
1964: Plat of Rockwood Estates Div. 2 by James G. Griffin, 5" round concrete monument 30" long.

September 1, 1991: I found and accepted a 6" dia. broken off concrete monument 2' North of the centerline of Warrior Drive. I replaced this monument with a 2-1/2" dia. 30" long aluminum pipe with a 3-1/4" dia. Oneida Co. aluminum cap set 12" below the road grade. I also set a DEEP-1 magnet below the new monument. I found the following witnesses: (Millard) Pine stump S37°E, 109.0 feet; 2-1/4" dia. iron pipe S2°W, 34.00 feet (set plastic sign post at this pipe). I established the following witnesses: set nail in W.Pine 22" N56°E, 52.42 feet; set nail in R.Pine 18" S35°E, 127.85 feet; set nail in R.Pine 15" N22°W, 52.95 feet (it appears this tree may be growing in the GLO stump hole).

U.S. PUBLIC LAND SURVEY MONUMENT RECORD

Note: This form is intended and designed to fulfill all requirements of Wisconsin Administrative Code, Chapter A-E 7.08 U.S. Public Land Survey Monument Record (3) (a) (b) (c) (d) (e) (f) (g) (h) (i). An additional sheet may be added if necessary to conform with said requirements.

(a) CORNER LOCATION: Plane Coordinates
 1/4 Cor. of Secs. 1 & 6 N:
 Township 39 North E:
 Range 5 & 6 East of the 4th P.M. Datum:
 Town of Minocqua County of Oneida



(b) HISTORY OF ORIGINAL CORNER ESTABLISHMENT

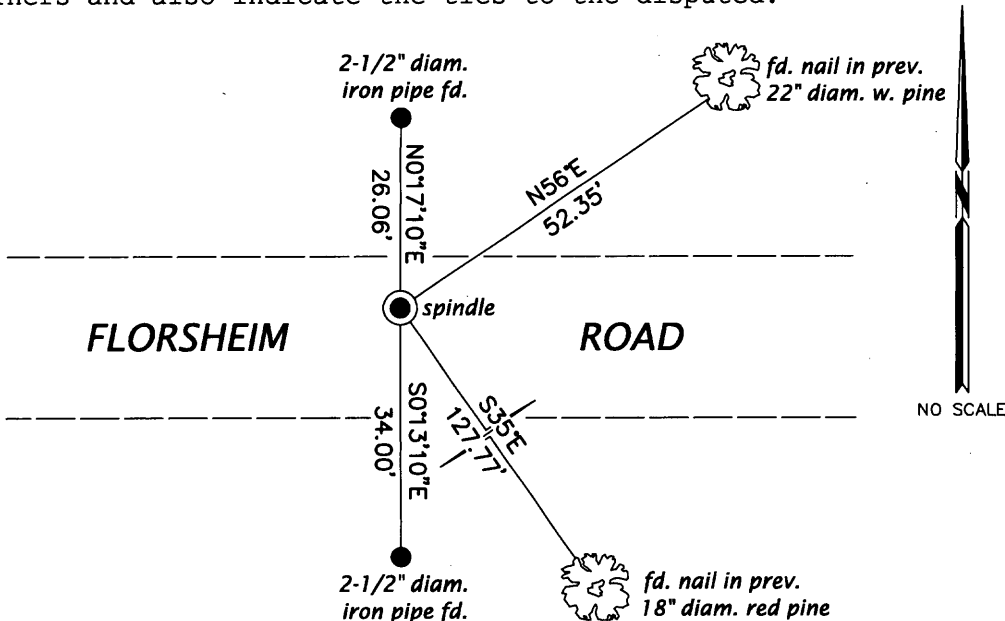
Original Surveyor: Alfred Millard Original Accessories:
 Date of Survey: Commenced: Sept., 1860 w. pine 24" N28°W, 80 lks.
 Completed: Sept., 1860 y. pine 24" S37°E, 168 lks.

(b) (f) (g) (h) Description of monument found at this corner and if it was accepted, state all evidence (material, testimonial, occupational, plats, records, other monuments) used as a basis for accepting. If not accepted or if nothing was found, state evidence used as basis for establishing location. If re-established through lost corner proportionate methods, indicate all monuments, distances and directions used to establish. Indicate type of monument and sign post found or set.

NOTE: This is a perpetuation of a previous USPLS Monument Record by Jeffrey W. Austin, RLS dated September 13, 1991 and filed in the office of the Oneida County Register of Deeds. A complete history of the corner can be found on the previous monument record. I accept the previous location as a true and faithful perpetuation or reestablishment of the original corner location and further perpetuate it as follows.

August 16, 2012: Over my previous monument, I set a cotton picker spindle 4 ft. North of the pavement centerline of Florsheim Road. I found or established accessories as shown below and found a white plastic sign post adjacent to the southerly reference monument.

(c) (d) (e) Plan view of corner with ties to at least 4 witness monuments. If in disagreement with previously established corner, show the distances between the two corners and also indicate the ties to the disputed.




REGISTER OF DEEDS OFFICE
 ONEIDA COUNTY
 FILED

MAR 11 2013

AT _____ O'CLOCK _____ M
 KYLE J. FRANSON
 REGISTER OF DEEDS

(i) I, Jeffrey W. Austin, Registered Land Surveyor No. S-1885, hereby certify that the corner location on this record was determined by me or under my direction and control and that this U.S. Public Land Survey Monument Record is correct and complete to the best of my knowledge and belief.

Signature  Date FEB. 27, 2013