

CERTIFIED LAND CORNER RESTORATION

State of Wisconsin }
County of ONEIDA } ss.

I JAMES D. REIN, do hereby certify that on the 7th day of April, 1981, I found evidence of the northwest corner of Section 12 Township 39 North, Range 5 East, Fourth Principal Meridian, as described hereon; and that from this evidence I established a new monument and accessories as described hereon to perpetuate the original location of this corner:

Description of original monument and accessories and subsequent restorations:

September 15th, 1863 - Alex Anderson, Deputy Surveyor, set wood post witnessed by a White Pine 12", N69°W, 20 lks (13.20 feet) and by a Birch 10", S64°E, 18 lks (11.88 feet)

September 9th, 1938 - Plat of Bellewood - L. G. Gaartz, Surveyor, shows corner in centerline of Town Road, witnessed by a 6" x 6" x 36" concrete monument 12 feet south
March, 1964 - James G. Griffin, R.L.S. map legends corner being monumented by square concrete monument.

December, 1970 - William S. Cameron, R.L.S. survey map in Section 11 legends corner as being monumented by an axle shaft witnessed by a concrete monument S1°-06'W, 12.0 feet.

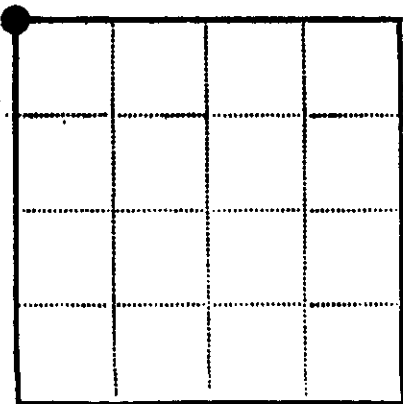
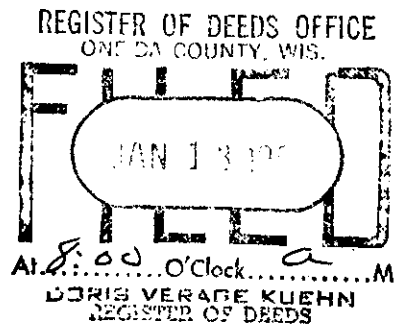
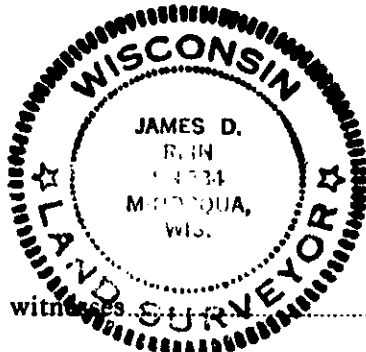
Description of corner evidence found:

1-1/4" diameter spline iron shaft, down 6" in gravel roadbed +/- six feet south of existing centerline under a north-south power line. A 5" x 5" concrete monument up two feet, bears S1°-09'W, 11.94 feet.

Description of monument and accessories I established to perpetuate the location of this corner:

Made bearing trees (unscribed) with P.K. Nail set in lower blaze as follows:

- 11" Oak N51°E, 58.95 feet
- 10" White Pine, N21°W, 25.02 feet



● - Corner monument restored
□ -

Resident witnesses.....

Dated at Minocqua Wisconsin, this 11th day of May 19.....

Signature *James D. Rein* Title Reg. Land Surveyor
(County Surveyor, Registered Land Surveyor, or other duly authorized official)

Surveyors Registration No. S-1234.....

Office of..... County of.....

I hereby certify that the within instrument was filed in this office for record on the..... day of..... 19....., and was filed in Book No..... Page No..... of County Records.

Signature..... Title.....

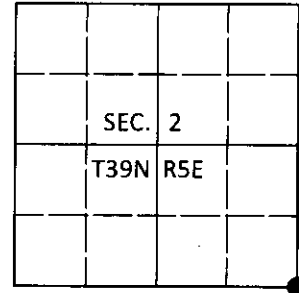
Township....., Range....., Section....., Index No....., Page No.....

U.S. PUBLIC LAND SURVEY MONUMENT RECORD

Note: This form is intended and designed to fulfill all requirements of Wisconsin Administrative Code, Chapter A-E 7.08 U.S. Public Land Survey Monument Record (3)(a-i).

(a) CORNER LOCATION
 Cor. of Secs. 1, 2, 11 & 12
 Township 39 North
 Range 5 East of the 4th P.M.
 Town of Minocqua
 County of Oneida

WISCORS - Oneida County
 N: 256,726.19 USft
 E: 160,491.11 USft
 Datum: NAD 83(2011)
 GNSS Method: RTN - Direct
 GNSS Control: WISCORS VRS



(b) HISTORY OF ORIGINAL CORNER ESTABLISHMENT

Original Surveyor: _____ Original Accessories: _____
 Date of Survey Commenced: _____ See previous USPLS Monument Record
 Completed: _____

(b)(f)(g)(h) Description of monument found at this corner and if it was accepted, state all evidence (material, testimonial, occupational, plats, records, other monuments) used as a basis for accepting. If not accepted or if nothing was found, state evidence used as basis for establishing location. If re-established through lost corner proportionate methods, indicate all monuments, distances and directions used to establish. Indicate type of monument and sign post found or set.

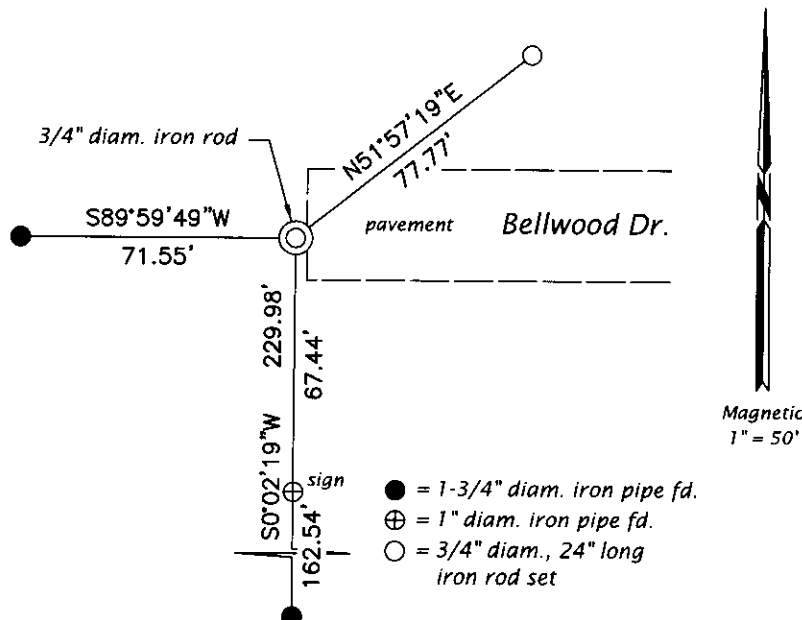
This is a perpetuation of a previous USPLS Monument Record by James D. Rein, RLS dated May 11, 1981 and filed in the office of the Oneida County Register of Deeds. A complete history of the corner can be found on the previous monument record. I accept the previous location as a true and faithful perpetuation or reestablishment of the original corner location and further perpetuate it as follows.

September 16, 2005: OCS Map No. A-1612 by Stuart L. Foltz identifies corner as monumented with a 1-1/4" diam. axle shaft.

August 29, 2018: I was unable to locate a monument at the corner point. I established the corner from the monumentation of OCS Map No. A-1612 as shown below. At the corner point, I set a 3/4" diam., 24" long iron rod buried 8" beneath and 3 ft. West of the end of pavement. I found or established accessories as shown below.

The coordinate value shown has been verified by at least one of the following methods: 1) comparison to a previously GPS determined published value; 2) the value is the average of two or more GPS observations at a markedly different time; 3) one or more distances were measured back to the GPS observed corner from temporary GPS observed offset locations.

(c)(d)(e) Plan view of corner with ties to at least 4 witness monuments. If in disagreement with previously established corner, show the distances between the two corners and also indicate the ties to the disputed.



REGISTER OF DEEDS OFFICE
 ONEIDA COUNTY
 FILED

SEP 10 2018

KYLE J. FRANSON
 REGISTER OF DEEDS

(i) I, Jeffrey W. Austin, Professional Land Surveyor No. S-1885, hereby certify that the corner location on this record was determined by me or under my direction and control and that this U.S. Public Land Survey Monument Record is correct and complete to the best of my knowledge and belief.

[Handwritten Signature]
 Signature

SEP. 5, 2018
 Date