

At _____ O'Clock _____ M
THOMAS H. LEIGHTON
REGISTER OF DEEDS

U. S. PUBLIC LAND SURVEY MONUMENT RECORD

Note: This form is intended and designed to fulfill all requirements of Wisconsin Administrative Code-Chapter A-E 7.08 U. S. Public Land Survey Monument Record (3)(a)(b)(c)(d)(e)(f)(g)(h)(i). An additional sheet may be added if necessary to conform with said requirements.

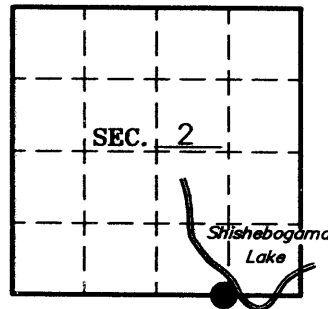
(a) CORNER LOCATION: State Plane Coordinates

Meander corner of Sec. 2 X _____

Township 39 North Y _____

Range 5 East Datum Base _____

Town Minocqua County of Oneida



(b) HISTORY OF ORIGINAL CORNER ESTABLISHMENT: Original B.T.'S

Original Surveyor: Alex Anderson

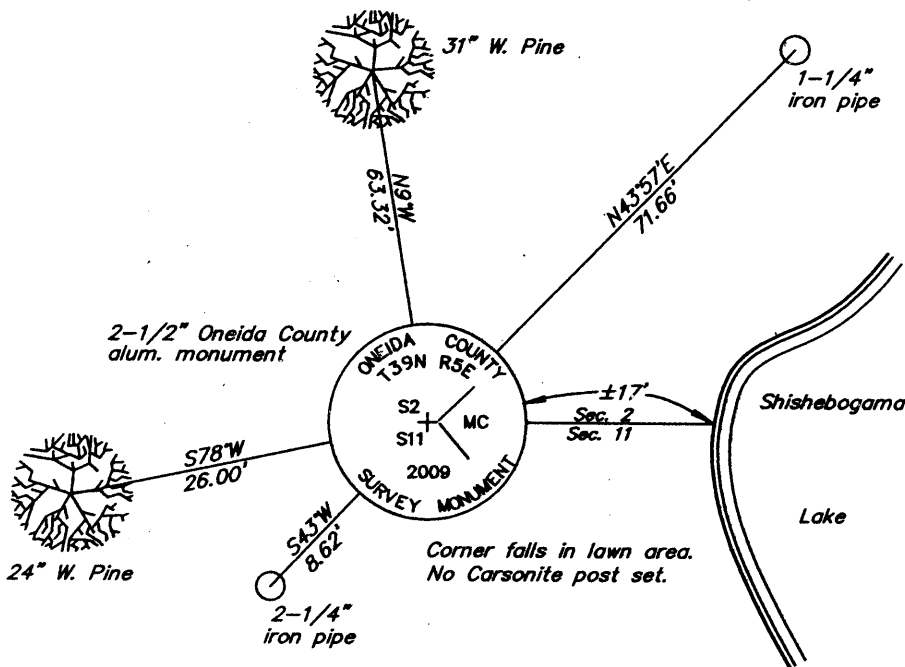
Date of Survey: Commenced Sept. 1863
Completed Sept. 1863

8" Tamarack, S50°W, 372 lks.
No other near

(b)(f)(g)(h) Description of monument found at this corner and if it was accepted—state all evidence (material—testimonial—occupation—plats—records—other monuments) used as a basis for accepting. If not accepted or if nothing was found state evidence used as basis for establishing location. If reestablished through lost corner proportionate methods indicate all monuments—distances and directions used to establish. Indicate type of monument and sign post found or set.

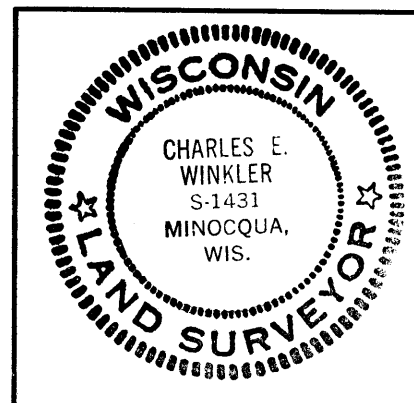
- 1863 – Alex Anderson, Deputy Surveyor, set Meander post.
- 1956 & 1957 – E.F. Kowalke, on various surveys, shows an iron pipe at the Meander Corner location. He also shows N76°45'W, 56' to the SE corner of a dwelling and a BT: 22" W. Pine, S1°W, 61.5'.
- 1971 – John Margitan shows an iron pipe found in place at the Meander Corner location, see Oneida County Surveyor's File #L83. He also shows an iron pipe S44°45'W, 8.5' from the Meander Corner.
- 2009 – We found and accepted a 1-1/2" iron pipe at the corner location in an improved lawn area. Kowalke's BT now gone. We also found the iron pipe shown on the Margitan survey, 2-1/4" dia., S43°W, 8.62' from Meander Corner. We set a 2-1/2" Oneida County alum. monument over the 1-1/2" iron pipe. See sketch below for ties.

(c)(d)(e) Plan view of corner with ties to at least 4 witness monuments. If in disagreement with previously established corner—show the distances between the two corners and also indicate the ties to the disputed.



(i) I Charles E. Winkler S-1431 hereby certify that the corner location on this record was determined by me or under my direction and control and that this U.S. Public Land Survey Monument Record is correct and complete to the best of my knowledge and belief.

Signature Charles E. Winkler 12/15/2009
Foltz and Associates, Inc. Date



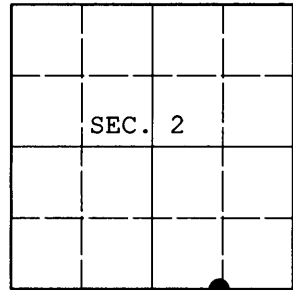
INDEX NO. E 19-20

3905020011

U.S. PUBLIC LAND SURVEY MONUMENT RECORD

Note: This form is intended and designed to fulfill all requirements of Wisconsin Administrative Code, Chapter A-E 7.08 U.S. Public Land Survey Monument Record (3) (a) (b) (c) (d) (e) (f) (g) (h) (i). An additional sheet may be added if necessary to conform with said requirements.

(a) CORNER LOCATION: WISCORS (Oneida County)
 Meander Cor. of Secs. 2 & 11 N: 256,696.377 USft
 Township 39 North E: 158,959.840 USft
 Range 5 East of the 4th P.M. Datum: NAD 1983(2007)
 Town of Minocqua County of Oneida



(b) HISTORY OF ORIGINAL CORNER ESTABLISHMENT

Original Surveyor: Alexander Anderson Original Accessories:
 Date of Survey: Commenced: Sept. 15, 1863 tamarack 8" S50°W, 372 lks.
 Completed: Sept. 20, 1863 no other tree near

(b) (f) (g) (h) Description of monument found at this corner and if it was accepted, state all evidence (material, testimonial, occupational, plats, records, other monuments) used as a basis for accepting. If not accepted or if nothing was found, state evidence used as basis for establishing location. If re-established through lost corner proportionate methods, indicate all monuments, distances and directions used to establish. Indicate type of monument and sign post found or set.

NOTE: This is a perpetuation of a previous USPLS Monument Record by Charles E. Winkler, RLS dated December 15, 2009 and filed in the office of the Oneida County Register of Deeds. A complete history of the corner can be found on the previous monument record. I accept the previous location as a true and faithful perpetuation or reestablishment of the original corner location and further perpetuate it as follows.

March 4, 2013: I found and accepted Winkler's monument, a 2-1/2" diam. Oneida Co. aluminum monument. Winkler's accessories were found in substantial agreement with his previous record and were not remeasured as the sole purpose of this work is to report the coordinates of the corner point.

The coordinates shown were derived from a static GPS observation referenced to a VRS control point generated by the WISCORS network.

(c) (d) (e) Plan view of corner with ties to at least 4 witness monuments. If in disagreement with previously established corner, show the distances between the two corners and also indicate the ties to the disputed.

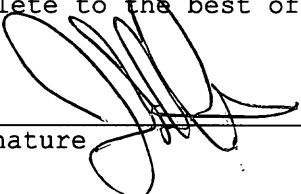
REGISTER OF DEEDS OFFICE
 ONEIDA COUNTY
 FILED

APR 11 2013

AT _____ O'CLOCK _____ M
 KYLE J. FRANSON
 REGISTER OF DEEDS

(i) I, Jeffrey W. Austin, Registered Land Surveyor No. S-1885, hereby certify that the corner location on this record was determined by me or under my direction and control and that this U.S. Public Land Survey Monument Record is correct and complete to the best of my knowledge and belief.



Signature 

MAR 26, 2013

Date

3905020011 (INDEX NO. E-19,20)