

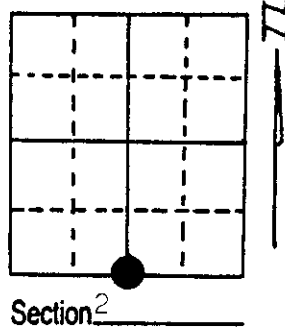
U.S. PUBLIC LAND SURVEY MONUMENT RECORD

Note: This form is intended and designed to fulfill all requirements of Wisconsin Administrative Code, Chapter A-E 5.02, U.S. Public Land Survey Monument Record (3) (a) (b) (c) (d) (e) (f) (g) (h) (i). An additional sheet may be added if necessary to conform with said requirements.

(a) Corner location: Township 39 North
 Range 5 East/West⁺

Town/City/Village Linocqua

County Oneida



(b) (f) (g) (h) Description of monument found at this corner and if it was accepted, state all evidence (material, testimonial, occupational, plats, records, other monuments) used as a basis for accepting. If not accepted or if nothing was found, state evidence used as basis for establishing location. If reestablished through lost corner proportionate methods, indicate all monuments, distances and directions used to establish.

The original Government Survey was performed by Alexander Anderson in 1863.

Wood Post Set:

Aspen 5" S89-1/2°E 2.3 lks.

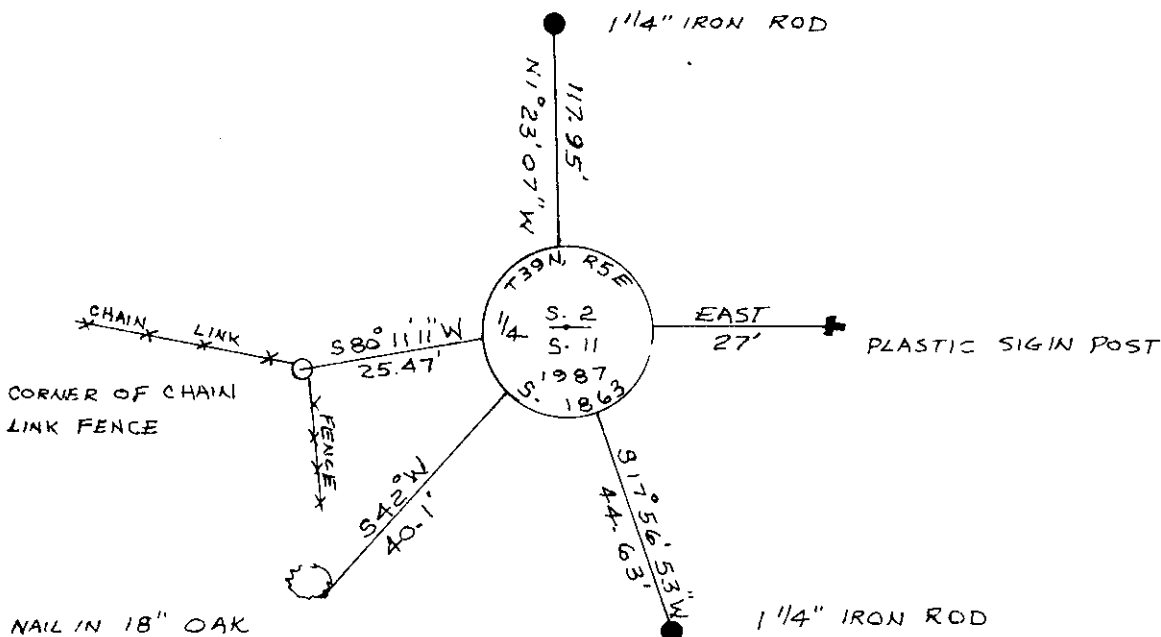
No other trees around

Accepted corner found in place 1" diameter iron rod in the centerline of Finch Road over the top of a 1" square iron rod 2 1/2" below surface of blacktop.

Oak 18' S42°E 40.1 feet
 (James C. Griffin Map)

Replaced with Oneida County 4" diameter breakaway aluminum monument stamped to identify corner.

(c) (d) (e) Plan view of corner with ties to at least 4 witness monuments. If in disagreement with previously established corner, show the distances between the two corners and also indicate the ties to the disputed corner.



REGISTER OF DEEDS OFFICE
 ONEIDA COUNTY, WIS.

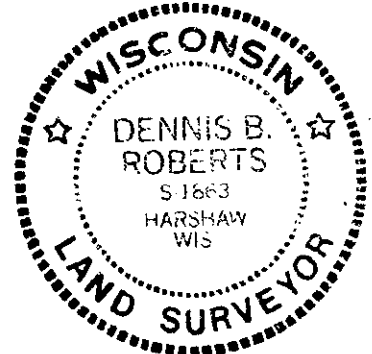
FILED

JUL 23 1987

At 8:00 O'Clock A.M.
 DORIS VERAGE KUEHN
 REGISTER OF DEEDS

(i) I, Dennis E. Roberts
 (type or print name) certify that the corner location on this record was determined by me or under my direction and control and that this U.S. Public Land Survey Monument Record is correct and complete to the best of my knowledge and belief.

Dennis E. Roberts 7/13/87
 Signature Date



3905020020

Index No. E 19