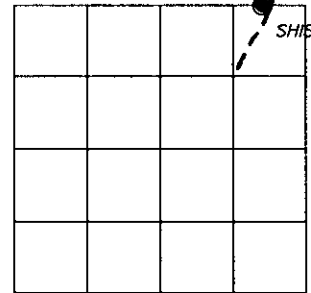


U.S. PUBLIC LAND SURVEY MONUMENT RECORD

Note: This form is intended and designed to fulfill all requirements of Wisconsin Administrative Code, Chapter A-E 7.08 U.S. Public Land Survey Monument Record (3)(a)(b)(c)(d)(e)(f)(g)(h)(i). An additional sheet may be added if necessary to conform with said requirements.

(a) CORNER LOCATION: North Line
 East M.C. corner of Sec. 10
 Township 39 North
 Range 5 East
 Town/~~XXXXXX~~age Minocqua
 County of Oneida

State Plane Coordinates
 X _____
 Y _____
 Datum Base _____



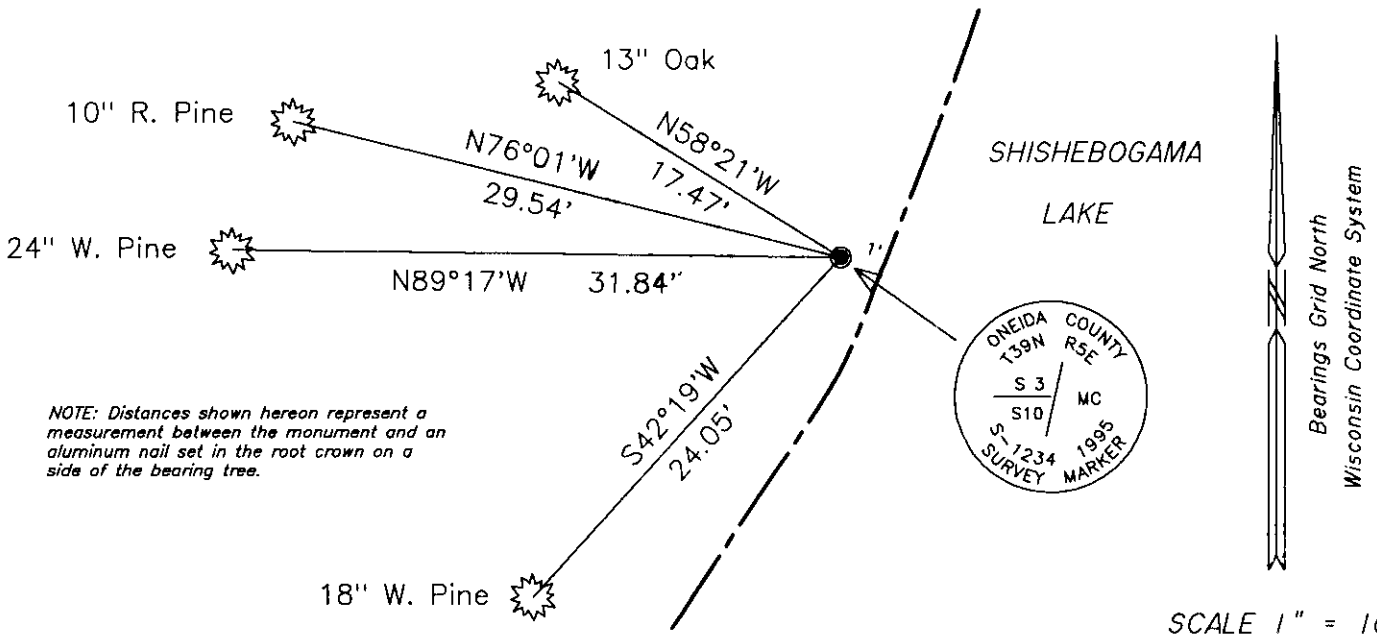
(b) HISTORY OF ORIGINAL CORNER ESTABLISHMENT

Original Surveyor: Alexander Anderson Original B.T.'S SECTION 10
 Date of Survey: Commenced Sept. 15th, 1863 Y. Pine 10" N38 1/5°E, 377 links
 Completed Sept. 20th, 1863 Y. Pine 12" S62°W, 231 links

(f)(g)(h) Description of monument found at this corner and if it was accepted, state all evidence (material, testimonial, occupational, plats, records, other monuments) used as a basis for establishing location. If not accepted of if nothing was found, state evidence used as basis for establishing location. If reestablished through lost corner proportionate methods, indicate all monuments, distances and directions used to establish. Indicate type of monument and sign post found or set.

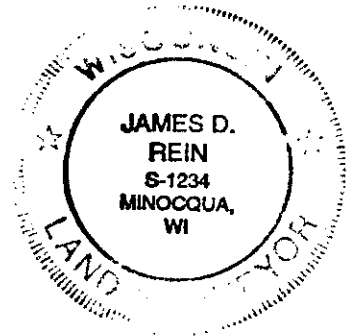
- Dec. 31st, 1914 – D. H. Vaughan, County Surveyor: Found stump and part of trunk of South bearing tree. Post is over 2.00 chains from lake. Found a shortage of 60 links from S 1/4; New BT's Y. Pine 10" N48°W 39 links and Y. Pine 12" N74°W 53 1/2 links.
- Jan. 1st, 1923 – D. S. Burnett, Engineer: Recovered meander corner 1744.4 feet East of 1/4 Corner; Referenced by BT's a W. Pine 12" S45°W, 17 feet and a N. Pine 12" N45°W, 14.3 feet. Corner is 255.6 feet from lake.
- July, 1972 – John H. Fisher, RLS No. 836: Map by Northwoods Surveyors Inc. identifies the meander corner as being an iron pipe set at the intersection of the existing monumented section line with the northwesterly shore of Shishebogama Lake.
- July 31st, 1995 – James D. Rein, RLS No. 1234: Replaced a recovered 2" dia. iron pipe with a capped 2" dia. x 30 long flanged bottom aluminum monument. Placed plastic marker stake adjacent to corner monument and made reference ties as shown in plan view.

(c)(d)(e) Plan view of corner with ties to at least 4 witness monuments. If in disagreement with previously established corner, show the distance between the two corners and also indicate the ties to the disputed corner.



(i) I, James D. Rein, Registered Land Surveyor No. 1234, hereby certify that the corner location on this record was determined by me or under my direction and control and that this U.S. Public Land Survey Monument Record is correct and complete to the best of my knowledge and belief.

James D. Rein August 23rd, 1995
 Signature Date



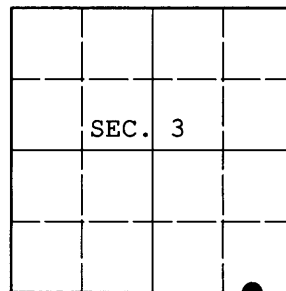
3905030006

INDEX NO. E 16-17

U.S. PUBLIC LAND SURVEY MONUMENT RECORD

Note: This form is intended and designed to fulfill all requirements of Wisconsin Administrative Code, Chapter A-E 7.08 U.S. Public Land Survey Monument Record (3) (a) (b) (c) (d) (e) (f) (g) (h) (i). An additional sheet may be added if necessary to conform with said requirements.

(a) CORNER LOCATION: WISCRS (Oneida County)
Meander Cor. of Secs. 3 & 10 N: 256,722.850 USft
Township 39 North E: 154,494.174 USft
Range 5 East of the 4th P.M. Datum: NAD 1983(2007)
Town of Minocqua County of Oneida



(b) HISTORY OF ORIGINAL CORNER ESTABLISHMENT

Original Surveyor: Alexander Anderson Original Accessories:
Date of Survey: Commenced: Sept. 15, 1863 y. pine 10" N38-1/2°E, 377 lks.
Completed: Sept. 20, 1863 y. pine 12" S62°W, 231 lks.

(b) (f) (g) (h) Description of monument found at this corner and if it was accepted, state all evidence (material, testimonial, occupational, plats, records, other monuments) used as a basis for accepting. If not accepted or if nothing was found, state evidence used as basis for establishing location. If re-established through lost corner proportionate methods, indicate all monuments, distances and directions used to establish. Indicate type of monument and sign post found or set.

NOTE: This is a perpetuation of a previous USPLS Monument Record by James D. Rein, RLS dated August 23, 1995 and filed in the office of the Oneida County Register of Deeds. A complete history of the corner can be found on the previous monument record. I accept the previous location as a true and faithful perpetuation or reestablishment of the original corner location and further perpetuate it as follows.

March 5, 2013: I found and accepted Rein's monument, a 2-1/2" diam. Oneida Co. aluminum monument. Rein's accessories were found in substantial agreement with his previous record and were not remeasured as the sole purpose of this work is to report the coordinates of the corner point.

The coordinates shown were derived from a static GPS observation referenced to a VRS control point generated by the WISCORS network.

(c) (d) (e) Plan view of corner with ties to at least 4 witness monuments. If in disagreement with previously established corner, show the distances between the two corners and also indicate the ties to the disputed.

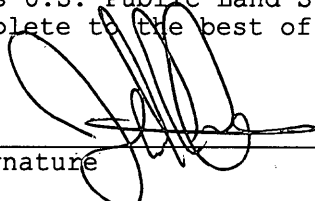
REGISTER OF DEEDS OFFICE
ONEIDA COUNTY
FILED

APR 11 2013

AT _____ O'CLOCK _____ M
KYLE J. FRANSON
REGISTER OF DEEDS

(i) I, Jeffrey W. Austin, Registered Land Surveyor No. S-1885, hereby certify that the corner location on this record was determined by me or under my direction and control and that this U.S. Public Land Survey Monument Record is correct and complete to the best of my knowledge and belief.




Signature

MAR 26, 2013
Date