

Stock No. 26273

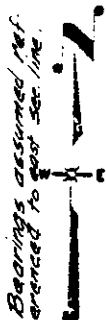
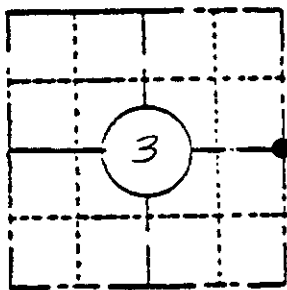
U. S. PUBLIC LAND SURVEY MONUMENT RECORD

INSTRUCTIONS :

This record shall show the location of the corner and shall include all of the following nine elements (a through i).

- (a) Identify the corner by reference to the U.S. public land survey system.

EAST Quarter Corner
Section 3
T39N R5E



LOCATION SKETCH

(Location of landmark indicated by "●")

CORNER HISTORY

Sept 16th, 1863- Alex Anderson, Deputy Surveyor, set one-quarter section post witnessed by-
TAMARACK 12" S76°E, 26 lks (17.16 feet)
WHITE PINE 18" S16°W, 41 lks (27.06 feet)

December 29th, 1914- D. H. Vaughan, Oneida County Surveyor, South from Northeast corner Var. 00 4.60 ch found E-1/4 P. on line, set post from stumps of original trees.

September 5th, 1946- E. F. Kowalke, Surveyor. Record in Field Book No. 4, page 54, in Section 2. NW corner Section 2 South, Var. 2:45 W (D.H. Vaughan Var. 0: in 1914) At 4.66 ch. found the point of D. H. Vaughan's post for 1/4 S. Both original BT's badly rotted and burned. No marks visible. Agree with Government bearing and distance. A Tamarack stump origin unknown bears N84°W, 39.5 feet. Made new BT. White Pine tree 5" S2°E, 15.0 feet.

- (b) Describe any record evidence, monument evidence, occupational evidence, testimonial evidence or any other material evidence you considered, and whether the monument was found or placed.

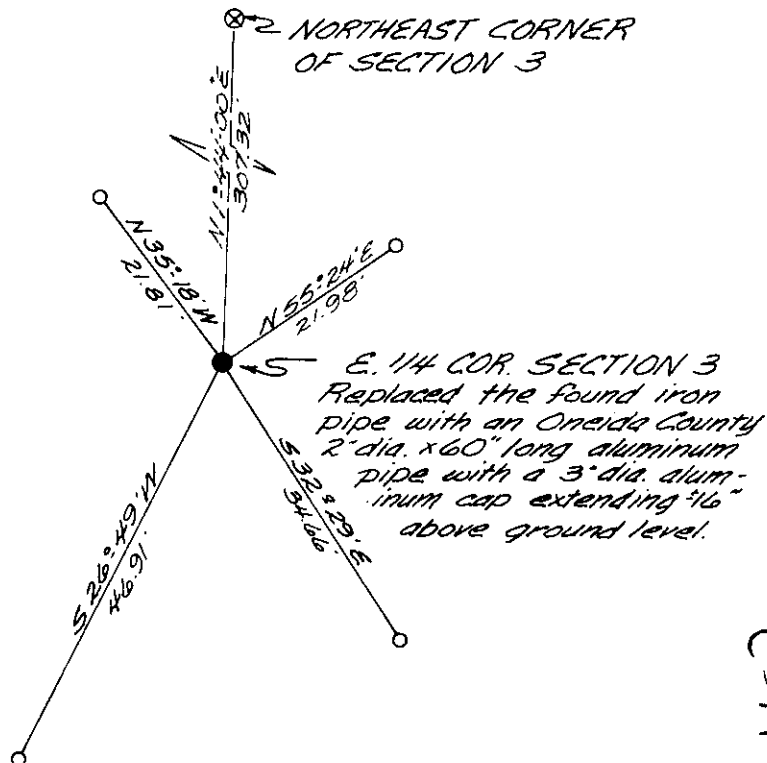
Found a 1-1/2" inside diameter iron pipe and point of wood post, rotted flush above ground in Black Spruce Swamp, 27 feet from southerly edge. Found existing bearing trees:

- 12" White Pine (Kowalke) S1°E, 15.0 feet
- 6" Black Spruce N48°E, 8.6 feet

The existing monumented corner position is located 307.32 feet south of the northeast Section Corner. This distance is harmonious with the Vaughan's and Kowalke's records.

- (c) In the plan view drawing below, provide reference ties to at least 4 witness monuments, or, if the location is within a municipality, to at least 2 witness monuments. (Witness monuments shall be made of concrete, natural stone, iron or other equally durable material, except wood.) Describe witness monuments.

- (d) Show a plan view drawing depicting the relevant monuments and reference ties which is sufficient in detail to enable accurate relocation of the corner monument if the corner monument is disturbed. Indicate north.



Scale 1" = 20'

○ = Reference monument, 3/4" dia. by 24" long iron pipe set.

3905032000

C-17

(e) Describe any material discrepancy between the location of the corner as restored or reestablished and the location of that corner as previously restored or reestablished by distance and direction. Show the discrepancy on the plan view drawing under (d), above. Show the distances between the corner as previously restored or reestablished and (1) the corner as restored or reestablished, and (2) to at least 2 of the witness monuments shown on the drawing in (d), above.

I found no material discrepancy between the found corner position and the record location.

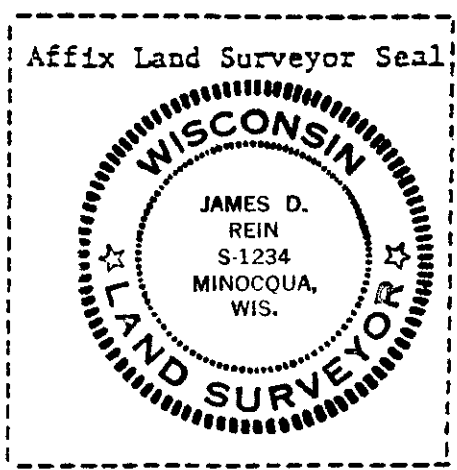
(f) Was the corner restored through acceptance of (1) an obliterated evidence location, or, (2) a found perpetuated location?

This corner position was restored through acceptance of a found perpetuated location.

(g&h) Was the corner reestablished through lost corner proportionate methods? If so, show the method, including the directions and distances to other public land survey corners used as evidence or used for proportioning in determining the corner location?

No.

REGISTER OF DEEDS OFFICE
ONEIDA COUNTY, WIS.
FILED
JUL 11 1986
At 8:00 O'Clock P.M.
DORIS VERAGE KUEHN
REGISTER OF DEEDS



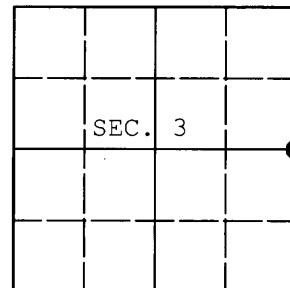
(i) I, JAMES D. REIN, Registered Surveyor No. S-1234
(type or print name) certify that the corner location shown on this record was determined by me or under my direction and control and that this U.S. Public Land Survey Monument Record is correct and complete to the best of my knowledge and belief.

James D. Rein December 30th, 1983
Signature Date

U.S. PUBLIC LAND SURVEY MONUMENT RECORD

Note: This form is intended and designed to fulfill all requirements of Wisconsin Administrative Code, Chapter A-E 7.08 U.S. Public Land Survey Monument Record (3) (a) (b) (c) (d) (e) (f) (g) (h) (i). An additional sheet may be added if necessary to conform with said requirements.

(a) CORNER LOCATION: WISCORS (Oneida County)
1/4 Cor. of Secs. 2 & 3 N: 259,506.44 USft
Township 39 North E: 155,262.81 USft
Range 5 East of the 4th P.M. Datum: NAD 1983(2011)
Town of Minocqua County of Oneida



(b) HISTORY OF ORIGINAL CORNER ESTABLISHMENT

Original Surveyor: Original Accessories:
Date of Survey: Commenced:
Completed:

(b) (f) (g) (h) Description of monument found at this corner and if it was accepted, state all evidence (material, testimonial, occupational, plats, records, other monuments) used as a basis for accepting. If not accepted or if nothing was found, state evidence used as basis for establishing location. If re-established through lost corner proportionate methods, indicate all monuments, distances and directions used to establish. Indicate type of monument and sign post found or set.

NOTE: This is a perpetuation of a previous USPLS Monument Record by James D. Rein, RLS dated December 30, 1983 and filed in the office of the Oneida County Register of Deeds. A complete history of the corner can be found on the previous monument record. I accept the previous location as a true and faithful perpetuation or reestablishment of the original corner location and further perpetuate it as follows.

March 12, 2014: I found and accepted Rein's monument, a 2.5" diam. aluminum monument with Oneida Co. aluminum cap. Rein's accessories were found in substantial agreement with his previous record and were not remeasured as the sole purpose of this work is to report the coordinates of the corner point.

The coordinates shown were derived from a direct RTN GPS observation referenced to the WISCORS network.

(c) (d) (e) Plan view of corner with ties to at least 4 witness monuments. If in disagreement with previously established corner, show the distances between the two corners and also indicate the ties to the disputed.

REGISTER OF DEEDS OFFICE
ONEIDA COUNTY
FILED

MAY 22 2014

AT _____ O'CLOCK _____ M
KYLE J. FRANSON
REGISTER OF DEEDS

(i) I, Jeffrey W. Austin, Registered Land Surveyor No. S-1885, hereby certify that the corner location on this record was determined by me or under my direction and control and that this U.S. Public Land Survey Monument Record is correct and complete to the best of my knowledge and belief.



Signature

Date

3905032000 (INDEX NO. C-17)