

U.S. PUBLIC LAND SURVEY MONUMENT RECORD

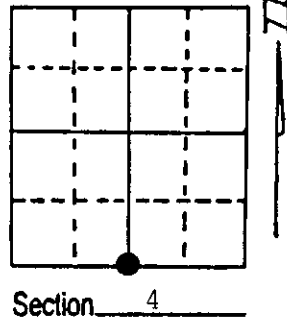
Note: This form is intended and designed to fulfill all requirements of Wisconsin Administrative Code, Chapter A-E 7.08 U.S. Public Land Survey Monument Record (3) (a) (b) (c) (d) (e) (f) (g) (h) (i). An additional sheet may be added if necessary to conform with said requirements.

(a) Corner location: Township 39 North

Range 5 East/West

Town/City/Village Minocqua

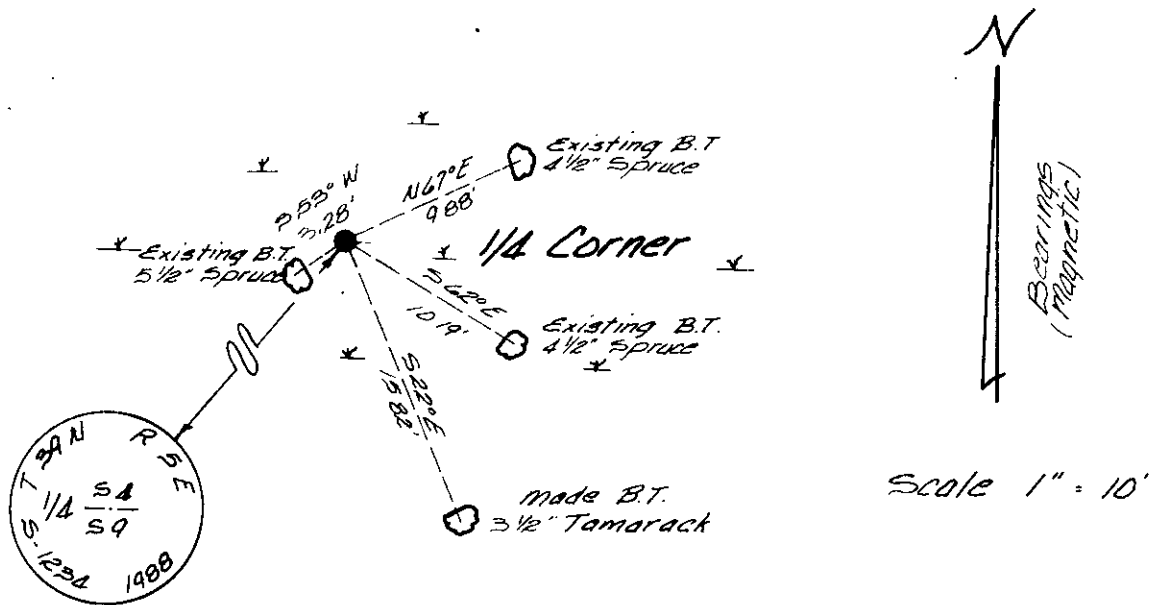
County Oneida



(b) (f) (g) (h) Description of monument found at this corner and if it was accepted, state all evidence (material, testimonial, occupational, plats, records, other monuments) used as a basis for accepting. If not accepted or if nothing was found, state evidence used as basis for establishing location. If reestablished through lost corner proportionate methods, indicate all monuments, distances and directions used to establish.

Sept 1863, Alexander Anderson, (Deputy Surveyor), Set $\frac{1}{4}$ section post.
 Bearing trees: 7" Spruce, N44°E, 5 links and a 7" Yellow Pine, S22°E, 25 links.
 Febuary 1969, William Cameron (Registered Land Surveyor) Map dated Febuary 1969 identifies Corner monumented by an iron pipe found in place.
 Bearing trees: 5" Spruce S62°W, 3.1'; 4" Spruce N63°E, 10.0'.
 October 17, 1988, James D. Rein (Registered Land Surveyor) found a $\frac{3}{4}$ " iron pipe in place witnessed by a 5 $\frac{1}{2}$ " Spruce, S53°W, 3.28'; 4 $\frac{1}{2}$ " Spruce, S62°E, 10.19'; 4 $\frac{1}{2}$ " Spruce, N67°E, 9.88'. Replaced the $\frac{3}{4}$ " iron pipe with a 2" x 60" Oneida County Aluminum piston type monument. Set plastic stake next to corner monument. Made new bearing tree: 3 $\frac{1}{2}$ " Tamarack S22°E, 15.82 feet.

(c) (d) (e) Plan view of corner with ties to at least 4 witness monuments. If in disagreement with previously established corner, show the distances between the two corners and also indicate the ties to the disputed corner.

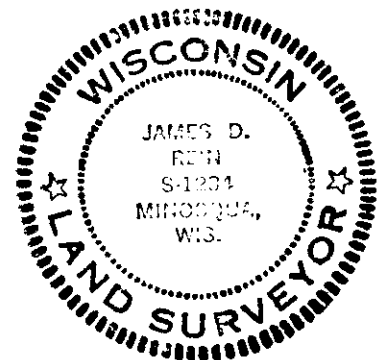


2" Capped Oneida County Aluminum Monument

(i) I, James D. Rein RLS No 1234

(type or print name) certify that the corner location on this record was determined by me or under my direction and control and that this U.S. Public Land Survey Monument Record is correct and complete to the best of my knowledge and belief.

James D. Rein Signature October 29th, 1988 Date



Index No. E-11

3905040020