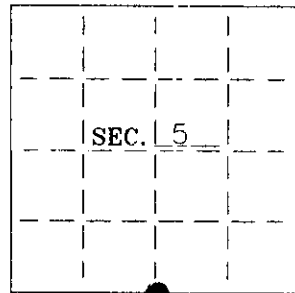


**U. S. PUBLIC LAND SURVEY MONUMENT RECORD**

Note: This form is intended and designed to fulfill all requirements of Wisconsin Administrative Code-Chapter A-E 7.08 U. S. Public Land Survey Monument Record (3)(a)(b)(c)(d)(e)(f)(g)(h)(i). An additional sheet may be added if necessary to conform with said requirements.

(a) CORNER LOCATION: Oneida County Coordinates  
S1/4 corner of Sec. 5 N \_\_\_\_\_  
 Township 39 North E \_\_\_\_\_  
 Range 5 East Datum Base \_\_\_\_\_  
 Town Minocqua County of Oneida



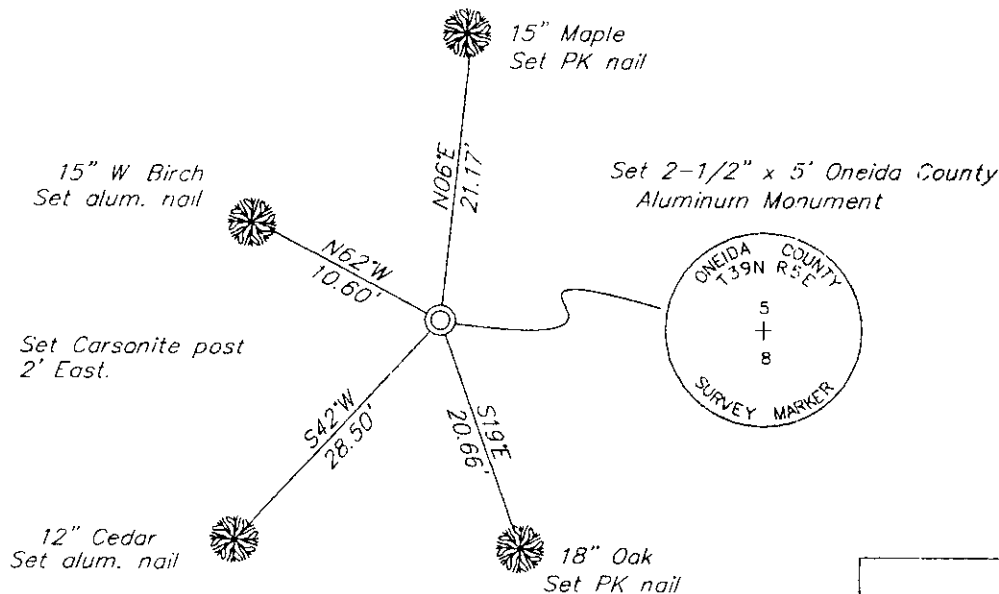
(b) HISTORY OF ORIGINAL CORNER ESTABLISHMENT:  
 Original Surveyor: Alex Anderson  
 Date of Survey: Commenced 1863  
 Completed 1863

Original B.T.'S  
 10" Aspen, S83.5°E, 79 lks  
 No other trees near

(b)(f)(g)(h) Description of monument found at this corner and if it was accepted—state all evidence (material—testimonial—occupation—plats—records—other monuments) used as a basis for accepting. If not accepted or if nothing was found state evidence used as basis for establishing location. If reestablished through lost corner proportionate methods indicate all monuments—distances and directions used to establish. Indicate type of monument and sign post found or set.

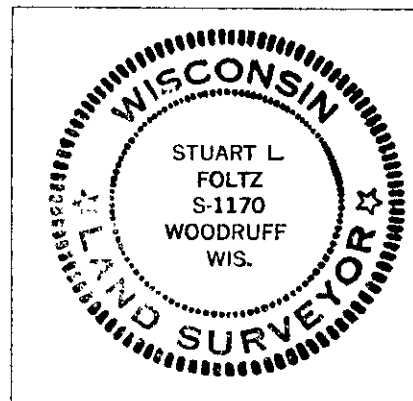
- 1949— F. Wincentsen's field notes indicate he found an iron pipe at the corner location. He found the corner to be 95 lks (62.70'), east of MC on Squirrel Lake. BT's; 14" Birch, N75°W, 15 lks (9.90'), 8" Maple, S80°E, 20.5 lks
- 1960— On a map by E.F. Kowalke dated June 30, 1960, shows an iron pipe at the quarter corner position, 62.5' East of the MC.
- 1979— Wilderness Surveying Inc. shows a 1-1/2" galvanized iron pipe found in place. BT's; 14" W. Birch, N56°W, 10.1', 8" Maple (stump), S64°E, 13.6'. See Oneida County Surveyors' Map #B988.
- 2001— I found and accepted a 1-1/2" iron pipe in place. I did not find the MC on Squirrel Lake 62.5' West, but I found the W. Birch BT noted by Wilderness Surveying. I replaced the iron pipe with an Oneida County Aluminum Monument. See drawing below.

(c)(d)(e) Plan view of corner with ties to at least 4 witness monuments. If in disagreement with previously established corner—show the distances between the two corners and also indicate the ties to the disputed.



(i) I Stuart L. Foltz S-1170  
 hereby certify that the corner location on this record was determined by me or under my direction and control and that this U.S. Public Land Survey Monument Record is correct and complete to the best of my knowledge and belief.

Stuart L. Foltz  
 Signature Foltz and Associates, Inc. Date 1/23/03



INDEX NO. E 7

3905050020