

CERTIFIED LAND CORNER RESTORATION

Index No. C-9

History of original corner establishment:

Original corner post established by Alex Anderson, Deputy Surveyor, on September 14th, 1863.

Original Bearing Trees: White Pine 12" S88°E, 19 links (12.54 feet)
Y. Pine 19" S67°W, 22 links (11.52 feet)

Iron pipe flush found by Gustave R. Erdmann, R.L.S. No. S9019 in 1942. He marked a guard pipe red.

Description of corner evidence found:

3/4" x 22" iron pin inside 1" diameter iron pipe found flush.
A 1-1/4" diameter galvanized iron pipe up 42" painted red
bears Northeast 0.5 feet.

Accepted corner on basis of common report.

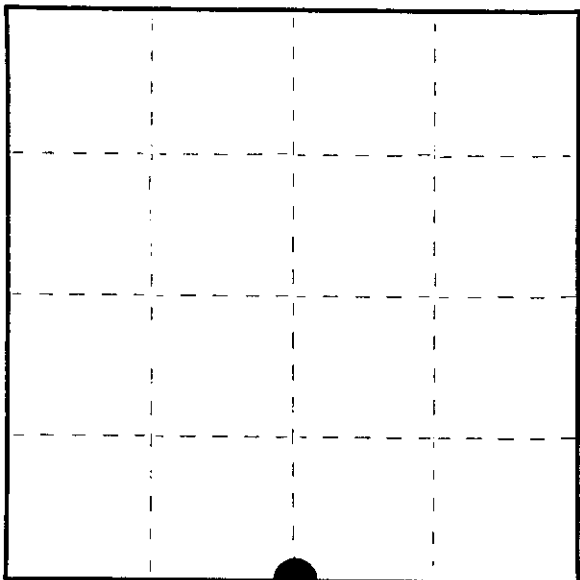
State of Wisconsin }
County of ONEIDA } ss.

I JEROME N. KRAEMER, do hereby certify that on the 20th day of March 19 78, I found evidence of the East One-Quarter corner of Section 5 Township Thirt-Nine (29), North Range 5 East, Fourth Principal Meridian, as described hereon; and that from this evidence I established a new monument and accessories as described hereon to perpetuate the original location of this corner.

Resident witnesses:

None

Section 5, T39N, R5E



● = Corner monument restored.

Description of monument and accessories I established to perpetuate the original location of this corner.

Set Oneida County Survey Marker (Cast aluminum Ferntsen Monument) 3-1/2" Cap, 2" inside diameter and 39" long to replace 1" diameter iron pipe found.
Corner is located 33 feet west of logging road which bears N35°E.

Made Bearing Trees:

Set P.K. nail in face of scribed 1 1/2" White Pine S86°E, 9.08 feet
Set P.K. nail in face of scribed 6" Oak S11°W, 12.04 feet
Set P.K. nail in face of scribed 6" White Pine N69°W, 33.57 feet.

Dated at Minoqua, Wis., this 2nd day of June, 1978

Signature: Jerome N. Kraemer Title: Registered Land Surveyor Registration No. S-11448
(County Surveyor, Registered Land Surveyor, or other duly authorized official)

Office of Register of Deeds, County of Oneida, I hereby certify that the within instrument was filed in this office for record on the 12 day of June, 1986 at 8:00 o'clock A.M.

Signature: David D. ... (Register of Deeds)

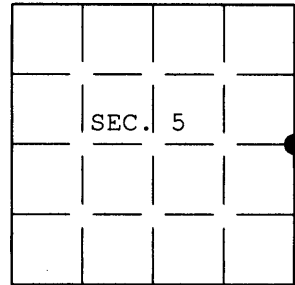
By: Supriana A. ... Deputy

000050503

U.S. PUBLIC LAND SURVEY MONUMENT RECORD

Note: This form is intended and designed to fulfill all requirements of Wisconsin Administrative Code, Chapter A-E 7.08 U.S. Public Land Survey Monument Record (3) (a) (b) (c) (d) (e) (f) (g) (h) (i). An additional sheet may be added if necessary to conform with said requirements.

(a) CORNER LOCATION: Plane Coordinates
 1/4 Cor. of Secs. 4 & 5 X:
 Township 39 North Y:
 Range 5 East of the 4th P.M. Datum:
 Town of Minocqua County of Oneida



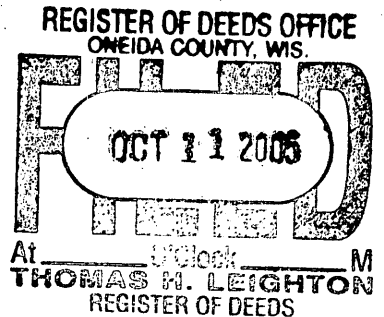
(b) HISTORY OF ORIGINAL CORNER ESTABLISHMENT

Original Surveyor: Alexander Anderson Original Accessories:
 Date of Survey: Commenced Sept. 1863 W. Pine 12" S.88°E., 19 lks.
 Completed Sept. 1863 Y. Pine 10" S.67°W., 22 lks.

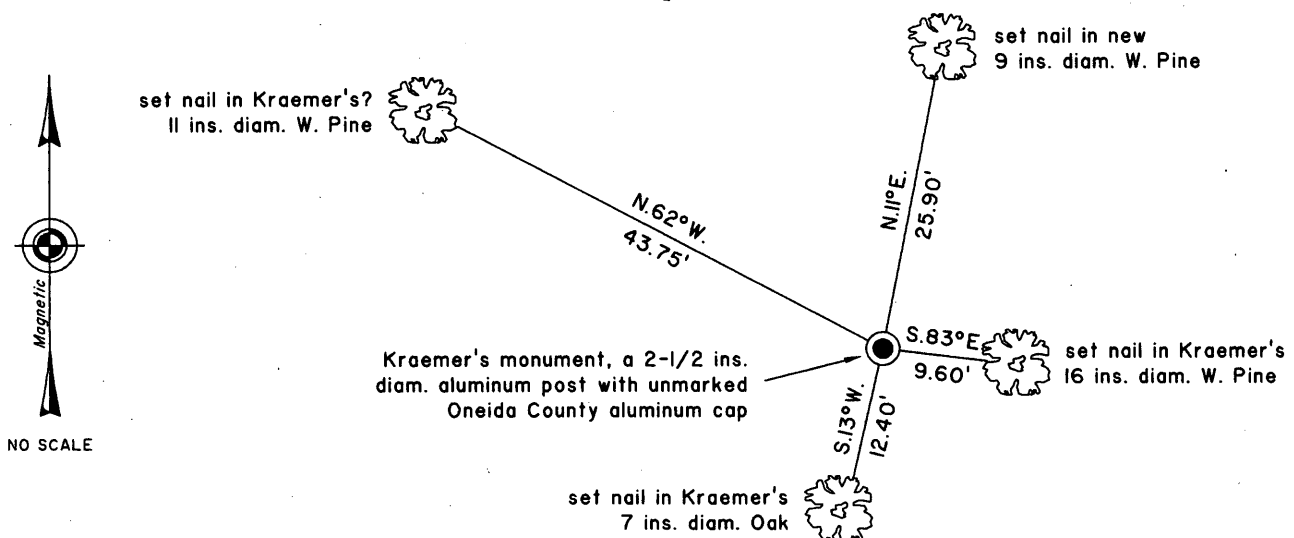
(b) (f) (g) (h) Description of monument found at this corner and if it was accepted, state all evidence (material, testimonial, occupational, plats, records, other monuments) used as a basis for accepting. If not accepted or if nothing was found, state evidence used as basis for establishing location. If re-established through lost corner proportionate methods, indicate all monuments, distances and directions used to establish. Indicate type of monument and sign post found or set.

2 June 1978: USPLS Monument Record prepared by Jerome N. Kraemer and filed in the office of the Oneida County Register of Deeds. Set "Oneida County Survey Marker" based on common report.

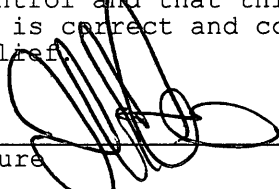
7 May 2005: I found and accepted Kraemer's monument, a 2-1/2 ins. diam. aluminum post with Oneida County aluminum cap projecting 4 ins. above the ground surface. Kraemer's 6 ins. diam. white pine was possibly mis-measured by 10 ft. I found and established accessories as shown below and found a white plastic sign post bearing West, 1 ft. dist.



(c) (d) (e) Plan view of corner with ties to at least 4 witness monuments. If in disagreement with previously established corner, show the distances between the two corners and also indicate the ties to the disputed.



(i) I, Jeffrey W. Austin, Registered Land Surveyor No. S-1885, hereby certify upon honor that the corner location on this record was determined by me or under my direction and control and that this U.S. Public Land Survey Monument Record is correct and complete to the best of my knowledge and belief.

Signature:  Date: 7 JUNE 2005



INDEX NO. C-9

390505 2000