

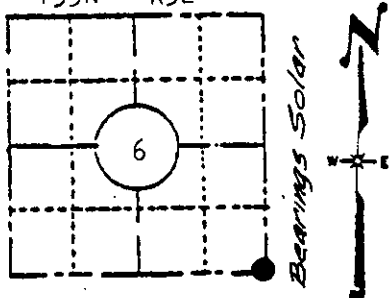
Stock No. 26273

U. S. PUBLIC LAND SURVEY MONUMENT RECORD

INSTRUCTIONS:

- (a) Identify the corner by reference to the U.S. public land survey system.

Southeast Corner
Section 6
T39N - R5E



LOCATION SKETCH

(Location of landmark indicated by "●")

This record shall show the location of the corner and shall include all of the following nine elements (a through i).

Sept. 19, 1863- Alex Anderson, Deputy Surveyor
Set post corner to Sections 5, 6, 7 and 8
Original bearing trees:

Aspen 10", N13-1/2°E, 225 links (148.50 ft.)
Yellow Pine 12", S31°E, 62 links (40.92 ft.)

1926- Plat of Bo-Di-Lac recorded in Vol. 5 of Plats on page 31; D.S. Burnett, Surveyor, defines positions of Section corner in relation to platted lot corners. However, no monument description is given.

June, 1958- William S. Cameron, R.L.S., Private survey map in Government Lot 1, Section 6, identifies corner as monumented by an iron pipe.

June 19th, 1972- Herbert Moore, Reg. Land Surveyor Certified Survey Map recorded in Volume 1 Survey Maps on Page 71 identifies corner as being marked monumented with an iron pipe.

- (b) Describe any record evidence, monument evidence, occupational evidence, testimonial evidence or any other material evidence you considered, and whether the monument was found or placed.

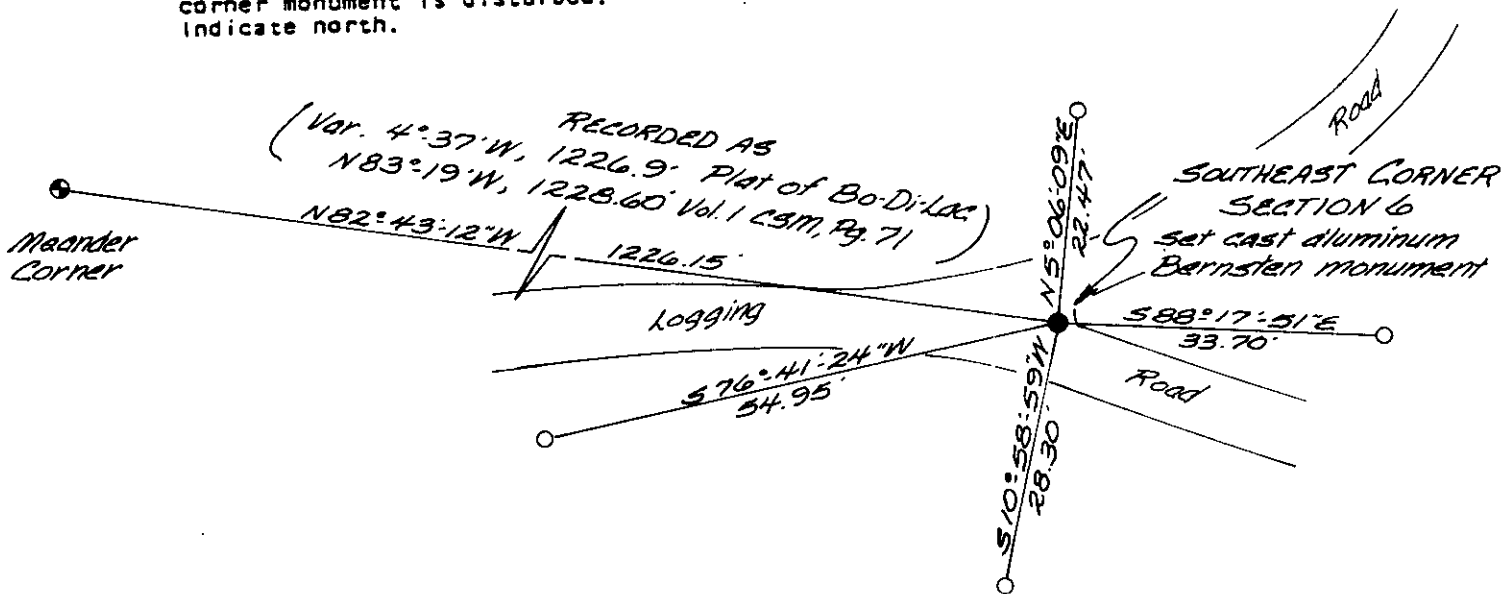
Found a 1-1/4" diameter iron pipe damaged by recent construction of a logging road. Replaced the iron pipe with an Oneida County Survey Monument (Cast aluminum Bernsten Monument) 3-1/2" diameter cap, 2 inch inside diameter pipe and 30 inches long, marked to identify corner. Verified the corner position with nearby spike traverse control points shown in field notes by Wilderness Surveying, Inc. dated February 16th, 1978 for a survey in Section 5.

- (c) In the plan view drawing below, provide reference ties to at least 4 witness monuments, or, if the location is within a municipality, to at least 2 witness monuments. (Witness monuments shall be made of concrete, natural stone, iron or other equally durable material, except wood.) Describe witness monuments.

- (d) Show a plan view drawing depicting the relevant monuments and reference ties which is sufficient in detail to enable accurate relocation of the corner monument if the corner monument is disturbed. Indicate north.

Scale 1"=20'

○ = 3/4" dia. x 24" long iron pipe reference monument.



3905060000

E-5

(c) Describe any material discrepancy between the location of the corner as restored or reestablished and the location of that corner as previously restored or reestablished by distance and direction. Show the discrepancy on the plan view drawing under (d), above. Show the distances between the corner as previously restored or reestablished and (1) the corner as restored or reestablished, and (2) to at least 2 of the witness monuments shown on the drawing in (d), above.

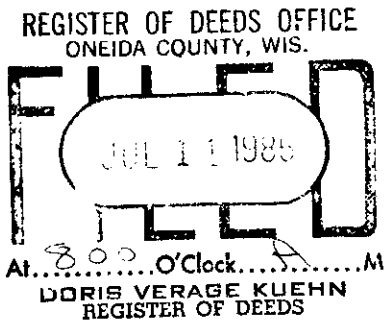
NO MATERIAL DISCREPANCY BETWEEN THE RECORD POSITION AND THE EXISTING MONUMENTED LOCATION WAS FOUND.

(f) Was the corner restored through acceptance of (1) an obliterated evidence location, or, (2) a found perpetuated location?

THE CORNER WAS RESTORED THROUGH ACCEPTANCE OF AN OBLITERATED EVIDENCE LOCATION.

(g&h) Was the corner reestablished through lost corner proportionate methods? If so, show the method, including the directions and distances to other public land survey corners used as evidence or used for proportioning in determining the corner location?

No



(i) I, JAMES D. REIN, RLS No. S-1234 (type or print name) certify that the corner location shown on this record was determined by me or under my direction and control and that this U.S. Public Land Survey Monument Record is correct and complete to the best of my knowledge and belief.

James D Rein
Signature

November 10th, 1983
Date

