

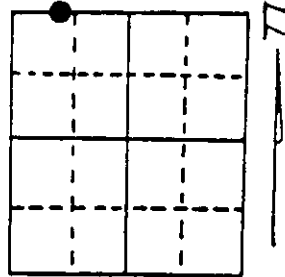
U.S. PUBLIC LAND SURVEY MONUMENT RECORD

Note: This form is intended and designed to fulfill all requirements of Wisconsin Administrative Code, Chapter A-E 7.08 U.S. Public Land Survey Monument Record (3) (a) (b) (c) (d) (e) (f) (g) (h) (i). An additional sheet may be added if necessary to conform with said requirements.

(a) Corner location: Township 39 North
 Range 5 East/West

Town/City/Village Minocqua

County Oneida

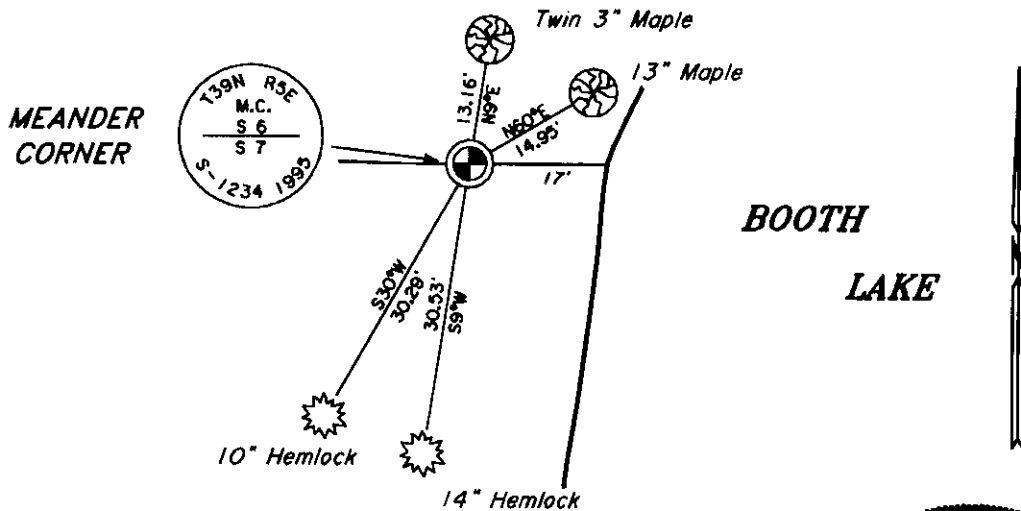


West Meander Corner of the north line of Section 7

(b) (f) (g) (h) Description of monument found at this corner and if it was accepted, state all evidence (material, testimonial, occupational, plats, records, other monuments) used as a basis for accepting. If not accepted or if nothing was found, state evidence used as basis for establishing location. If reestablished through lost corner proportionate methods, indicate all monuments, distances and directions used to establish. Indicate type of monument found or set and sign post.

- Sept. 19th, 1863 - Alexander Anderson, Deputy Surveyor, set meander post witnessed by two bearing trees: 10" Sugar bearing S28 1/2°W, 8 links and an 8" Birch bearing N15°W, 24 links.
- Aug. 3rd 1976 - Gerald Boyd Inman, Registered Land Surveyor, shows, on Plat of Forest Green II, that he placed a 2" diameter iron pipe on line between the northeast and northwest corners of Section 7 at an intersection with the westerly shore of Booth Lake.
- Jan. 20th, 1995 - James D. Rein, Registered Land Surveyor, recovered a 2" diameter iron pipe. Replaced the iron pipe with a capped 2" dia. x 30" long aluminum monument and made four bearing trees as shown in plan view. Set a plastic post 1 foot South of said monument.

(c) (d) (e) Plan view of corner with ties to at least 4 witness monuments. If in disagreement with previously established corner, show the distances between the two corners and also indicate the ties to the disputed corner.



(i) I, James D. Rein, Registered Land Surveyor No. 1234
 (type or print name) certify that the corner location on this record was determined by me or under my direction and control and that this U.S. Public Land Survey Monument Record is correct and complete to the best of my knowledge and belief.

James D. Rein
 Signature

January 24th, 1995
 Date



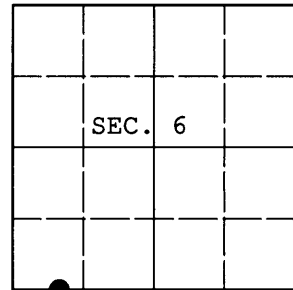
Index No. E 1-2

Stamp
 3905060034

U.S. PUBLIC LAND SURVEY MONUMENT RECORD

Note: This form is intended and designed to fulfill all requirements of Wisconsin Administrative Code, Chapter A-E 7.08 U.S. Public Land Survey Monument Record (3) (a) (b) (c) (d) (e) (f) (g) (h) (i). An additional sheet may be added if necessary to conform with said requirements.

(a) CORNER LOCATION: WISCRS (Oneida County)
Meander Cor. of Secs. 6 & 7 N: 256,983.633 USft
Township 39 North E: 134,855.968 USft
Range 5 East of the 4th P.M. Datum: NAD 1983(2007)
Town of Minocqua County of Oneida



(b) HISTORY OF ORIGINAL CORNER ESTABLISHMENT

Original Surveyor: Alexander Anderson Original Accessories:
Date of Survey: Commenced: Sept. 15, 1863 sugar 10" S28-1/2°W, 8 lks.
Completed: Sept. 20, 1863 birch 8" N15°W, 24 lks.

(b) (f) (g) (h) Description of monument found at this corner and if it was accepted, state all evidence (material, testimonial, occupational, plats, records, other monuments) used as a basis for accepting. If not accepted or if nothing was found, state evidence used as basis for establishing location. If re-established through lost corner proportionate methods, indicate all monuments, distances and directions used to establish. Indicate type of monument and sign post found or set.

NOTE: This is a perpetuation of a previous USPLS Monument Record by James D. Rein, RLS dated January 24, 1995 and filed in the office of the Oneida County Register of Deeds. A complete history of the corner can be found on the previous monument record. I accept the previous location as a true and faithful perpetuation or reestablishment of the original corner location and further perpetuate it as follows.

March 6, 2013: I found and accepted Rein's monument, a 2-1/2" diam. Oneida Co. aluminum monument. Rein's accessories were found in substantial agreement with his previous record and were not remeasured as the sole purpose of this work is to report the coordinates of the corner point.

The coordinates shown were derived from offset static GPS observations referenced to a VRS control point generated by the WISCORS network.

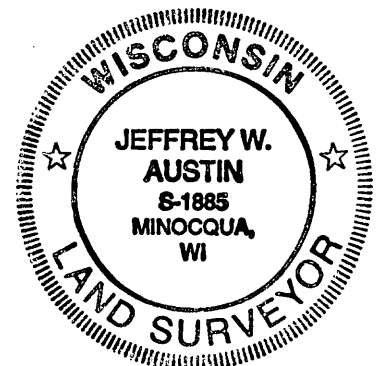
(c) (d) (e) Plan view of corner with ties to at least 4 witness monuments. If in disagreement with previously established corner, show the distances between the two corners and also indicate the ties to the disputed.

REGISTER OF DEEDS OFFICE
ONEIDA COUNTY
FILED

APR 11 2013

AT _____ O'CLOCK _____ M
KYLE J. FRANSON
REGISTER OF DEEDS

(i) I, Jeffrey W. Austin, Registered Land Surveyor No. S-1885, hereby certify that the corner location on this record was determined by me or under my direction and control and that this U.S. Public Land Survey Monument Record is correct and complete to the best of my knowledge and belief.



Signature 

MAR 26, 2013
Date