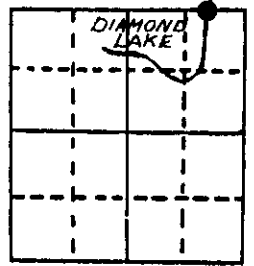


U.S. PUBLIC LAND SURVEY MONUMENT RECORD

Note: This form is intended and designed to fulfill all requirements of Wisconsin Administrative Code, Chapter A-E 5.02, U.S. Public Land Survey Monument Record (3) (a) (b) (c) (d) (e) (f) (g) (h) (i). An additional sheet may be added if necessary to conform with said requirements.

(a) Corner location: Township 39 North
 Range 5 East

Meander Corner
 East shore
 Diamond Lake



Town MINOCQUA
ONEIDA
 County _____

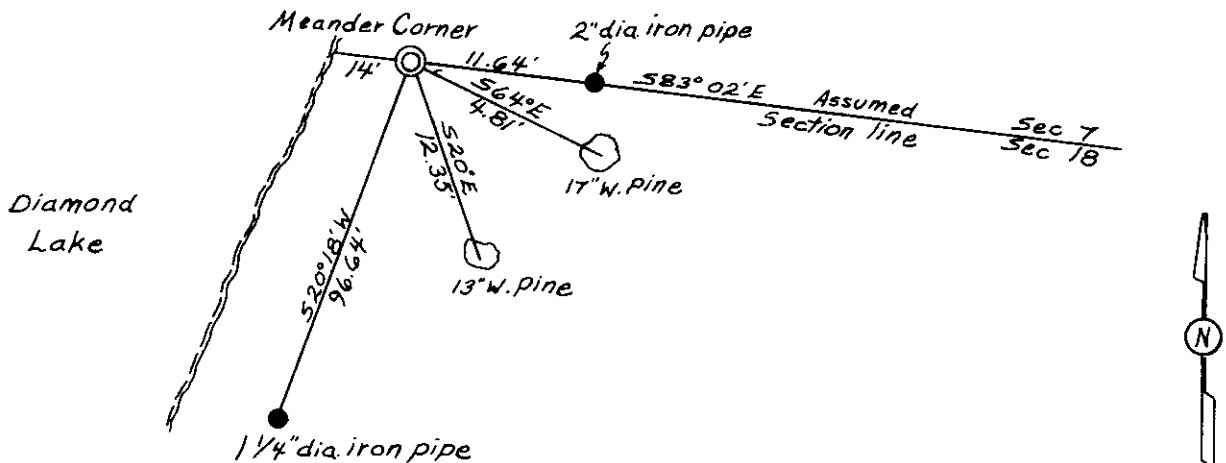
Section 18

(b) (f) (g) (h) Description of monument found at this corner and if it was accepted, state all evidence (material, testimonial, occupational, plats, records, other monuments) used as a basis for accepting. If not accepted or if nothing was found, state evidence used as basis for establishing location. If reestablished through lost corner proportionate methods, indicate all monuments, distances and directions used to establish.

- Sept. 1863 - Alexander Anderson, Gov't. Deputy Surveyor, set meander corner original bearing trees: White Pine 14", N28°E, 32 links and a White Pine 8", S17-1/2°E, 19 links
- Aug. 1954 - F. R. Wincentzen, P.E., plats Squirrel and Diamond Lakes Subdivision. Denotes M.C. Original Gov't. on plat map.
- April 17, 1984 - Jerome N. Kraemer, R.L.S. finds 1-1/2" dia. iron pipe protruding 3' above ground level. 4" by 4" square post scribed 'X' M.C.
 Found bearing trees: 17" White Pine, S64°E, 4.4 feet to blaze scar;
 13" White Pine, S20°E, 12.0 feet to blaze scar.
 Corner was accepted as used by local surveyors. Replaced 1-1/2" diameter iron pipe found with a Berntsen A-1 monument set flush with ground level. Established ties as shown in plan view below.

(c) (d) (e) Plan view of corner with ties to at least 4 witness monuments. If in disagreement with previously established corner, show the distances between the two corners and also indicate the ties to the disputed corner. Distance measured to aluminum nail inside of tree.

⊙ = Berntsen A-1 monument. 2-1/8" diameter and 30" long aluminum pipe with a 3-1/4" diameter cast aluminum cap stamped to identify corner. Also has a cast aluminum clover shaped base.



(i) I, JEROME N. KRAEMER
 (type or print name) certify that the corner location on this record was determined by me or under my direction and control and that this U.S. Public Land Survey Monument Record is correct and complete to the best of my knowledge and belief.

Jerome N. Kraemer April 19th, 1984
 Signature Date



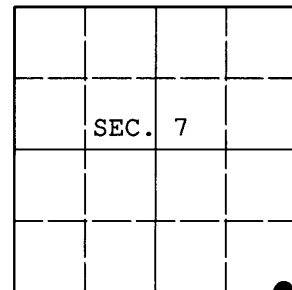
Index No. 5-4

3905070002

U.S. PUBLIC LAND SURVEY MONUMENT RECORD

Note: This form is intended and designed to fulfill all requirements of Wisconsin Administrative Code, Chapter A-E 7.08 U.S. Public Land Survey Monument Record (3) (a) (b) (c) (d) (e) (f) (g) (h) (i). An additional sheet may be added if necessary to conform with said requirements.

(a) CORNER LOCATION: WISCRS (Oneida County)
Meander Cor. of Secs. 7 & 18 N: 251,167.450 USft
Township 39 North E: 139,197.567 USft
Range 5 East of the 4th P.M. Datum: NAD 1983(2007)
Town of Minocqua County of Oneida



(b) HISTORY OF ORIGINAL CORNER ESTABLISHMENT

Original Surveyor: Alexander Anderson Original Accessories:
Date of Survey: Commenced: Sept. 15, 1863 w. pine 14" N28°E, 32 lks.
Completed: Sept. 20, 1863 w. pine 8" S17-1/2°E, 19 lks.

(b) (f) (g) (h) Description of monument found at this corner and if it was accepted, state all evidence (material, testimonial, occupational, plats, records, other monuments) used as a basis for accepting. If not accepted or if nothing was found, state evidence used as basis for establishing location. If re-established through lost corner proportionate methods, indicate all monuments, distances and directions used to establish. Indicate type of monument and sign post found or set.

NOTE: This is a perpetuation of a previous USPLS Monument Record by Jerome N. Kraemer, RLS dated April 19, 1984 and filed in the office of the Oneida County Register of Deeds. A complete history of the corner can be found on the previous monument record. I accept the previous location as a true and faithful perpetuation or reestablishment of the original corner location and further perpetuate it as follows.

February 20, 2013: I found and accepted Kraemer's monument, a 2-1/2" diam. Oneida Co. aluminum monument. Kraemer's accessories were found in substantial agreement with his previous record and were not remeasured as the sole purpose of this work is to report the coordinates of the corner point.

The coordinates shown were derived from offset static GPS observations referenced to a VRS control point generated by the WISCORS network.

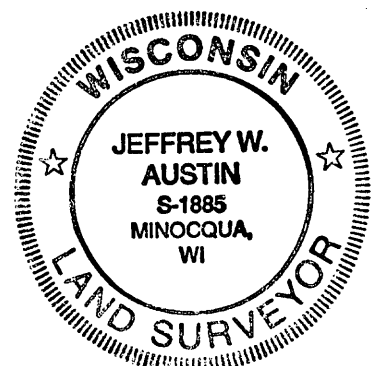
(c) (d) (e) Plan view of corner with ties to at least 4 witness monuments. If in disagreement with previously established corner, show the distances between the two corners and also indicate the ties to the disputed.

REGISTER OF DEEDS OFFICE
ONEIDA COUNTY
FILED

APR 11 2013

AT _____ O'CLOCK _____ M
KYLE J. FRANSON
REGISTER OF DEEDS

(i) I, Jeffrey W. Austin, Registered Land Surveyor No. S-1885, hereby certify that the corner location on this record was determined by me or under my direction and control and that this U.S. Public Land Survey Monument Record is correct and complete to the best of my knowledge and belief.



Signature

MAR 26, 2013
Date

3905070002 (INDEX NO. J-4,5)