

# U.S. PUBLIC LAND SURVEY MONUMENT RECORD

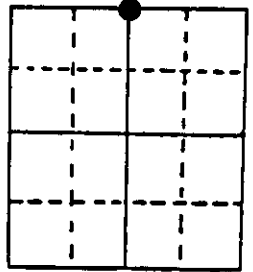
Note: This form is intended and designed to fulfill all requirements of Wisconsin Administrative Code, Chapter A-E 7.08 U.S. Public Land Survey Monument Record (3) (a) (b) (c) (d) (e) (f) (g) (h) (i). An additional sheet may be added if necessary to conform with said requirements.

(a) Corner location: Township 39 North

Range 5 East/West

Town/City/Village Minocqua

County Oneida



Section 16

(b) (f) (g) (h) Description of monument found at this corner and if it was accepted, state all evidence (material, testimonial, occupational, plats, records, other monuments) used as a basis for accepting. If not accepted or if nothing was found, state evidence used as basis for establishing location. If reestablished through lost corner proportionate methods, indicate all monuments, distances and directions used to establish. Indicate type of monument found or set and sign post.

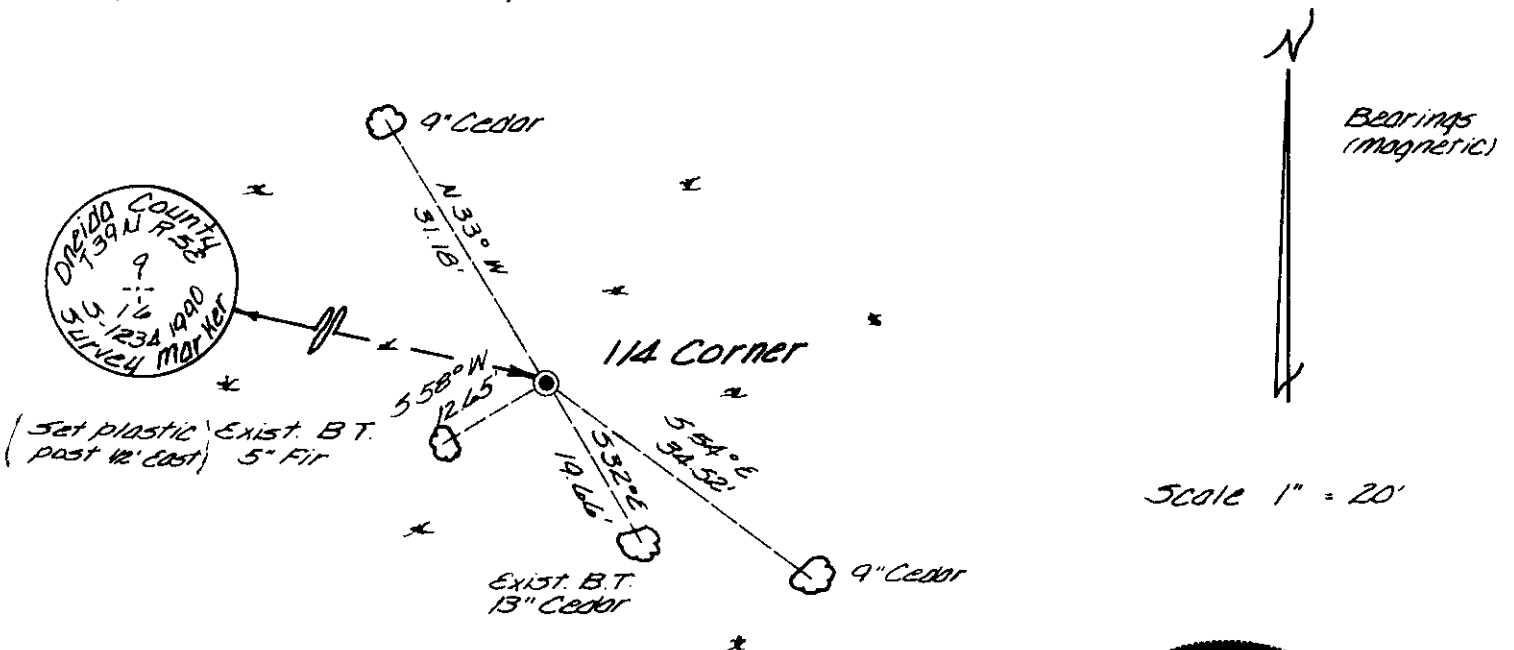
1863 Alex Anderson (Deputy Surveyor) set 1/4 section post.  
Bearing Trees: Tamarack 5" N29 1/2°W 9 Links, Tamarack 5" S15°W 26 Links.

June 26 & 27; V.M. Maine (Oneida County Surveyor) shows original 1/4 section post.

June 1956; E.F. Kowalke (Surveyor) shows on map 2-B-59 that the 1/4 corner is monumented by V.M. Maine's cedar post. Bearing Trees: Cedar 10" S26°E 19.2', Cedar 7" S78°E 14.6'.

Dec. 1990; James D. Rein found a 1 1/4" iron pipe and old down 5" square post. Drove rebar and 3" aluminum tablet inside of the pipe and set plastic post 1/2' East.

(c) (d) (e) Plan view of corner with ties to at least 4 witness monuments. If in disagreement with previously established corner, show the distances between the two corners and also indicate the ties to the disputed corner.



(i) I, James D. Rein, Registered Land Surveyor No. 1234  
(type or print name) certify that the corner location on this record was determined by me or under my direction and control and that this U.S. Public Land Survey Monument Record is correct and complete to the best of my knowledge and belief.



[Signature] January 29th, 1991  
Signature Date

3905090020

Stamp

Index No. ....