

U.S. PUBLIC LAND SURVEY MONUMENT RECORD

Note: This form is intended and designed to fulfill all requirements of Wisconsin Administrative Code, Chapter A-E 7.08 U.S. Public Land Survey Monument Record (3)(a)(b)(c)(d)(e)(f)(g)(h)(i). An additional sheet may be added if necessary to conform with said requirements.

(a) CORNER LOCATION: Orig. M.C. # 38

West M.C. corner of Sec. 16

Township 39 North

Range 5 East

Town/City/Village ~~XXXXXX~~ Minocqua

County of Oneida

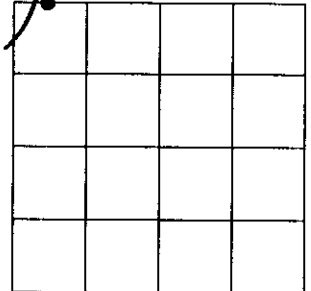
State Plane Coordinates

X _____

Y _____

Datum Base _____

SQUIRREL LAKE



(b) HISTORY OF ORIGINAL CORNER ESTABLISHMENT

Original Surveyor: Alexander Anderson

Original B.T.'S

SECTION 16

Date of Survey: Commenced Sept. 15th, 1863

Birch 7" S43 1/2°E, 20 links

Completed Sept. 20th, 1863

Birch 5" N36°E, 15 links

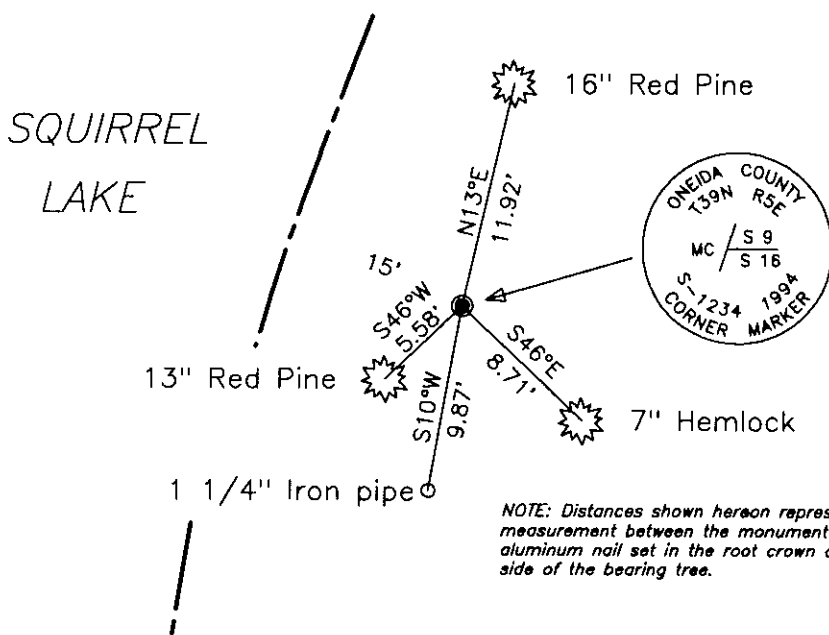
(f)(g)(h) Description of monument found at this corner and if it was accepted, state all evidence (material, testimonial, occupational, plats, records, other monuments) used as a basis for establishing location. If not accepted or if nothing was found, state evidence used as basis for establishing location. If reestablished through lost corner proportionate methods, indicate all monuments, distances and directions used to establish. Indicate type of monument and sign post found or set.

February 15th, 1956 - E. F. Kowalke, Surveyor: Field Book #15, Page 10; identifies corner as being monumented by an iron pipe, referenced by a R.R. Spike in an 11" Norway Pine bearing S43°W, 5.5 feet and by a R.R. Spike in a 14" Norway Pine bearing N20°E, 11.0 feet.

October 21st, 1982 - David F. McMullen, R.L.S. No. 1340: Oneida County Certified Survey Map No. 973; identifies corner as being monumented by a 1" dia. iron pipe, referenced by a 16" Norway Pine N12°E, 11.0' and by a 10" Norway Pine S43°W, 5.4'.

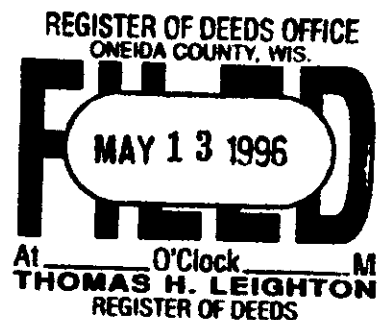
June 1st, 1994 - James D. Rein, R.L.S. No. 1234: Replaced 1" dia. iron pipe with an Oneida County capped 2" dia. x 30" long aluminum monument, referenced by ties as shown on the plan view. Set plastic marker stake 1/2 foot northeast of corner monument.

(c)(d)(e) Plan view of corner with ties to at least 4 witness monuments. If in disagreement with previously established corner, show the distance between the two corners and also indicate the ties to the disputed corner.



NOTE: Distances shown hereon represent a measurement between the monument and an aluminum nail set in the root crown on a side of the bearing tree.

SCALE 1" = 10'

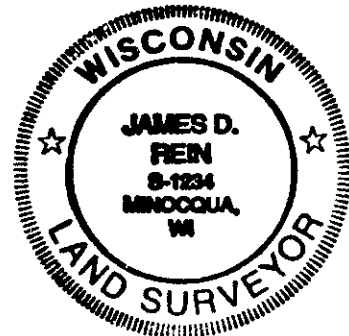


(i) I, James D. Rein, Registered Land Surveyor No. 1234, hereby certify that the corner location on this record was determined by me or under my direction and control and that this U.S. Public Land Survey Monument Record is correct and complete to the best of my knowledge and belief.

James D. Rein
Signature

July 1st, 1994

Date



INDEX NO. J 9-10

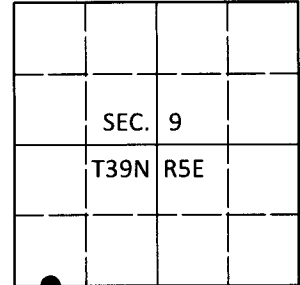
3905090035

U.S. PUBLIC LAND SURVEY MONUMENT RECORD

Note: This form is intended and designed to fulfill all requirements of Wisconsin Administrative Code, Chapter A-E 7.08 U.S. Public Land Survey Monument Record (3)(a-i).

(a) CORNER LOCATION
 Meander Cor. of Secs. 9 & 16
 Township 39 North
 Range 5 East of the 4th P.M.
 Town of Minocqua
 County of Oneida

WISCRS - Oneida County
 N: 251,683.67 USft
 E: 145,398.75 USft
 Datum: NAD 83(2011)
 GNSS Method: RTN - Offset
 GNSS Control: WISCORS VRS



MC

(b) HISTORY OF ORIGINAL CORNER ESTABLISHMENT

Original Surveyor:

Original Accessories:

Date of Survey Commenced:
 Completed:

See previous USPLS Monument Record

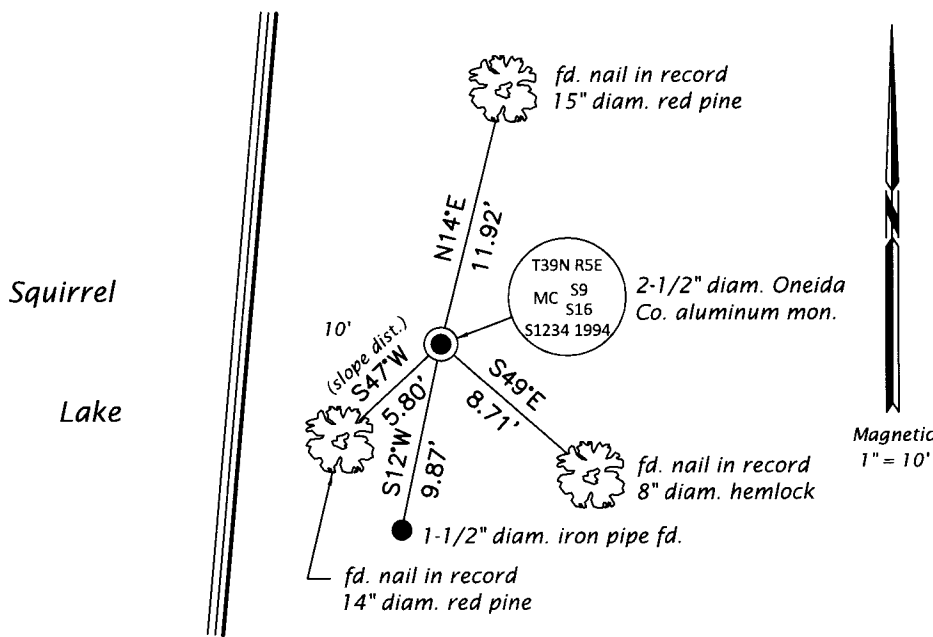
(b)(f)(g)(h) Description of monument found at this corner and if it was accepted, state all evidence (material, testimonial, occupational, plats, records, other monuments) used as a basis for accepting. If not accepted or if nothing was found, state evidence used as basis for establishing location. If re-established through lost corner proportionate methods, indicate all monuments, distances and directions used to establish. Indicate type of monument and sign post found or set.

This is a perpetuation of a previous USPLS Monument Record by James D. Rein, RLS dated Jul. 1, 1994 and filed in the office of the Oneida County Register of Deeds. A complete history of the corner can be found on the previous monument record. I accept the previous location as a true and faithful perpetuation or reestablishment of the original corner location and further perpetuate it as follows.

Mar. 22, 2019: I found and accepted the record monument, a 2-1/2" diam. aluminum pipe with a 3-1/4" diam. Oneida Co. aluminum cap projecting 3" above the ground surface. I found or established accessories as shown below. I found a white vinyl sign adjacent to the monument.

The coordinate value shown has been verified by at least one of the following methods: 1) comparison to a previously GPS determined published value; 2) the value is the average of two or more GPS observations at a markedly different time; 3) one or more distances were measured back to the GPS observed corner from temporary GPS observed offset locations.

(c)(d)(e) Plan view of corner with ties to at least 4 witness monuments. If in disagreement with previously established corner, show the distances between the two corners and also indicate the ties to the disputed.

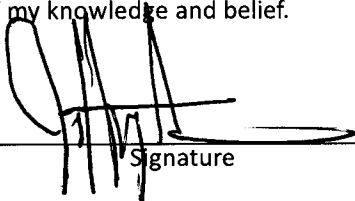


REGISTER OF DEEDS OFFICE
 ONEIDA COUNTY
 FILED

APR 10 2019

KYLE J. FRANSON
 REGISTER OF DEEDS

(i) I, Jeffrey W. Austin, Professional Land Surveyor No. S-1885, hereby certify that the corner location on this record was determined by me or under my direction and control and that this U.S. Public Land Survey Monument Record is correct and complete to the best of my knowledge and belief.


 Signature

1 APR 2019
 Date