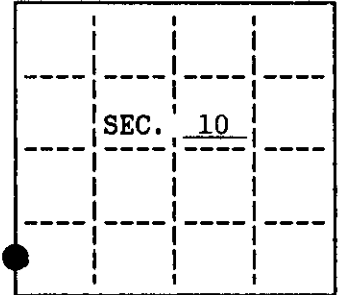


**U. S. PUBLIC LAND SURVEY MONUMENT RECORD**

Note: This form is intended and designed to fulfill all requirements of Wisconsin Administrative Code, Chapter A-E 7.08 U.S. Public Land Survey Monument Record (3)(a)(b)(c)(d)(e)(f)(g)(h)(i). An additional sheet may be added if necessary to conform with said requirements.

(a) CORNER LOCATION: State Plane Coordinates  
 Meander corner of Sec.9&10 X \_\_\_\_\_  
 Township 39 North Y \_\_\_\_\_  
 Range 5 East Datum Base \_\_\_\_\_  
 Town/City Minocqua County of Oneida



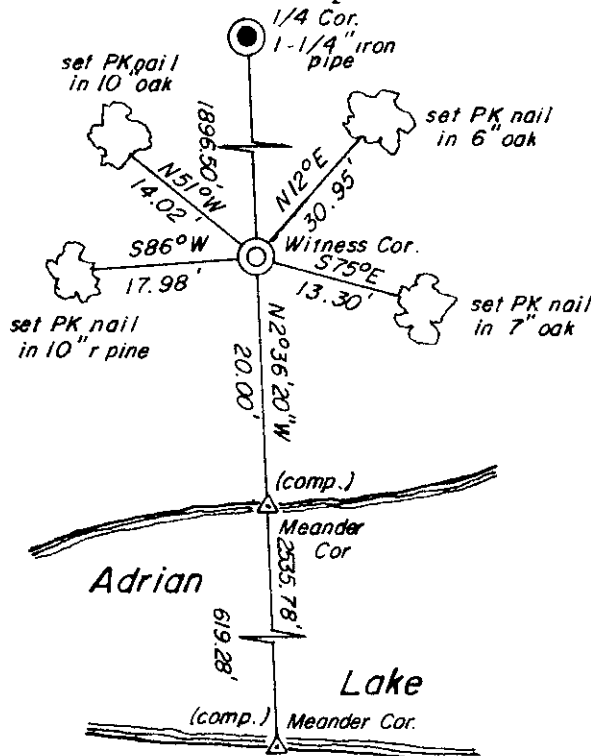
(b) HISTORY OF ORIGINAL CORNER ESTABLISHMENT  
 Original Surveyor: Alexander Anderson  
 Date of Survey: Commenced September, 1863  
 Completed September, 1863

Original B.T.'S  
 Y. Pine 14 N84°W, 31 lks  
 Blk. Oak 6 N3-3/4°E, 158 Lks.

(b)(f)(g)(h) Description of monument found at this corner and if it was accepted, state all evidence (material, testimonial, occupational, plats, records, other monuments) used as a basis for accepting. If not accepted or if nothing was found, state evidence used as basis for establishing location. If reestablished through lost corner proportionate methods, indicate all monuments, distances and directions used to establish. Indicate type of monument and sign post found or set.

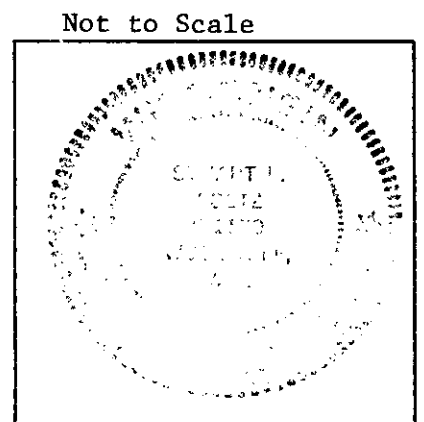
August 10, 1994 - I established this corner on the line common to Sections 9 & 10 at the existing high water mark. The One-Quarter Corner bears N2°36'20"W, 1916.50 feet (GLO 29.30 Chs.). The Meander Corner common to Sections 15 & 16 bears S2°36'20"E, 619.28 feet (GLO 11.70 Chs.). The existing high water mark was used in favor of single proportionate measure due to the obvious error that occurred when GLO measured across the lake. I witnessed this corner with an Oneida County Aluminum Monument set on the line common to Sections 9 & 10, 20.00 feet north of the true corner. I witnessed the monument as shown below and set a plastic signpost Northeast 1.5 feet.

(c)(d)(e) Plan view of corner with ties to at least 4 witness monuments. If in disagreement with previously established corner, show the distances between the two corners and also indicate the ties to the disputed.



(i) I, Stuart L. Foltz, Reg. Land Surveyor #S-1170 hereby certify that the corner location on this record was determined by me or under my direction and control and that this U.S. Public Land Survey Monument Record is correct and complete to the best of my knowledge and belief.

Stuart L. Foltz 3/2/1995  
 Signature Date



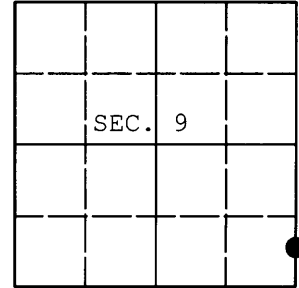
INDEX NO. H, J-13

3905090600

U.S. PUBLIC LAND SURVEY MONUMENT RECORD

Note: This form is intended and designed to fulfill all requirements of Wisconsin Administrative Code, Chapter A-E 7.08 U.S. Public Land Survey Monument Record (3) (a) (b) (c) (d) (e) (f) (g) (h) (i). An additional sheet may be added if necessary to conform with said requirements.

(a) CORNER LOCATION: WISCRS (Oneida County)
Meander Cor. of Secs. 9 & 10 N: 252,208.93 USft
Township 39 North E: 150,096.42 USft
Range 5 East of the 4th P.M. Datum: NAD 1983(2011)
Town of Minocqua County of Oneida



(b) HISTORY OF ORIGINAL CORNER ESTABLISHMENT

Original Surveyor: Original Accessories:
Date of Survey: Commenced:
Completed:

(b) (f) (g) (h) Description of monument found at this corner and if it was accepted, state all evidence (material, testimonial, occupational, plats, records, other monuments) used as a basis for accepting. If not accepted or if nothing was found, state evidence used as basis for establishing location. If re-established through lost corner proportionate methods, indicate all monuments, distances and directions used to establish. Indicate type of monument and sign post found or set.

NOTE: This is a perpetuation of a previous USPLS Monument Record by Stuart L. Foltz, RLS dated March 2, 1995 and filed in the office of the Oneida County Register of Deeds. A complete history of the corner can be found on the previous monument record. I accept the previous location as a true and faithful perpetuation or reestablishment of the original corner location and further perpetuate it as follows.

February 27, 2015: I found and accepted Foltz's monument, a 2.5" diam. aluminum pipe with a 3.25" diam. Oneida Co. aluminum cap projecting 5" above the ground surface. Foltz's accessories were found in substantial agreement with his previous record and were not remeasured as the sole purpose of this work is to report the coordinates of the corner point.

The coordinates shown were derived from a direct RTN GPS observation referenced to the WISCORS network.

(c) (d) (e) Plan view of corner with ties to at least 4 witness monuments. If in disagreement with previously established corner, show the distances between the two corners and also indicate the ties to the disputed.

REGISTER OF DEEDS OFFICE
ONEIDA COUNTY
FILED

MAR 04 2015

AT O'CLOCK M
KYLE J. FRANSON
REGISTER OF DEEDS



(i) I, Jeffrey W. Austin, Registered Land Surveyor No. S-1885, hereby certify that the corner location on this record was determined by me or under my direction and control and that this U.S. Public Land Survey Monument Record is correct and complete to the best of my knowledge and belief.

Signature [Handwritten Signature] Date MAR 1, 2015