

Stock No. 26273

OCS
20 Jun 84

U. S. PUBLIC LAND SURVEY MONUMENT RECORD

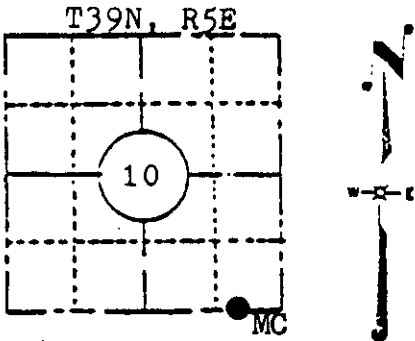
INSTRUCTIONS: This record shall show the location of the corner and shall include all of the following nine elements (a through i).

(a) Identify the corner by reference to the U.S. public land survey system.

Original corner was established in the course of the subdivision of T39N, R5E, which commenced Sept. 15, 1863 and was completed Sept. 20, 1863 by Alex Anderson, Deputy Surveyor.

Original bearing trees:

Aspen 8" S9E 14 lks.
"No other trees"

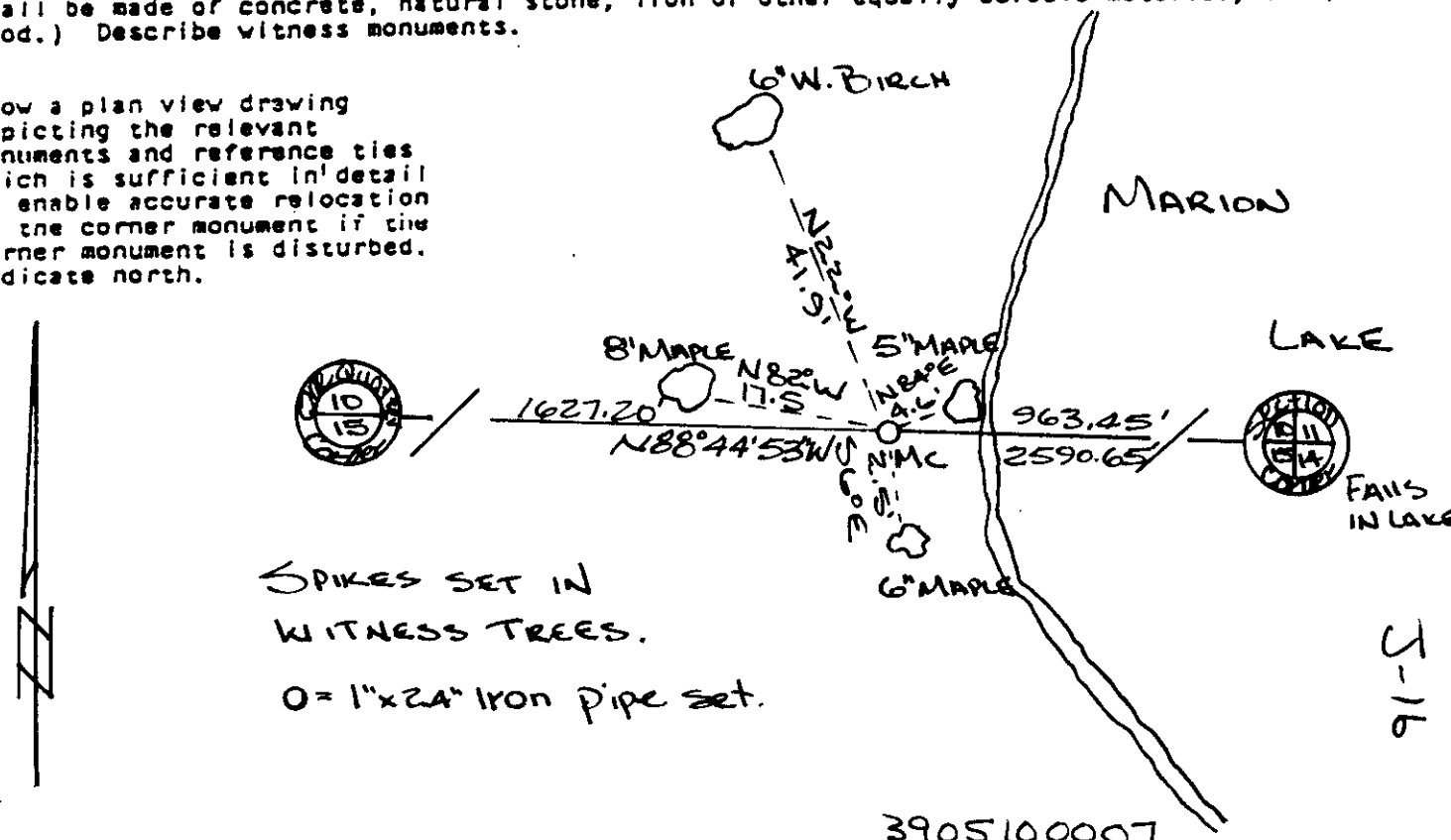


LOCATION SKETCH
(Location of landmark indicated by "MC")

(b) Describe any record evidence, monument evidence, occupational evidence, testimonial evidence or any other material evidence you considered, and whether the monument was found or placed.
See (f)

(c) In the plan view drawing below, provide reference ties to at least 4 witness monuments, or, if the location is within a municipality, to at least 2 witness monuments. (Witness monuments shall be made of concrete, natural stone, iron or other equally durable material, except wood.) Describe witness monuments.

(d) Show a plan view drawing depicting the relevant monuments and reference ties which is sufficient in detail to enable accurate relocation of the corner monument if the corner monument is disturbed. Indicate north.



SPIKES SET IN WITNESS TREES.
O = 1" x 24" Iron pipe set.

3905100007

5-16

(e) Describe any discrepancy between the location of the corner as restored or reestablished and the location of that corner as previously restored or reestablished by distance and direction. Show the discrepancy on the plan view showing under (d), above. Show the distances between the corner as previously restored or reestablished and (1) the corner as restored or reestablished, and (2) to at least 2 of the witness monuments shown on the drawing in (d), above.

See (d)

(f) Was the corner restored through acceptance of (1) an obliterated evidence location, or, (2) a found perpetuated location?

Corner was restored by computing the location on the section line between sections 10 and 15 that fell 20+ feet from the ordinary high water mark of Marion Lake. A 1" diameter iron pipe was set with witness monuments described in (d).

(g&h) Was the corner reestablished through lost corner proportionate methods? If so, show the method, including the directions and distances to other public land survey corners used as evidence or used for proportioning in determining the corner location?

See (f)

Compared with all record data and accepted as correct.

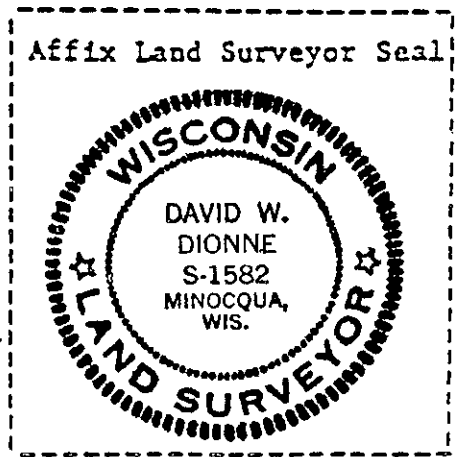
Robert H. Winat
 Robert H. Winat, Oneida Co. Surv.
 27 July 1984

ONEIDA COUNTY, WIS.

Received for Record the 27th.....
 day of July..... A.D. 1984..
 at 9:30 o'clock..... A.M. and Recorded by

(i) I, David W. Dionne
 (type or print name) certify that the corner location shown on this record was determined by me or under my direction and control and that this U.S. Public Land Survey Monument Record is correct and complete to the best of my knowledge and belief.

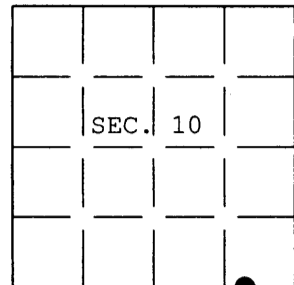
David W. Dionne _____
 Signature Date



U.S. PUBLIC LAND SURVEY MONUMENT RECORD

Note: This form is intended and designed to fulfill all requirements of Wisconsin Administrative Code, Chapter A-E 7.08 U.S. Public Land Survey Monument Record (3) (a) (b) (c) (d) (e) (f) (g) (h) (i). An additional sheet may be added if necessary to conform with said requirements.

(a) CORNER LOCATION: Plane Coordinates
 Meander Cor. of Secs. 10 & 15 X:
 Township 39 North Y:
 Range 5 East of the 4th P.M. Datum:
 Town of Minocqua County of Oneida



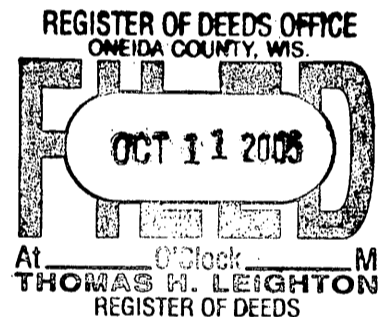
(b) HISTORY OF ORIGINAL CORNER ESTABLISHMENT

Original Surveyor: Alexander Anderson Original Accessories:
 Date of Survey: Commenced Sept. 1863 Aspen 8" S.9°E., 14 lks.
 Completed Sept. 1863 No other tree near

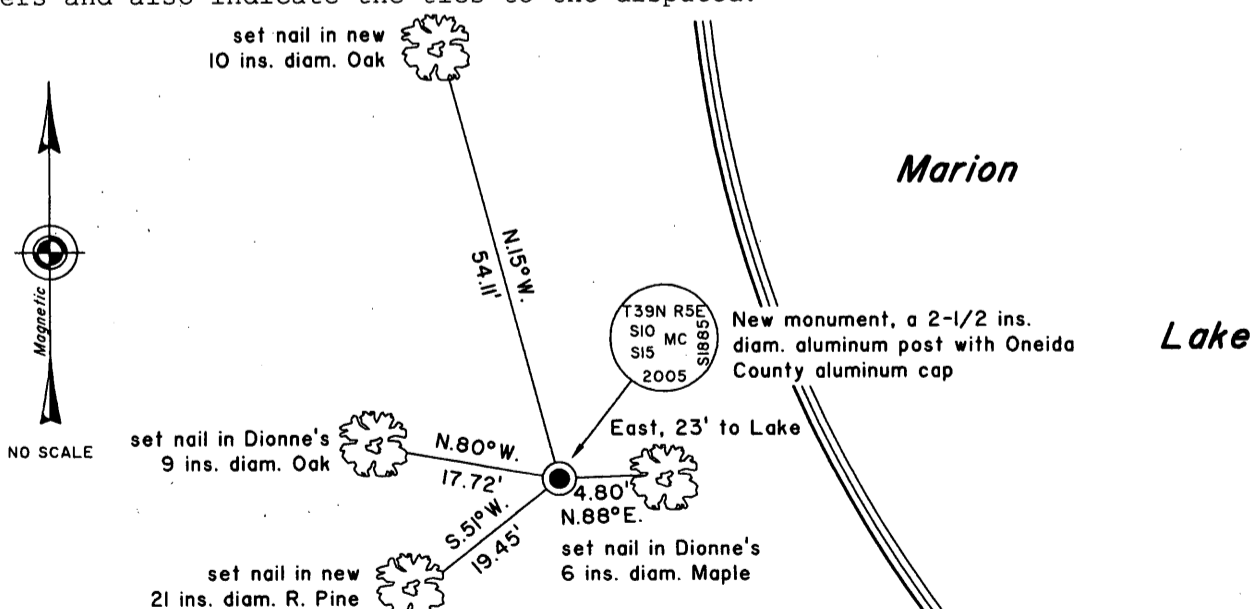
(b)(f)(g)(h) Description of monument found at this corner and if it was accepted, state all evidence (material, testimonial, occupational, plats, records, other monuments) used as a basis for accepting. If not accepted or if nothing was found, state evidence used as basis for establishing location. If re-established through lost corner proportionate methods, indicate all monuments, distances and directions used to establish. Indicate type of monument and sign post found or set.

13 June 1984: USPLS Monument Record prepared by David W. Dionne and filed in the office of the Oneida County Register of Deeds. Set 1 ins. diam. iron pipe on the line common to Secs. 10 and 15.

3 June 2005: I found and accepted Dionne's monument, a 24 ins. long, 1 ins. diam. iron pipe near the water's edge of Marion Lake. Dionne's 6" W. Birch and 6" Maple both found dead at record bearing and distance. I replaced the pipe with an aluminum post, 30 ins. long, 2-1/2 ins. diam. with Oneida County aluminum cap projecting 6 ins. above the ground surface. I found or established accessories as shown below and found a white plastic sign post bearing Northeast, 1 ft. dist.



(c)(d)(e) Plan view of corner with ties to at least 4 witness monuments. If in disagreement with previously established corner, show the distances between the two corners and also indicate the ties to the disputed.



(i) I, Jeffrey W. Austin, Registered Land Surveyor No. S-1885, hereby certify upon honor that the corner location on this record was determined by me or under my direction and control and that this U.S. Public Land Survey Monument Record is correct and complete to the best of my knowledge and belief.

Signature: [Handwritten Signature] Date: 7 JUNE 2005



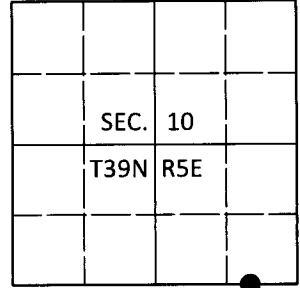
INDEX NO. J-16,17

U.S. PUBLIC LAND SURVEY MONUMENT RECORD

Note: This form is intended and designed to fulfill all requirements of Wisconsin Administrative Code, Chapter A-E 7.08 U.S. Public Land Survey Monument Record (3)(a-i).

(a) CORNER LOCATION
 Meander Cor. of Secs. 10 & 15
 Township 39 North
 Range 5 East of the 4th P.M.
 Town of Minocqua
 County of Oneida

WISCORS - Oneida County
 N: 251,559.13 USft
 E: 154,332.23 USft
 Datum: NAD 83(2011)
 GNSS Method: RTN - Offset
 GNSS Control: WISCORS VRS



MC

(b) HISTORY OF ORIGINAL CORNER ESTABLISHMENT

Original Surveyor:

Original Accessories:

Date of Survey Commenced:
 Completed:

See previous USPLS Monument Record

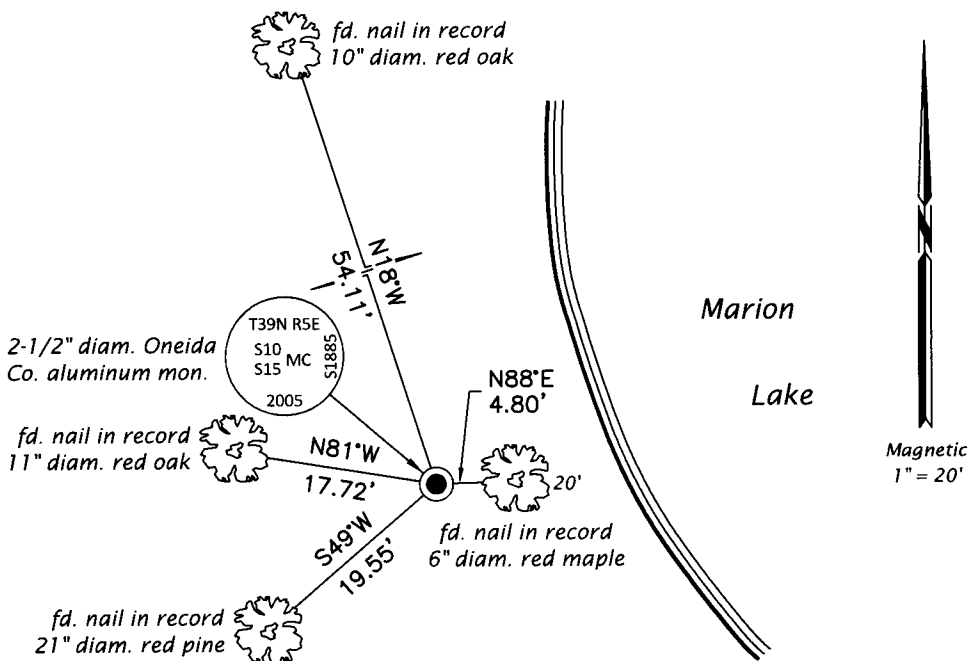
(b)(f)(g)(h) Description of monument found at this corner and if it was accepted, state all evidence (material, testimonial, occupational, plats, records, other monuments) used as a basis for accepting. If not accepted or if nothing was found, state evidence used as basis for establishing location. If re-established through lost corner proportionate methods, indicate all monuments, distances and directions used to establish. Indicate type of monument and sign post found or set.

This is a perpetuation of a previous USPLS Monument Record by Jeffrey W. Austin, RLS dated Jun. 7, 2005 and filed in the office of the Oneida County Register of Deeds. A complete history of the corner can be found on the previous monument record. I accept the previous location as a true and faithful perpetuation or reestablishment of the original corner location and further perpetuate it as follows.

Mar. 6, 2019: I found and accepted the record monument, a 2-1/2" diam. aluminum pipe with a 3-1/4" diam. Oneida Co. aluminum cap projecting 6" above the ground surface. I found or established accessories as shown below. I found a white vinyl sign post bearing Northeast, 0.8 ft.

The coordinate value shown has been verified by at least one of the following methods: 1) comparison to a previously GPS determined published value; 2) the value is the average of two or more GPS observations at a markedly different time; 3) one or more distances were measured back to the GPS observed corner from temporary GPS observed offset locations.

(c)(d)(e) Plan view of corner with ties to at least 4 witness monuments. If in disagreement with previously established corner, show the distances between the two corners and also indicate the ties to the disputed.

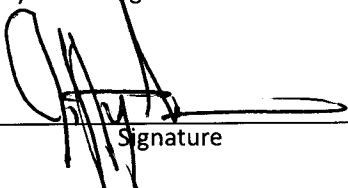


REGISTER OF DEEDS OFFICE
 ONEIDA COUNTY
 FILED

APR 10 2019

KYLE J. FRANSON
 REGISTER OF DEEDS

(i) I, Jeffrey W. Austin, Professional Land Surveyor No. S-1885, hereby certify that the corner location on this record was determined by me or under my direction and control and that this U.S. Public Land Survey Monument Record is correct and complete to the best of my knowledge and belief.


 Signature

1 APR 2019
 Date