

# U. S. PUBLIC LAND SURVEY MONUMENT RECORD

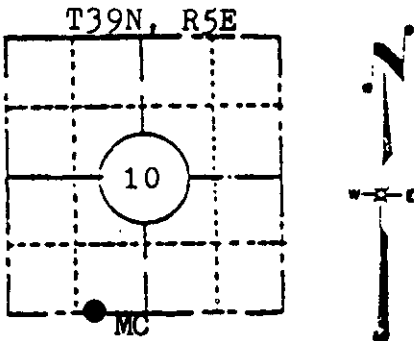
**INSTRUCTIONS:** This record shall show the location of the corner and shall include all of the following nine elements (a through i).

(a) Identify the corner by reference to the U.S. public land survey system.

Original corner was established in the course of the subdivision of T39N, R5E, which commenced Sept. 15, 1863 and was completed Sept. 20, 1863 by Alex Anderson, Deputy Surveyor.

Original bearing trees:

Spruce	8"	N79E	16 lks.
Spruce	6"	S34E	11 lks.



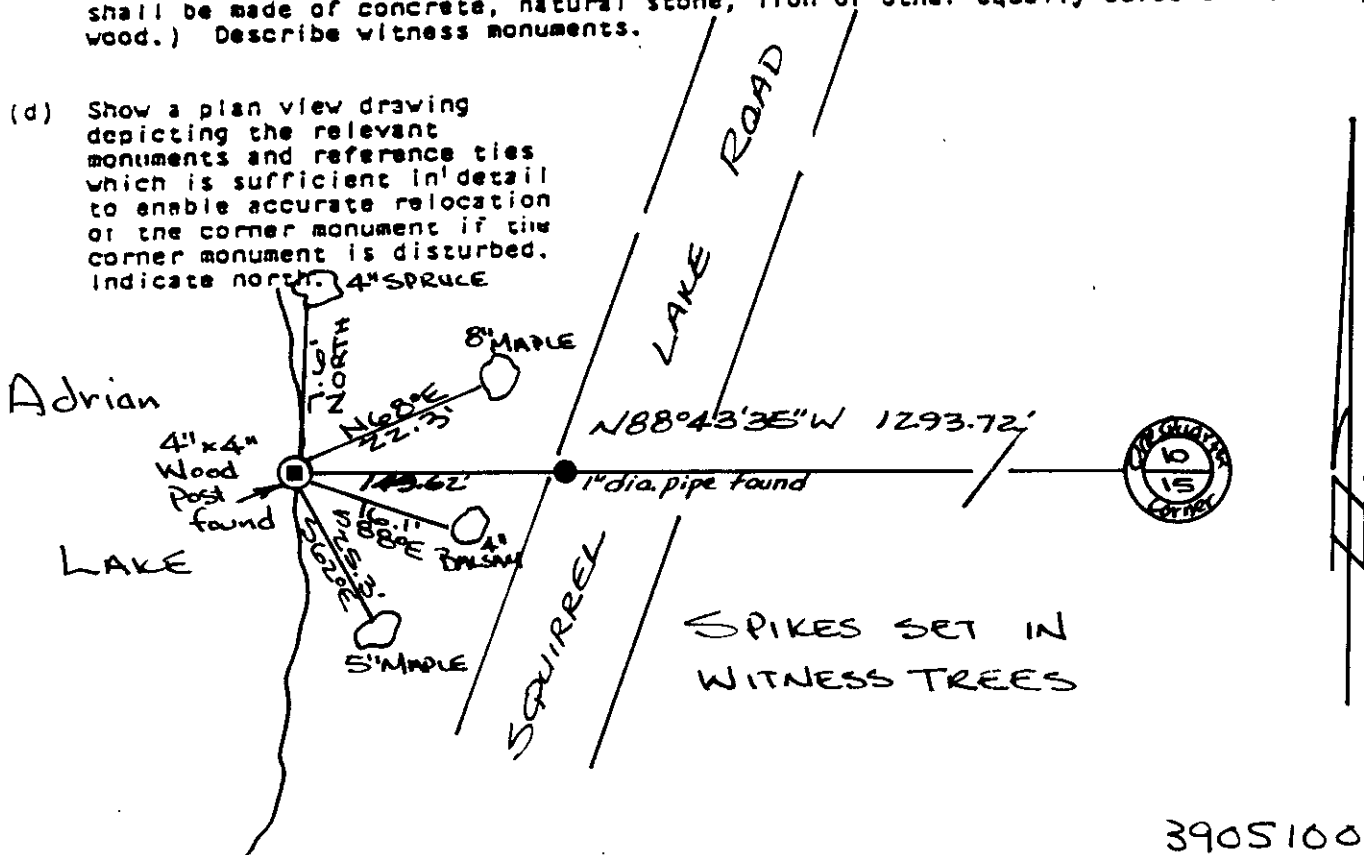
**LOCATION SKETCH**  
(Location of landmark indicated by "●")

(b) Describe any record evidence, monument evidence, occupational evidence, testimonial evidence or any other material evidence you considered, and whether the monument was found or placed.

Monument accepted through a found, perpetuated location.

(c) In the plan view drawing below, provide reference ties to at least 4 witness monuments, or, if the location is within a municipality, to at least 2 witness monuments. (Witness monuments shall be made of concrete, natural stone, iron or other equally durable material, except wood.) Describe witness monuments.

(d) Show a plan view drawing depicting the relevant monuments and reference ties which is sufficient in detail to enable accurate relocation of the corner monument if the corner monument is disturbed. Indicate north.



5-14

(e) Describe any discrepancy between the location of the corner as restored or reestablished and the location of that corner as previously restored or reestablished by distance and direction. Show the discrepancy on the plan view being under (d), above. Show the distances between the corner as previously restored or reestablished and (1) the corner as restored or reestablished, and (2) to at least 2 of the witness monuments shown on the drawing in (d), above.

See (d)

(f) Was the corner restored through acceptance of (1) an obliterated evidence location, or, (2) a found perpetuated location?

A found perpetuated location.

(g&h) Was the corner reestablished through lost corner proportionate methods? If so, show the method, including the directions and distances to other public land survey corners used as evidence or used for proportioning in determining the corner location?

See (f)

Compared with all record data and accepted as correct.

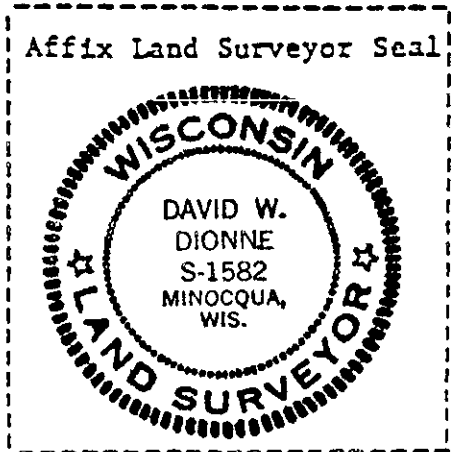
*Robert H. Winat*  
Robert H. Winat, Oneida Co. Surv.  
27 July 1984

ONEIDA COUNTY, WIS.

Received for Record the 27th  
day of July, A.D. 1984  
9:30 o'clock A. M. and recorded in  
Vol. 1582 of the 1582 on page 1582  
David W. Dionne  
Register

(1) I, David W. Dionne  
(type or print name) certify that the corner location shown on this record was determined by me or under my direction and control and that this U.S. Public Land Survey Monument Record is correct and complete to the best of my knowledge and belief.

David W. Dionne 6/19/84  
Signature Date

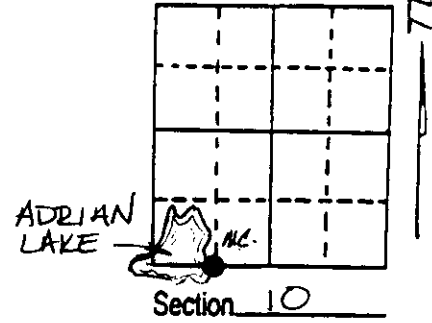


# U.S. PUBLIC LAND SURVEY MONUMENT RECORD

Note: This form is intended and designed to fulfill all requirements of Wisconsin Administrative Code, Chapter A-E 7.08 U.S. Public Land Survey Monument Record (3) (a) (b) (c) (d) (e) (f) (g) (h) (i). An additional sheet may be added if necessary to conform with said requirements.

(a) Corner location: Township 39 North  
 Range 5 East/West

Town/City/Village MINOCQUA  
 County ONEIDA



(b) (f) (g) (h) Description of monument found at this corner and if it was accepted, state all evidence (material, testimonial, occupational, plats, records, other monuments) used as a basis for accepting. If not accepted or if nothing was found, state evidence used as basis for establishing location. If reestablished through lost corner proportionate methods, indicate all monuments, distances and directions used to establish. Indicate type of monument found or set and sign post.

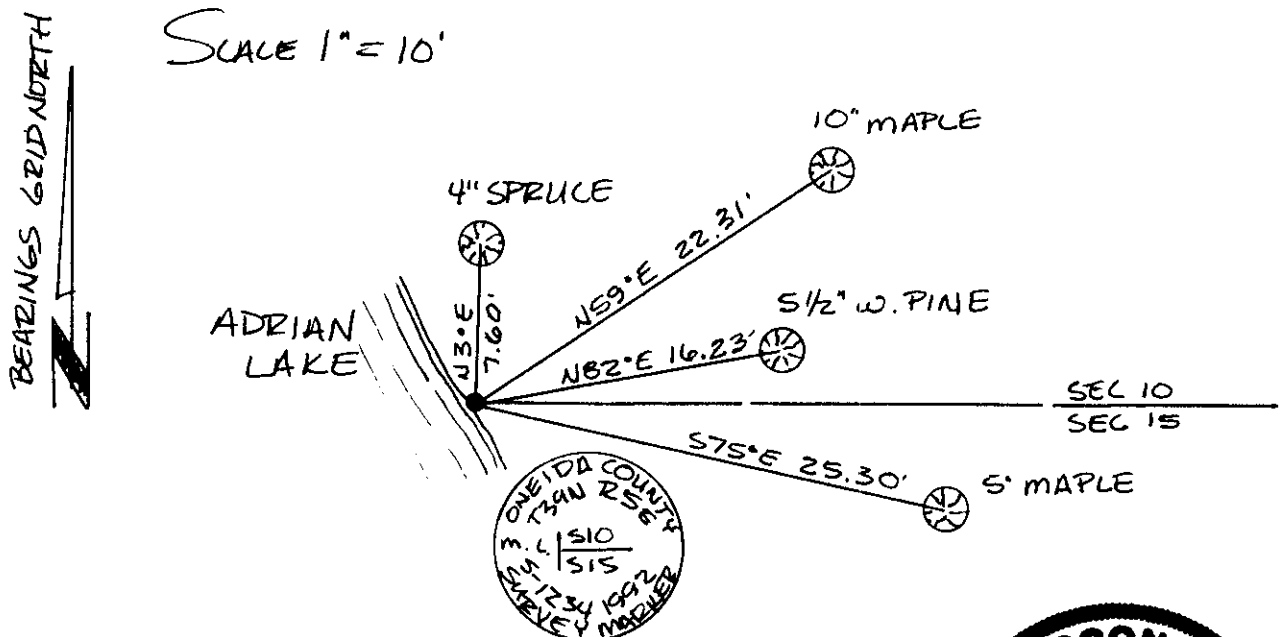
September 16th, 1863 - Alexander Anderson, Deputy Surveyor, set post for meander corner referenced by the following bearing trees: 8" Spruce N79°E, 16 links and a 6" Spruce S34°E, 11 links.

April 15th, 1946 - Walter Hennig, Surveyor, cruising for corners in Sections 15 and 16, field notes identify Meander Corner as being monumented by a wood post, no bearing trees.

June 16th, 1984 - David W. Dionne, Registered Land Surveyor, U.S. Public Land Survey Monument Record recorded the 27th day of July, 1984, identifies corner as being monumented by a 4" x 4" wood post and referenced by the following bearing trees: 4" Spruce North, 7.6 feet; 8" Maple N68°E, 22.3 feet; 4" Balsam S88°E, 16.1 feet; and a 5" Maple S62°E, 25.3 feet.

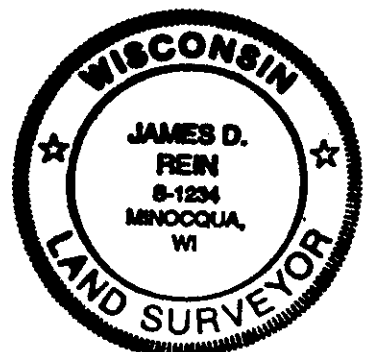
July 17th, 1992 - James D. Rein, Registered Land Surveyor, recovered a 4" x 4" wood post at the easterly shore of Adrian Lake, referenced by four bearing trees as shown in the plan view. Replaced wood post with a capped 2 inch diameter x 60 inch long aluminum monument. Set a plastic marker stake 1/2 foot easterly of the corner monument.

(c) (d) (e) Plan view of corner with ties to at least 4 witness monuments. If in disagreement with previously established corner, show the distances between the two corners and also indicate the ties to the disputed corner.



(i) I, JAMES D. REIN, REGISTERED LAND SURVEYOR #1234  
 (type or print name) certify that the corner location on this record was determined by me or under my direction and control and that this U.S. Public Land Survey Monument Record is correct and complete to the best of my knowledge and belief.

James D. Rein  
 Signature  
7-14-92  
 Date



3905100029

Stamp

Index No. 14-15