

U. S. PUBLIC LAND SURVEY MONUMENT RECORD

INSTRUCTIONS :

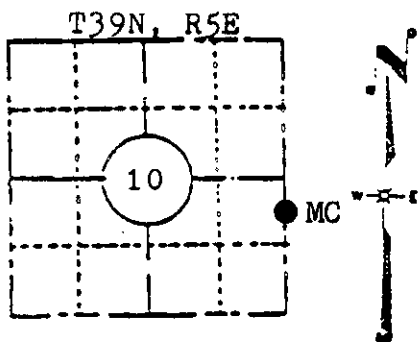
This record shall show the location of the corner and shall include all of the following nine elements (a through i).

- (a) Identify the corner by reference to the U.S. public land survey system.

Original corner was established in the course of the subdivision of T39N, R5E, which commenced Sept. 15, 1863 and was completed Sept. 20, 1863 by Alex Anderson, Deputy Surveyor.

Original bearing trees:

Aspen	10"	N14W	38 lks.
Aspen	10"	N1E	53 lks.



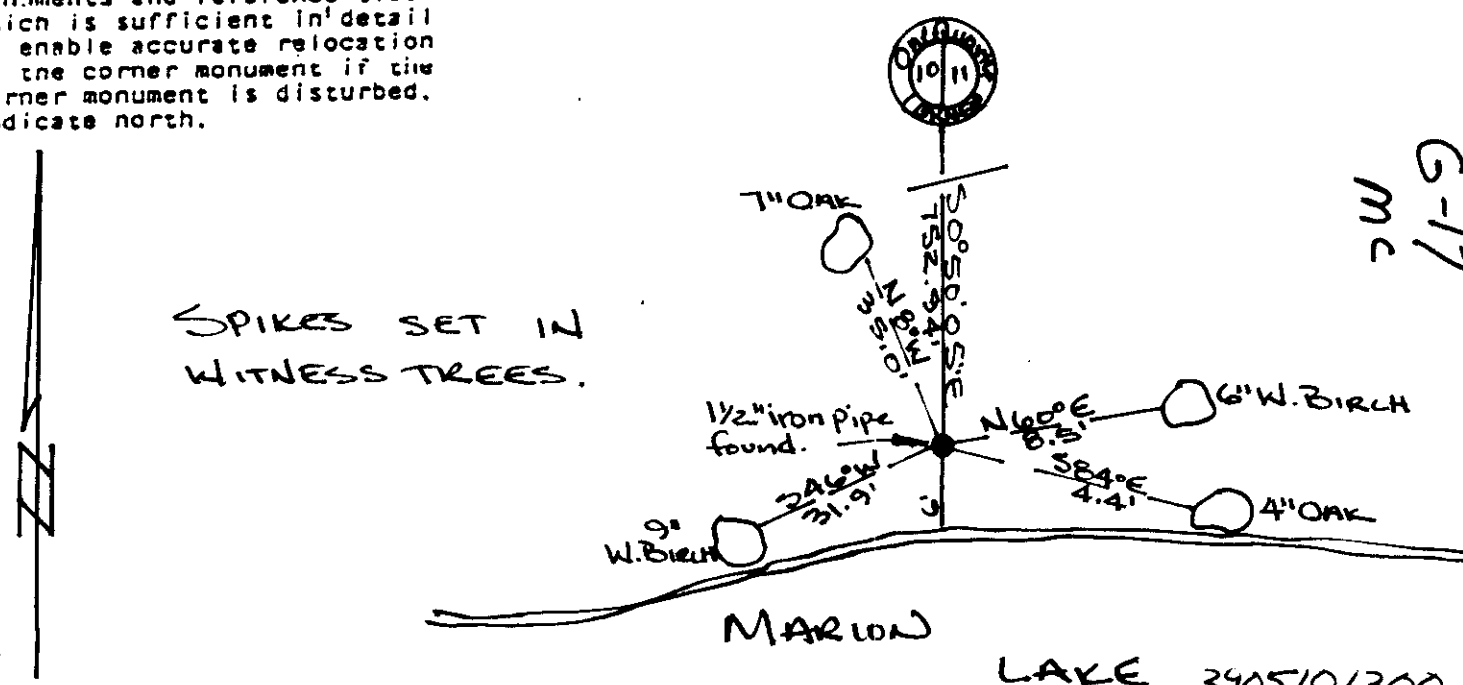
LOCATION SKETCH
(Location of landmark indicated by "●")

- (b) Describe any record evidence, monument evidence, occupational evidence, testimonial evidence or any other material evidence you considered, and whether the monument was found or placed.

Monument accepted through a found, perpetuated location.

- (c) In the plan view drawing below, provide reference ties to at least 4 witness monuments, or, if the location is within a municipality, to at least 2 witness monuments. (Witness monuments shall be made of concrete, natural stone, iron or other equally durable material, except wood.) Describe witness monuments.

- (d) Show a plan view drawing depicting the relevant monuments and reference ties which is sufficient in detail to enable accurate relocation of the corner monument if the corner monument is disturbed. Indicate north.



(e) Describe any discrepancy between the location of the corner as restored or reestablished and the location of that corner as previously restored or reestablished by distance and direction. Show the discrepancy on the plan view being under (d), above. Show the distances between the corner as previously restored or reestablished and (1) the corner as restored or reestablished, and (2) to at least 2 of the witness monuments shown on the drawing in (d), above.

See (d)

(f) Was the corner restored through acceptance of (1) an obliterated evidence location, or, (2) a found perpetuated location?

A found perpetuated location.

(g&h) Was the corner reestablished through lost corner proportionate methods? If so, show the method, including the directions and distances to other public land survey corners used as evidence or used for proportioning in determining the corner location?

See (f)

ONEIDA COUNTY, WIS.

Received for Record the 27th
 of July A.D. 1984
 at 9:30 o'clock, A.M. and Record of
 _____ of _____
 _____ of _____

Compared with all record data and accepted as correct.

Robert H. Winat
 Robert H. Winat, Oneida Co. Surv.
 25 July 1984

I, David W. Dionne

(1) (type or print name) certify that the corner location shown on this record was determined by me or under my direction and control and that this U.S. Public Land Survey Monument Record is correct and complete to the best of my knowledge and belief.

David W. Dionne 6/13/84
 Signature Date

