

# U. S. PUBLIC LAND SURVEY MONUMENT RECORD

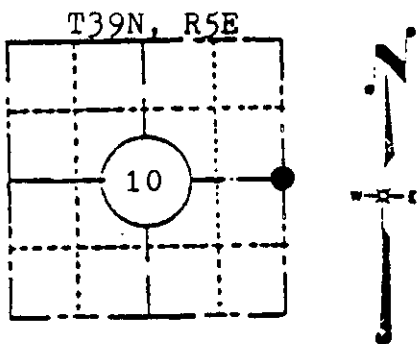
**INSTRUCTIONS:** This record shall show the location of the corner and shall include all of the following nine elements (a through i).

(a) Identify the corner by reference to the U.S. public land survey system.

Original corner was established in the course of the subdivision of T39N, R5E, which commenced Sept. 15, 1863 and was completed Sept. 20, 1863 by Alex Anderson, Deputy Surveyor.

Original bearing trees:

Aspen	9"	N79W	54 lks.
Aspen	9"	N82W	75 lks.



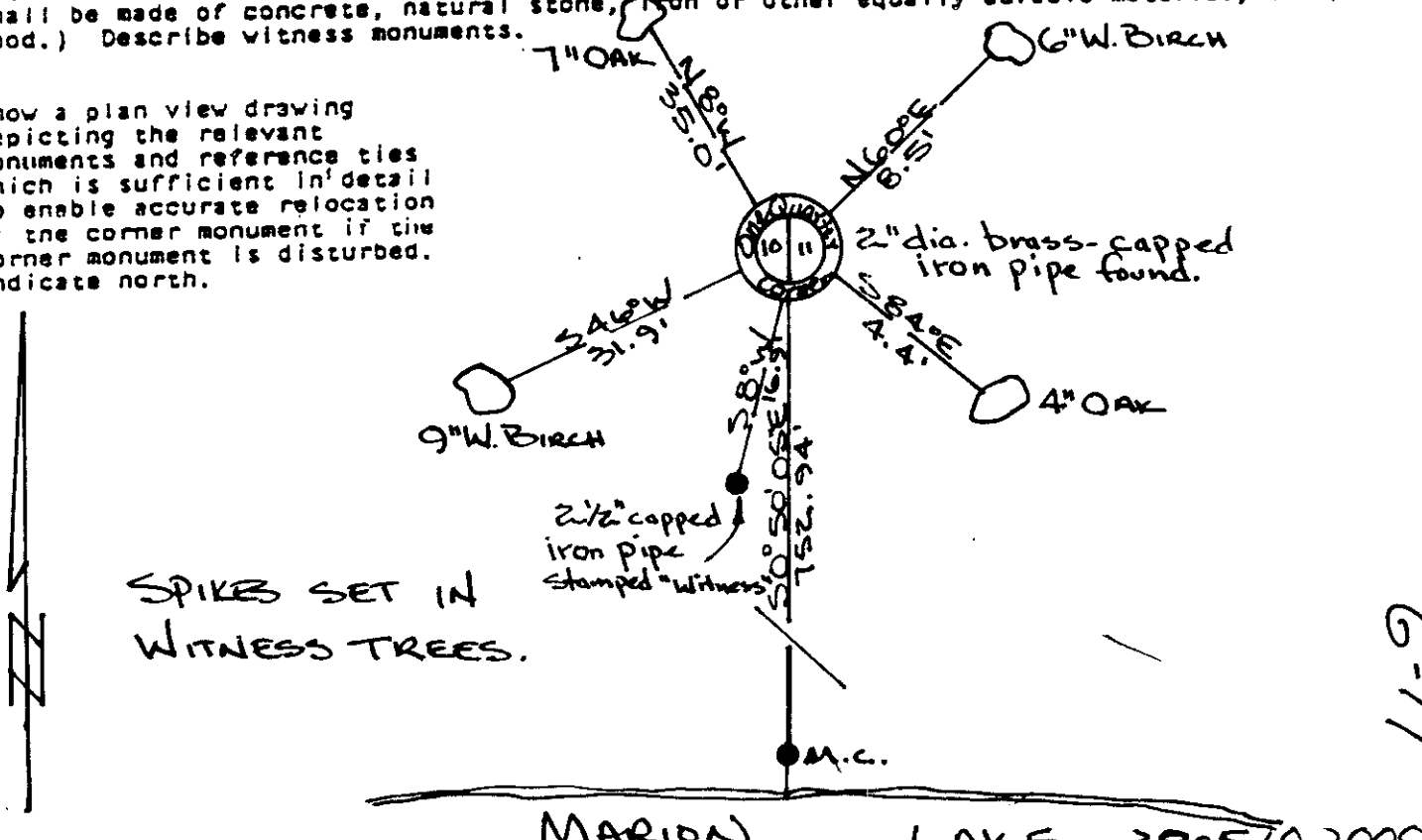
LOCATION SKETCH  
(Location of landmark indicated by "●")

(b) Describe any record evidence, monument evidence, occupational evidence, testimonial evidence or any other material evidence you considered, and whether the monument was found or placed.

Monument accepted through a found, perpetuated location.

(c) In the plan view drawing below, provide reference ties to at least 4 witness monuments, or, if the location is within a municipality, to at least 2 witness monuments. (Witness monuments shall be made of concrete, natural stone, iron or other equally durable material, except wood.) Describe witness monuments.

(d) Show a plan view drawing depicting the relevant monuments and reference ties which is sufficient in detail to enable accurate relocation of the corner monument if the corner monument is disturbed. Indicate north.



SPIKES SET IN  
WITNESS TREES.

(e) Describe any [unclear] discrepancy between the location of the corner as restored or reestablished and the location of that corner as previously restored or reestablished by distance and direction. Show the discrepancy on the plan view being under (u), above. Show the distances between the corner as previously restored or reestablished and (1) the corner as restored or reestablished, and (2) to at least 2 of the witness monuments shown on the drawing in (d), above.

See (d)

(f) Was the corner restored through acceptance of (1) an obliterated evidence location, or, (2) a found perpetuated location?

A found perpetuated location.

(g&h) Was the corner reestablished through lost corner proportionate methods? If so, show the method, including the directions and distances to other public land survey corners used as evidence or used for proportioning in determining the corner location?

See (f)

ONEIDA COUNTY, WIS.

Received for Record the 27th  
day of July A.D. 1984  
at 9:30 A.M. and Recorded in  
[unclear] on page [unclear]  
[unclear]

Compared with all record data and accepted as correct.

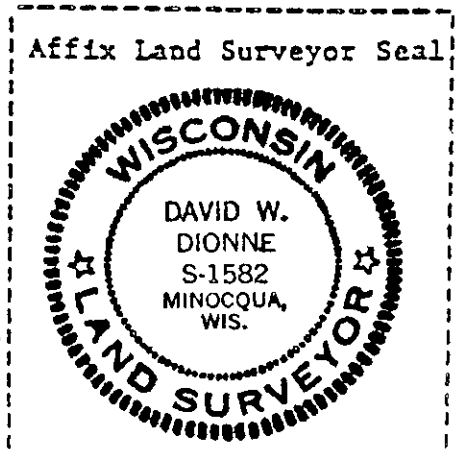
Robert H. Winat  
Robert H. Winat, Oneida Co. Surv.  
26 July 1984

David W. Dionne

(i) I, David W. Dionne (type or print name) certify that the corner location shown on this record was determined by me or under my direction and control and that this U.S. Public Land Survey Monument Record is correct and complete to the best of my knowledge and belief.

David W. Dionne  
Signature

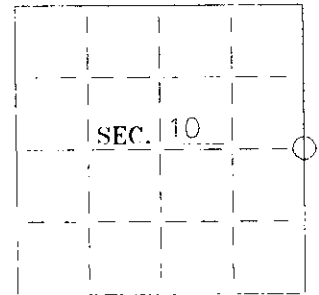
6/13/84  
Date



# U. S. PUBLIC LAND SURVEY MONUMENT RECORD

Note: This form is intended and designed to fulfill all requirements of Wisconsin Administrative Code—Chapter A E 7.08 U. S. Public Land Survey Monument Record (3)(a)(b)(c)(d)(e)(f)(g)(h)(i). An additional sheet may be added if necessary to conform with said requirements.

(a) CORNER LOCATION: State Plane Coordinates  
E 1/4 corner of Sec. 10 X \_\_\_\_\_  
 Township 39 North Y \_\_\_\_\_  
 Range 05 East Datum Base \_\_\_\_\_  
 Town/City Minocqua County of Oneida



(b) HISTORY OF ORIGINAL CORNER ESTABLISHMENT:  
 Original Surveyor: Alexander Anderson  
 Date of Survey: Commenced Sept 1863  
 Completed Sept 1863

Original B.T.'S  
 Aspen 9 N79°W 54 links  
 Aspen 9 N82°W 75 links

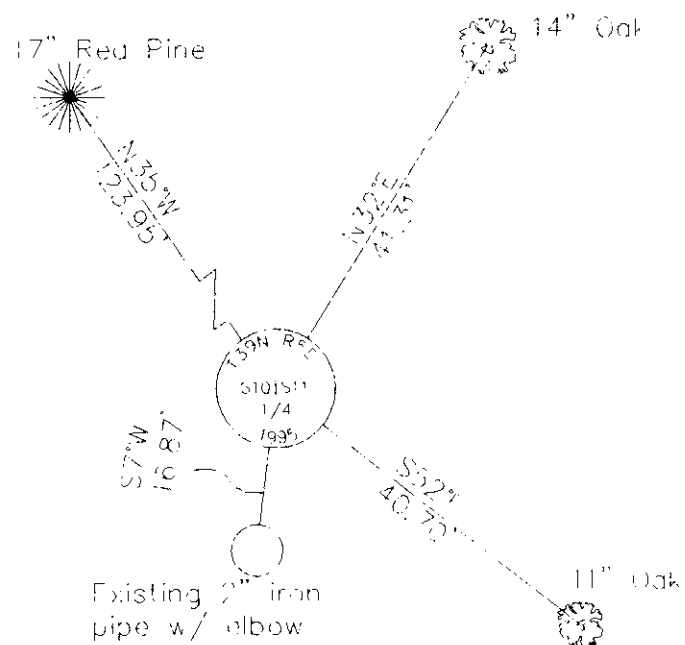
(b)(f)(g)(h) Description of monument found at this corner and if it was accepted—state all evidence (material—testimonial—occupation—plats—records—other monuments) used as a basis for accepting. If not accepted or if nothing was found state evidence used as basis for establishing location. If reestablished through lost corner propertunatemethods indicate all monuments—distances and directions used to establish. Indicate type of monument and sign post found or set.

November 1, 1995

Found an unmarked 2" brass capped iron pipe previously restored by David W. Dionne. The bearing trees referenced on the restoration form are actually at the meander corner /50' to the south. No record of his true bearing trees can be found. Dionne accepted the corner through a found, perpetuated location. A 2-1/2" iron pipe stamped "WITNESS" does match one of the witness calls on Dionne's restoration form.

Set a 2-1/2" dia. by 30" long, aluminum capped Oneida County Monument in place of the 2" brass capped iron pipe.  
 Set plastic sign post 1' northwest

(c)(d)(e) Plan view of corner with ties to at least 4 witness monuments. If in disagreement with previously established corner—show the distances between the two corners and also indicate the ties to the disputed.

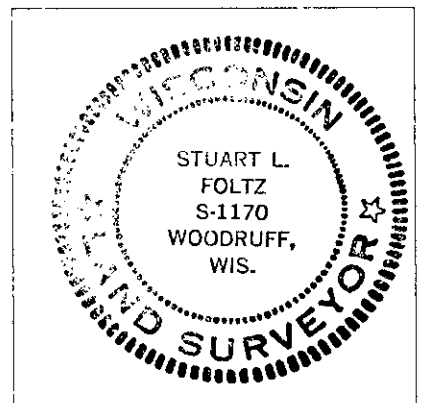


Set 16d galvanized nails in side of bearing trees.  
 Placed survey marker plaques on front face of bearing trees.

(i) I Stuart L. Foltz hereby certify that the corner location on this record was determined by me or under my direction and control and that this U.S. Public Land Survey Monument Record is correct and complete to the best of my knowledge and belief.

*Stuart L. Foltz*  
 Signature

12-20-95  
 Date



INDEX NC 9-17

3905102000