

U.S. PUBLIC LAND SURVEY MONUMENT RECORD

Note: This form is intended and designed to fulfill all requirements of Wisconsin Administrative Code, Chapter A-E 7.08 U.S. Public Land Survey Monument Record (3) (a) (b) (c) (d) (e) (f) (g) (h) (i). An additional sheet may be added if necessary to conform with said requirements.

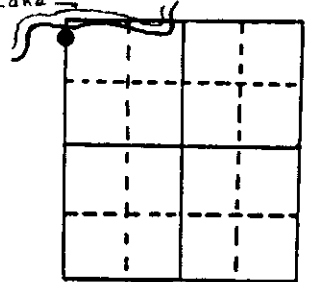
(a) Corner location: Township 39 North

Range 5 East/West

Town/City/Village Minocqua

County Oneida

REGISTER OF DEEDS OFFICE
ONEIDA COUNTY, WIS.
FILED
MAY 23 1991
At _____ O'Clock _____ M
THOMAS H. LEIGHTON
REGISTER OF DEEDS



Section 11

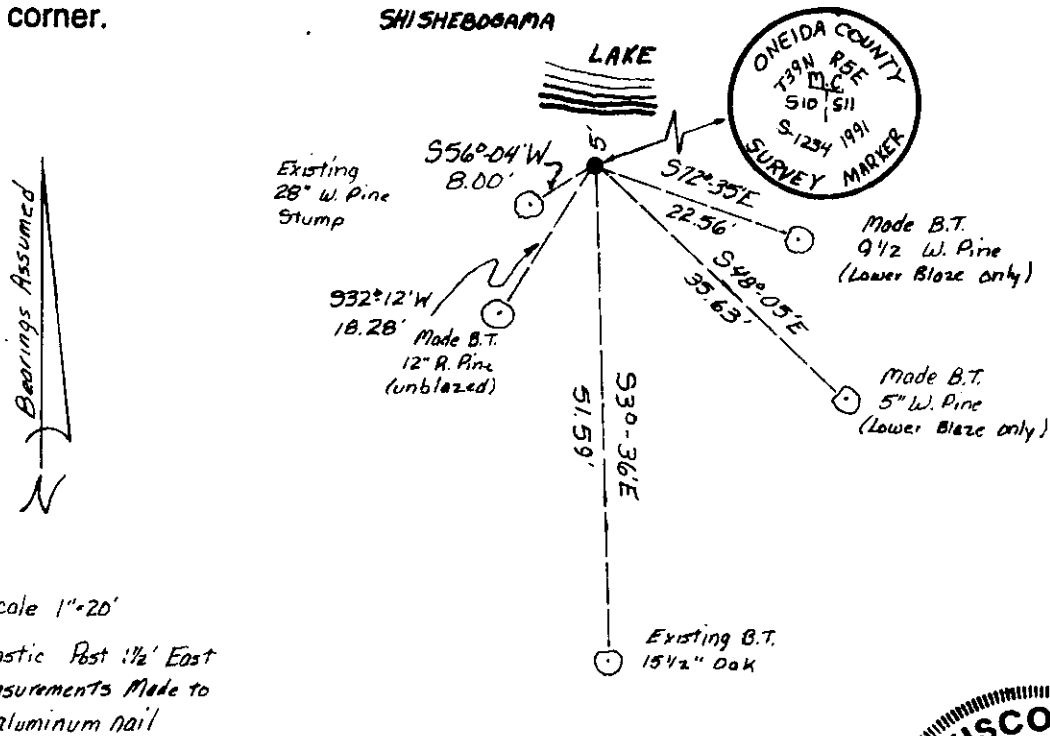
(b) (f) (g) (h) Description of monument found at this corner and if it was accepted, state all evidence (material, testimonial, occupational, plats, records, other monuments) used as a basis for accepting. If not accepted or if nothing was found, state evidence used as basis for establishing location. If reestablished through lost corner proportionate methods, indicate all monuments, distances and directions used to establish. Indicate type of monument found or set and sign post.

Sept. 1863; Alexander Anderson (Deputy Surveyor) set meander corner. (Birch 10" corner no bearings)

May 1943; E.F. Kowalke (Surveyor) in field book #1, page March 9th drove 1 1/4" square Iron Rod into Birch stump Testimony of Eugene Johnson resident since 1898. Witness W.Pine 8" S54°W 11.5 Lks, 7.6', Black Oak 8" S6°E 78.5 Lks, 51.8'.

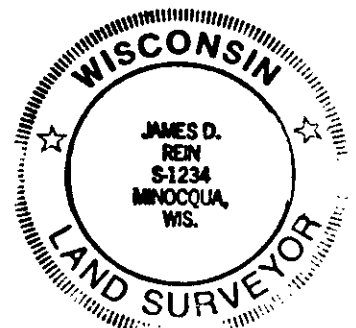
April 1991; James D. Rein (Registered Land Surveyor) found a 1 1/4" square Iron Rod. Replaced with Oneida County Aluminum Monument, set plastic post 1 1/2' East. Existing Bearing Trees: 15 1/2" Oak S3°-36'E 51.59', W.Pine stump 28" S56°-04'W 8.00'.

(c) (d) (e) Plan view of corner with ties to at least 4 witness monuments. If in disagreement with previously established corner, show the distances between the two corners and also indicate the ties to the disputed corner.



(i) I, James D. Rein, Registered Land Surveyor S-1234 (type or print name) certify that the corner location on this record was determined by me or under my direction and control and that this U.S. Public Land Survey Monument Record is correct and complete to the best of my knowledge and belief.

James D. Rein 4/18/91
Signature Date



3905103600

Stamp

Index No. E-F-17

U.S. PUBLIC LAND SURVEY MONUMENT RECORD

REGISTER OF DEEDS OFFICE
ONEIDA COUNTY
FILED

OCT 03 2018

KYLE J. FRANSON
REGISTER OF DEEDS

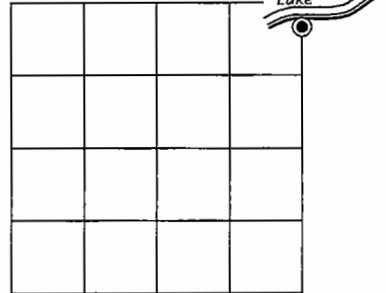
(a) CORNER LOCATION:

Meander Corner of Section 10
Township 39 North
Range 5 East
Town of Minocqua
County of Oneida

North:
East:
Datum:
GNSS Method:
GNSS Control:

(RECORDING AREA)

SECTION 10 *Shishebogama Lake*



(b) HISTORY OF ORIGINAL CORNER ESTABLISHMENT

Original Surveyor:
Date of Survey: Commenced
Completed
Original B.T.'S

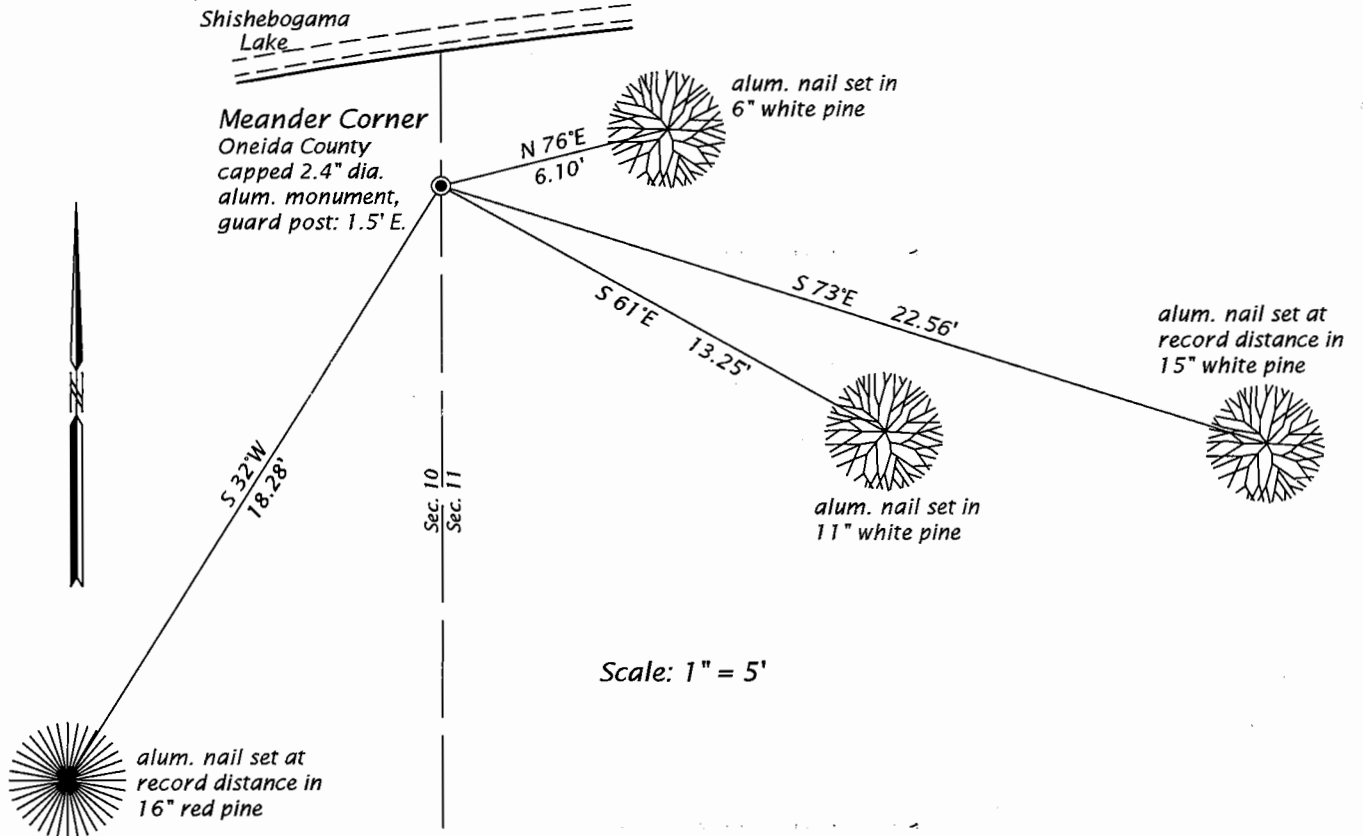
SEE PREVIOUS U.S.P.L.S. MONUMENT RECORD DATED APRIL 18, 1991.

(f)(g)(h) DESCRIPTION OF MONUMENT FOUND AT THIS CORNER AND IF IT WAS ACCEPTED, STATE ALL EVIDENCE (MATERIAL, TESTIMONIAL, OCCUPATIONAL, PLATS, RECORD, OTHER MONUMENTS) USED AS A BASIS FOR ESTABLISHING LOCATION. IF NOT ACCEPTED OR IF NOTHING WAS FOUND, STATE EVIDENCE USED AS BASIS FOR ESTABLISHING LOCATION. IF REESTABLISHED THROUGH LOST CORNER PROPORTIONATE METHODS, INDICATE ALL MONUMENTS, DISTANCES AND DIRECTIONS USED TO ESTABLISH. INDICATE TYPE OF MONUMENT AND SIGN POST FOUND OR SET.

This is a perpetuation of a previous U.S.P.L.S. Monument Record by James D. Rein, RLS, dated April 18, 1991, and filed in the office of the Oneida County Register of Deeds. A complete history of the corner can be found on the previous monument record. I accept the previous location as a true and faithful perpetuation or reestablishment of the original corner location and further perpetuate it as follows.

August 2, 2018, I, James D. Rein, P.L.S. No. S-1234, found and accepted the Oneida County capped aluminum monument I set in 1991. Several of the bearing trees from 1991 are now gone - see below for updated witnesses.

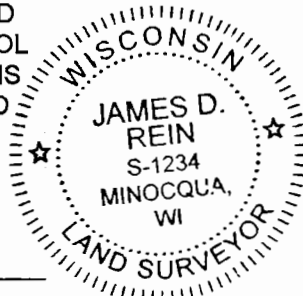
(c)(d)(e) PLAN VIEW OF CORNER WITH TIES TO AT LEAST 4 WITNESS MONUMENTS. IF IN DISAGREEMENT WITH PREVIOUSLY ESTABLISHED CORNER, SHOW THE DISTANCE BETWEEN THE TWO CORNERS AND ALSO INDICATE THE TIES TO THE DISPUTED CORNER.



(i) I, JAMES D. REIN, PROFESSIONAL LAND SURVEYOR NO. S-1234 HEREBY CERTIFY THAT THE CORNER LOCATION ON THIS RECORD WAS DETERMINED BY ME OR UNDER MY DIRECTION AND CONTROL AND THAT THIS U.S. PUBLIC LAND SURVEY MONUMENT RECORD IS CORRECT AND COMPLETE TO THE BEST OF MY KNOWLEDGE AND BELIEF.

[Handwritten Signature]
SIGNATURE

8-24-18
DATE



INDEX NO. E-F 17
3905103600