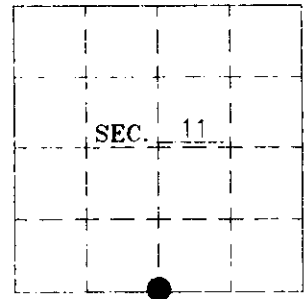


U. S. PUBLIC LAND SURVEY MONUMENT RECORD

Note: This form is intended and designed to fulfill all requirements of Wisconsin Administrative Code—Chapter A—E 7.08 U. S. Public Land Survey Monument Record (3(a)(b)(c)(d)(e)(f)(g)(h)(i). An additional sheet may be added if necessary to conform with said requirements.

(a) CORNER LOCATION: State Plane Coordinates
 South 1/4 corner of Sec. 11 X _____
 Township 39 North Y _____
 Range 5 East Datum Base _____
 Town Minocqua County of Oneida

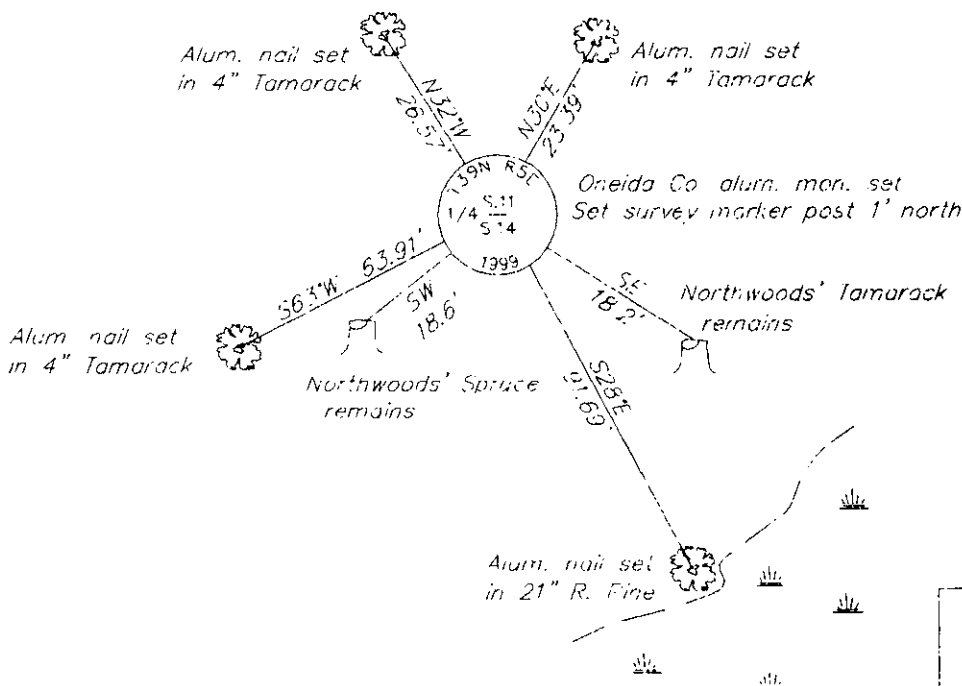


(b) HISTORY OF ORIGINAL CORNER ESTABLISHMENT: Original B.T.'S
 Original Surveyor: Alex Anderson
 Date of Survey: Commenced 1863
 Completed 1863
 6" Tamarack, S30-1/2°W, 21 lks.
 6" Tamarack, N57°E, 29 lks

(b)(f)(g)(h) Description of monument found at this corner and if it was accepted—state all evidence (material—testimonial—occupation—plats—records—other monuments) used as a basis for accepting. If not accepted or if nothing was found state evidence used as basis for establishing location. If reestablished through lost corner proportionate methods indicate all monuments—distances and directions used to establish. Indicate type of monument and sign post found or set.

- 1863 – Alex Anderson set 1/4 section post.
- 1961 – Northwoods Surveyors recovered 1/4 section post and set a 2" iron pipe and made two new bearing trees; an 8" Tamarack, S58°E, 18.2' and a 10" Spruce, S52°W, 18.6'.
- 1983 – W.H. Stath found an iron pipe at the 1/4 corner location.
- 1999 – I found and accepted a 2" iron pipe and wood post and recovered the dead remains of Northwoods' 1961 Tamarack and Spruce bearing trees. I replaced the 2" iron pipe with an Oneida County Alum. Mon. and made four new bearing trees as shown below.

(c)(d)(e) Plan view of corner with ties to at least 4 witness monuments. If in disagreement with previously established corner—show the distances between the two corners and also indicate the ties to the disputed.



REGISTER OF DEEDS OFFICE
 ONEIDA COUNTY, WIS.
FILED
 OCT 29 1999
 At _____ O'Clock _____ M
 THOMAS H. LEIGHTON
 REGISTER OF DEEDS

WISCONSIN
 CHARLES L. WINKLER
 S-1431
 MINOCQUA, WIS.
 LAND SURVEYOR

INDEX NO T 19

(i) I Charles E. Winkler S-1431 hereby certify that the corner location on this record was determined by me or under my direction and control and that this U.S. Public Land Survey Monument Record is correct and complete to the best of my knowledge and belief.

Signature Charles E. Winkler Date 10/15/1999
 Foltz & Associates, Inc.

3905110020