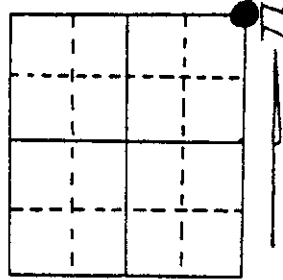


U.S. PUBLIC LAND SURVEY MONUMENT RECORD

Note: This form is intended and designed to fulfill all requirements of Wisconsin Administrative Code, Chapter A-E 5.02, U.S. Public Land Survey Monument Record (3) (a) (b) (c) (d) (e) (f) (g) (h) (i). An additional sheet may be added if necessary to conform with said requirements.

(a) Corner location: Township 39 North
 Range 5 East/West

Town/City/Village Minocqua
 County Cneida



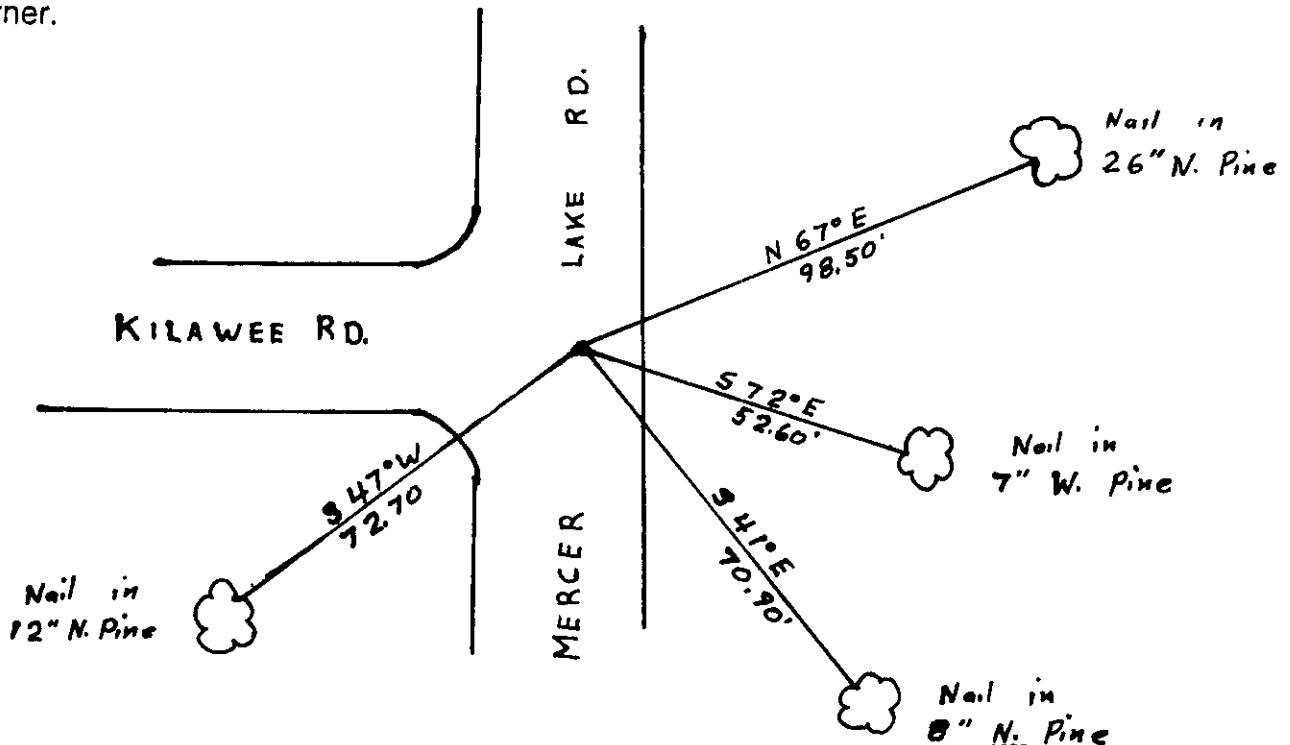
Section 13

(b) (f) (g) (h) Description of monument found at this corner and if it was accepted, state all evidence (material, testimonial, occupational, plats, records, other monuments) used as a basis for accepting. If not accepted or if nothing was found, state evidence used as basis for establishing location. If reestablished through lost corner proportionate methods, indicate all monuments, distances and directions used to establish.

Established corner by doubling distance from East One Quarter Section 12 to South One Sixteenth 1316.60 feet south. Also checked distance South to East One Quarter Section 13, and distance West to One Sixteenth. Set railroad Spike for Section Corner.

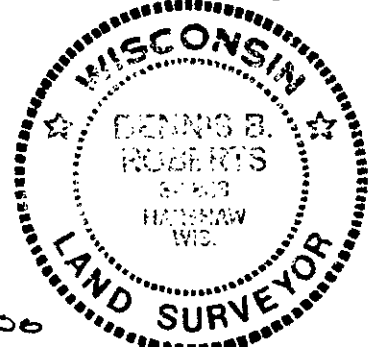
Norway Pine	26" scribed 1x1	N67°E	98.50 feet
East One Quarter Section 12	Steel cap	N2°13'07"W	2633.20 feet
South One Sixteenth Sections 7 and 12		N2°13'07"W	1316.60 feet
East One Sixteenth Sections 12 and 13		S84°26'10"W	1341.40 feet
East One Quarter Section 13	Railroad Spike		
		S1°52'20"E	2641.59 feet

(c) (d) (e) Plan view of corner with ties to at least 4 witness monuments. If in disagreement with previously established corner, show the distances between the two corners and also indicate the ties to the disputed corner.



(i) I, Dennis B. Roberts
 (type or print name) certify that the corner location on this record was determined by me or under my direction and control and that this U.S. Public Land Survey Monument Record is correct and complete to the best of my knowledge and belief.

Dennis B. Roberts 1/14/86
 Signature Date



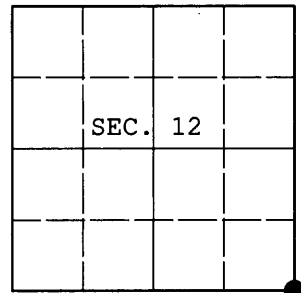
Index No. J-25

390512 0006

U.S. PUBLIC LAND SURVEY MONUMENT RECORD

Note: This form is intended and designed to fulfill all requirements of Wisconsin Administrative Code, Chapter A-E 7.08 U.S. Public Land Survey Monument Record (3) (a) (b) (c) (d) (e) (f) (g) (h) (i). An additional sheet may be added if necessary to conform with said requirements.

(a) CORNER LOCATION: Plane Coordinates
 Cor. of Secs. 7, 12, 13 & 18 N:
 Township 39 North E:
 Range 5 & 6 East of the 4th P.M. Datum:
 Town of Minocqua County of Oneida



(b) HISTORY OF ORIGINAL CORNER ESTABLISHMENT

Original Surveyor: Alfred Millard Original Accessories:
 Date of Survey: Commenced: Sept., 1860 aspen 9" S5°E, 9 lks.
 Completed: Sept., 1860 aspen 7" S30°W, 6 lks.
 aspen 9" N78°W, 13 lks.
 y. pine 7" N52°E, 28 lks.

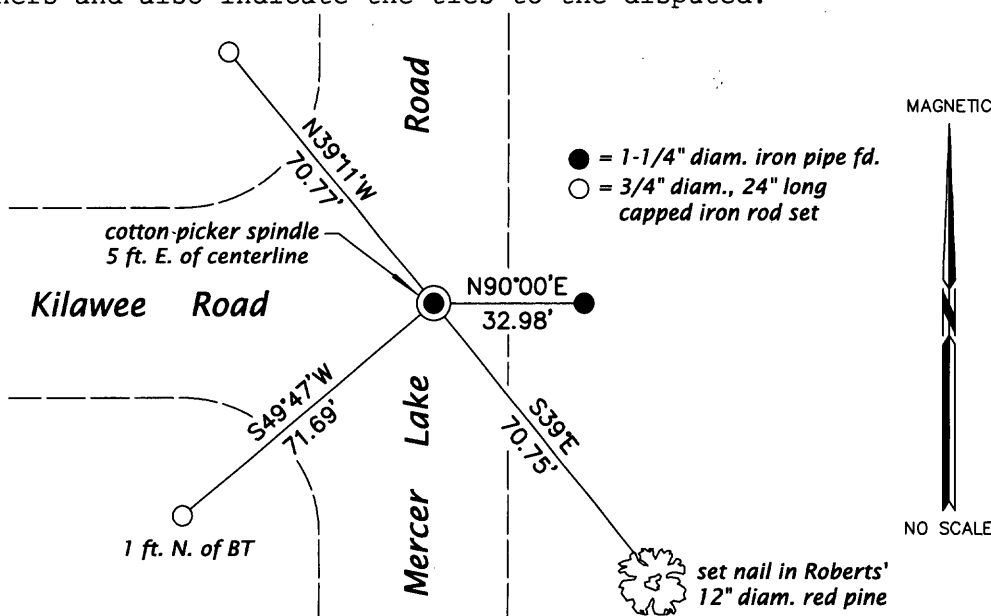
(b) (f) (g) (h) Description of monument found at this corner and if it was accepted, state all evidence (material, testimonial, occupational, plats, records, other monuments) used as a basis for accepting. If not accepted or if nothing was found, state evidence used as basis for establishing location. If re-established through lost corner proportionate methods, indicate all monuments, distances and directions used to establish. Indicate type of monument and sign post found or set.

NOTE: This is a perpetuation of a previous USPLS Monument Record by Dennis B. Roberts, RLS dated January 14, 1986 and filed in the office of the Oneida County Register of Deeds. A complete history of the corner can be found on the previous monument record. I accept the previous location as a true and faithful perpetuation or reestablishment of the original corner location and further perpetuate it as follows.

May 19, 2011: Prior to road construction, I found and accepted a Berntsen "survey mark" nail in the pavement of Mercer Lake Road. I found or established accessories as shown below and set a white plastic sign post adjacent to the easterly reference monument.

August 14, 2011: I set a cotton picker spindle in the new pavement at the corner point.

(c) (d) (e) Plan view of corner with ties to at least 4 witness monuments. If in disagreement with previously established corner, show the distances between the two corners and also indicate the ties to the disputed.



REGISTER OF DEEDS OFFICE
 ONEIDA COUNTY
FILED
 JAN 16 2012
 AT _____ O'CLOCK _____ M
 THOMAS H. LEIGHTON
 REGISTER OF DEEDS

(i) I, Jeffrey W. Austin, Registered Land Surveyor No. S-1885, hereby certify that the corner location on this record was determined by me or under my direction and control and that this U.S. Public Land Survey Monument Record is correct and complete to the best of my knowledge and belief.


 Signature

DEC. 31, 2011
 Date

