

CERTIFIED LAND CORNER RESTORATION

State of Wisconsin }
County of Oneida } ss.

I James D. Rein, do hereby certify that on the 9th day of April, 19 81, I found evidence of the South one-quarter corner of Section 12 Township 39North, Range 5 East, Fourth Principal Meridian, as described hereon; and that from this evidence I established a new monument and accessories as described hereon to perpetuate the original location of this corner:

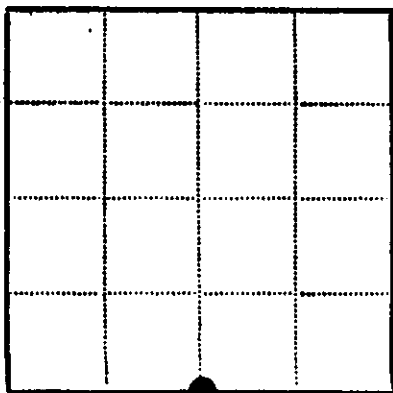
Description of original monument and accessories and subsequent restorations:
Sept. 15, 1863 - Alex Anderson, Deputy Surveyor (Records from commissioners of Public Lands Madison, shows corner in Lake) Oneida County Certified copy reads "over lake and set meander corner (1/4) "wit. by a Tamarack 9", S33°W, 67 lks (44.22 feet) and by a Tamarack 7", N79°W, 70 lks (46.20 feet)
Dec. 2, 1907-D. H. Vaughan, Oneida County Surveyor in Section 13 found N 1/4 P. original trees.
Sept. 12, 1953-E. F. Kowalkee, Land Surveyor survey notes for Carl Griffin show Tamarack post and iron pipe in swamp west of pond.

Description of corner evidence found:

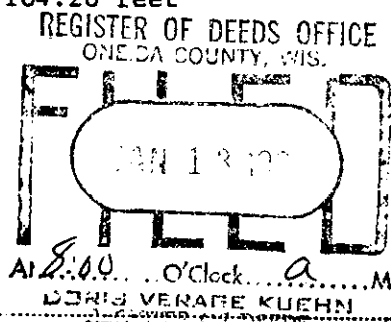
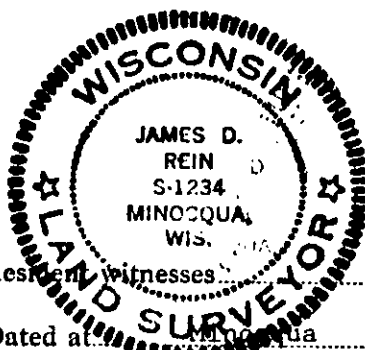
1-1/4" diameter iron pipe down 6" and 3 1/2" square Tamarack Post up 2 1/2 feet, scribed "1/4 S12 S13K" in swamp +/- 65 feet west of small lake.
No evidence of original trees.

Description of monument and accessories I established to perpetuate the location of this corner:

Set 2" diameter and 72" long Bernstein Drive Point Aluminum Monument with 3 1/2" diameter cap up 12 inches.
Made bearing trees scr "1/4 S BT" with P.K. nail set in lower blaze as follows:
4" Tamarack S57°E, 25.87 feet
4" Tamarack S74°W, 31.34 feet
Northeaster corner of concrete block pump enclosure bears S30°W, 104.20 feet



● - Corner monument restored
□ -



Resident witnesses: _____

Dated at Minocqua, Wisconsin, this 11 day of May, 19 81.

Signature James D. Rein Title Reg. Land Surveyor
(County Surveyor, Registered Land Surveyor, or other duly authorized official)

Surveyors Registration No. S-1234

Office of _____ County of _____

I hereby certify that the within instrument was filed in this office for record on the _____ day of _____, 19 _____, and was filed in Book No. _____ Page No. _____ of County Records.

Signature _____ Title _____

Township _____, Range _____, Section _____, Index No. _____, Page No. _____

OCT 16 2017

AT _____ O'CLOCK _____ M
KYLE J. FRANSON
REGISTER OF DEEDS

U.S. PUBLIC LAND SURVEY MONUMENT RECORD

Note: This form is intended and designed to fulfill all requirements of the Wisconsin Administrative Code, Chapter A-E 7.08 U.S. Public Land Monument Record (3)(a)(b)(c)(d)(e)(f)(g)(h)(i). An additional sheet may be added if necessary to conform with said requirements.

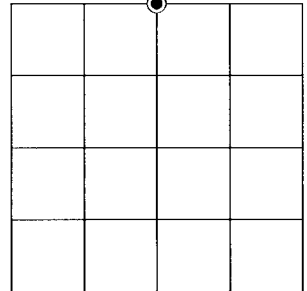
(a) CORNER LOCATION:

North Quarter Corner of Section 13
Township 39 North
Range 5 East
Town of Minocqua
County of Oneida

North:
East:
Datum:
GNSS Method:
GNSS Control:

(RECORDING AREA)

SECTION 13



(b) HISTORY OF ORIGINAL CORNER ESTABLISHMENT

Original Surveyor:
Date of Survey: Commenced _____
Completed _____
Original B.T.'S _____

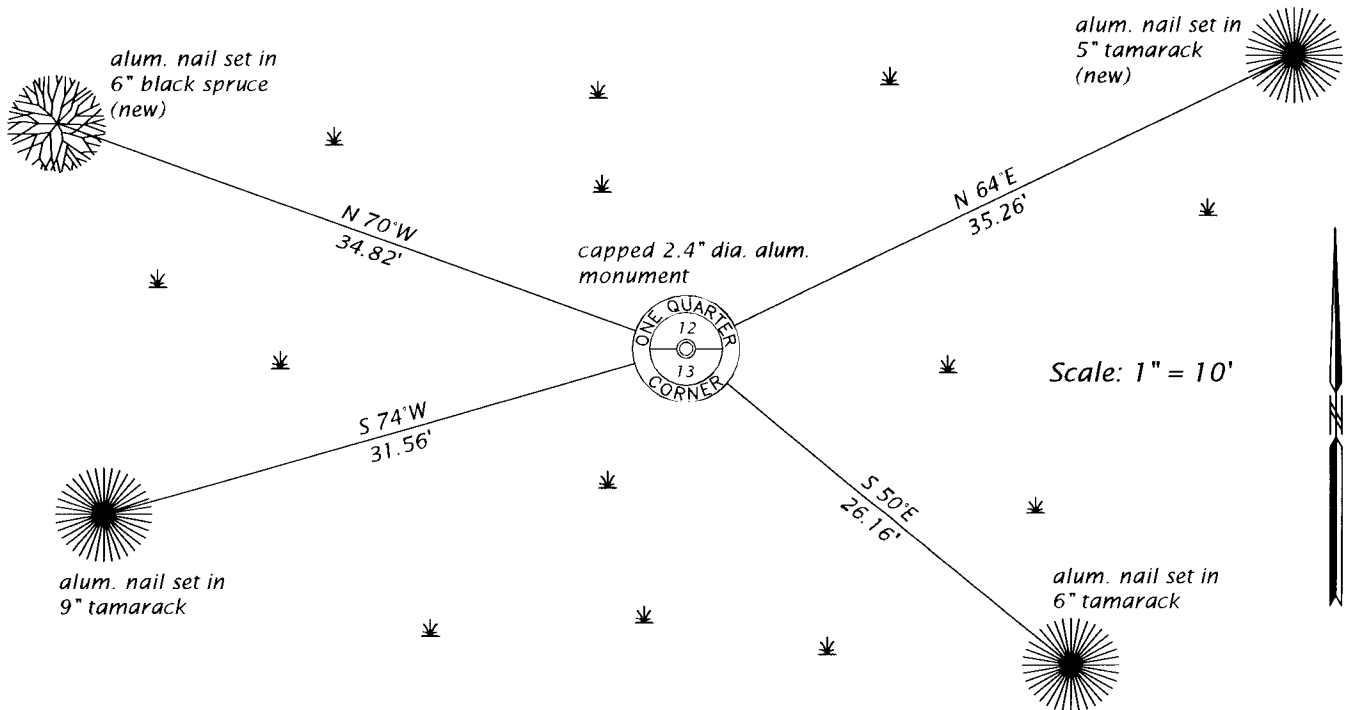
SEE PREVIOUS U.S.P.L.S. MONUMENT
RECORD DATED MAY 11, 1981.

(f)(g)(h) DESCRIPTION OF MONUMENT FOUND AT THIS CORNER AND IF IT WAS ACCEPTED, STATE ALL EVIDENCE (MATERIAL, TESTIMONIAL, OCCUPATIONAL, PLATS, RECORD, OTHER MONUMENTS) USED AS A BASIS FOR ESTABLISHING LOCATION. IF NOT ACCEPTED OR IF NOTHING WAS FOUND, STATE EVIDENCE USED AS BASIS FOR ESTABLISHING LOCATION. IF REESTABLISHED THROUGH LOST CORNER PROPORTIONATE METHODS, INDICATE ALL MONUMENTS, DISTANCES AND DIRECTIONS USED TO ESTABLISH. INDICATE TYPE OF MONUMENT AND SIGN POST FOUND OR SET.

This is a perpetuation of a previous U.S.P.L.S. Monument Record by James D. Rein, RLS, dated May 11, 1981, and filed in the office of the Oneida County Register of Deeds. A complete history of the corner can be found on the previous monument record. I accept the previous location as a true and faithful perpetuation or reestablishment of the original corner location and further perpetuate it as follows.

September 25, 2017, James D. Rein, PLS No. S-1234, found an accepted the previous capped aluminum monument. See below for updated and additional witnesses.

(c)(d)(e) PLAN VIEW OF CORNER WITH TIES TO AT LEAST 4 WITNESS MONUMENTS. IF IN DISAGREEMENT WITH PREVIOUSLY ESTABLISHED CORNER, SHOW THE DISTANCE BETWEEN THE TWO CORNERS AND ALSO INDICATE THE TIES TO THE DISPUTED CORNER.



(i) I, JAMES D. REIN, PROFESSIONAL LAND SURVEYOR NO. S-1234 HEREBY CERTIFY THAT THE CORNER LOCATION ON THIS RECORD WAS DETERMINED BY ME OR UNDER MY DIRECTION AND CONTROL AND THAT THIS U.S. PUBLIC LAND SURVEY MONUMENT RECORD IS CORRECT AND COMPLETE TO THE BEST OF MY KNOWLEDGE AND BELIEF.



James D. Rein 10-12-17
SIGNATURE DATE

INDEX NO. J-23
3905120020