

CERTIFIED LAND CORNER RESTORATION

State of Wisconsin }  
County of ONEIDA } ss.

I, JAMES D. REIN, do hereby certify that on the 9th day of April, 19 81, I found evidence of the East one-quarter corner of Section 12 Township 39 North, Range 5 East, Fourth Principal Meridian, as described hereon; and that from this evidence I established a new monument and accessories as described hereon to perpetuate the original location of this corner:

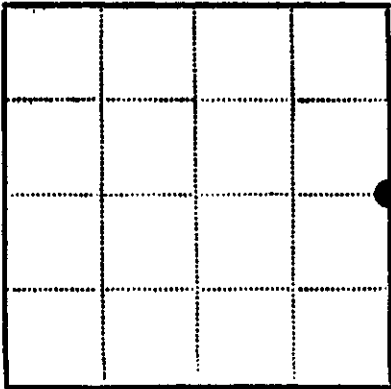
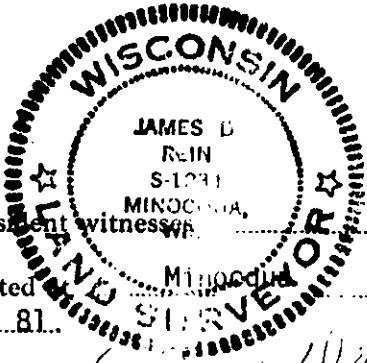
Description of original monument and accessories and subsequent restorations:  
Sept. 1860- Alfred Millard, Deputy surveyor, set wood post witnessed by an Aspen 10" N55°W, 52 lks (34.32 ft.) and by an Aspen 6" S10°E, 32 lks (21.12 ft.)  
Dec. 20, 1962- W. S. Cameron map in Section 7 identified corner as spike in road ixion, witnessed by a 14" Jack Pine S79°W, 48.7 feet.  
April 23, 1975- Plat of Tomahawk River Pines- in Section 7 - identifies corner as "iron rod with cap witnessed by an 18" Jack Pine S76°W, 52.3 feet and spike in Power pole #3905-12 E 31 N49°W, 36.80 feet.

Description of corner evidence found:  
2-3/4" diameter iron cap with + flush in asphalt roadbed +/- 5 feet east of existing roadbed centerline.  
18" Jack Pine S79°W, 52.30 feet  
8" Spike in Power Pole N49°W, 36.80 feet to head of nail.

Description of monument and accessories I established to perpetuate the location of this corner:

Set P.K. nail in existing 18" Jack Pine S79°W, 52.29 feet  
Made BTs Scr "1/4 S B.T." with P.K. nail set in lower blaze  
9" Jack Pine N60°W, 67.60 feet  
6" White Pine S26°E, 63.15 feet

REGISTER OF DEEDS OFFICE  
ONEIDA COUNTY, WIS.  
APR 1 1981  
At 8:00 O'Clock a.m.  
DORIS VERAE KUEHN  
REGISTER OF DEEDS



● - Corner monument restored  
□ -

Resident witness  
Dated May 11th day of May 19 81  
Signature [Signature] Title Reg. Land Surveyor  
(County Surveyor, Registered Land Surveyor, or other duly authorized official)  
Surveyors Registration No. S-1234

Office of \_\_\_\_\_ County of \_\_\_\_\_  
I hereby certify that the within instrument was filed in this office for record on the \_\_\_\_\_ day of \_\_\_\_\_ 19 \_\_\_\_\_, and was filed in Book No. \_\_\_\_\_ Page No. \_\_\_\_\_ of County Records.

Signature \_\_\_\_\_ Title \_\_\_\_\_

Township \_\_\_\_\_, Range \_\_\_\_\_, Section \_\_\_\_\_, Index No. \_\_\_\_\_, Page No. \_\_\_\_\_

Stock No. 26273

# U. S. PUBLIC LAND SURVEY MONUMENT RECORD

**INSTRUCTIONS:** This record shall show the location of the corner and shall include all of the following nine elements (a through i).

(a) Identify the corner by reference to the U.S. public land survey system.

West one quarter corner of Section 7, Township 39N, Range 6 East, Fourth Principal Meridian.

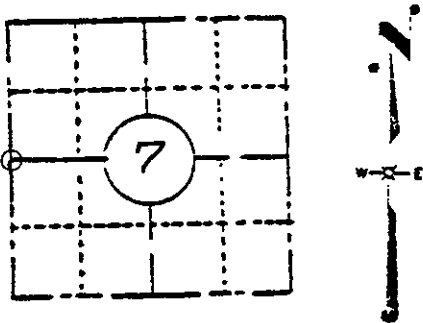
The original Government survey was performed by Alfred Millard, Deputy Surveyor in August 1860.

Wood Post Set:

Aspen	10"	N55°W	52 Links
Aspen	6"	S10°E	32 Links

Compared with all record data and accepted as correct.

*Robert H. Nimal* 18 JAN 84  
Oneida County Surveyor date



LOCATION SKETCH  
(Location of landmark indicated by "⊙")

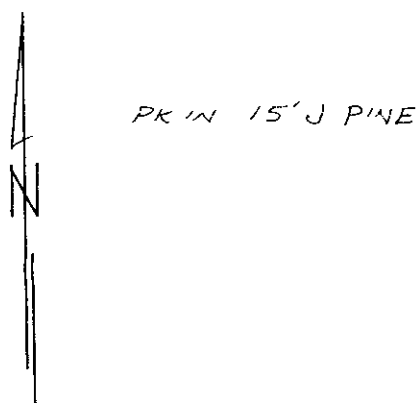
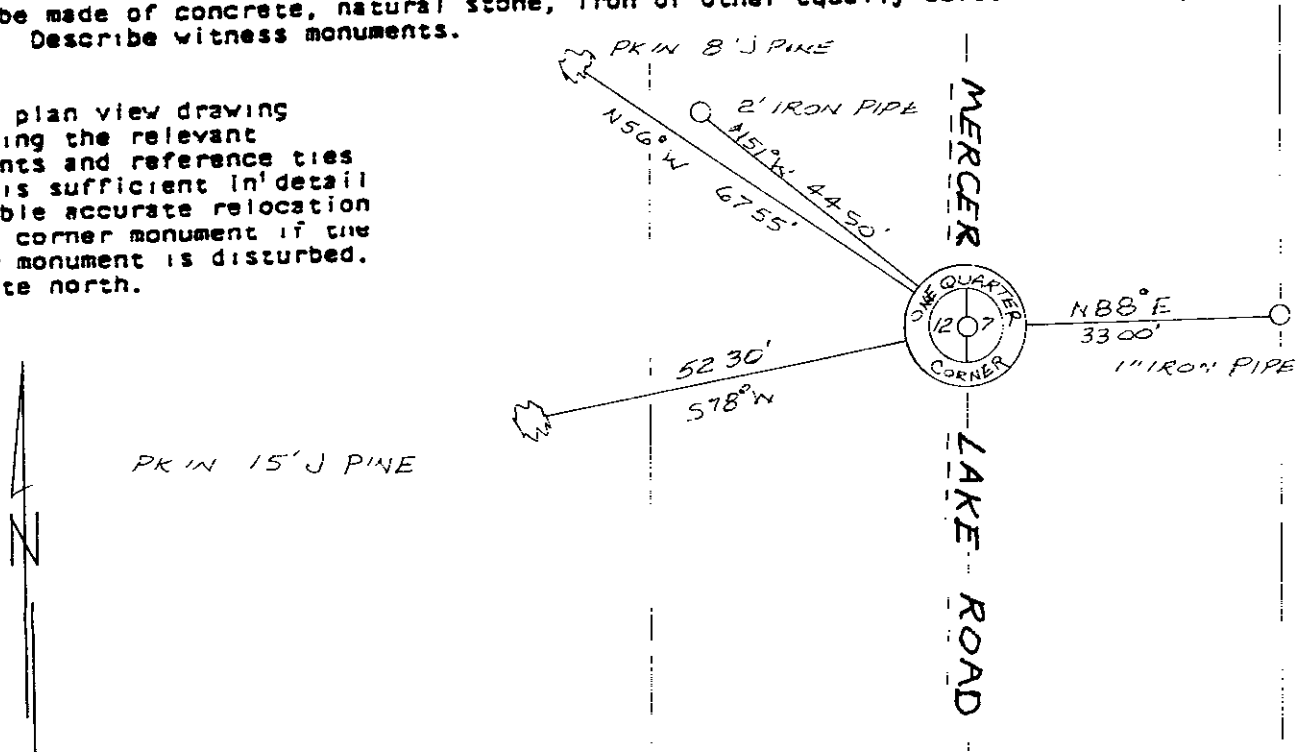
(b) Describe any record evidence, monument evidence, occupational evidence, testimonial evidence or any other material evidence you considered, and whether the monument was found or placed.

Iron Pipe with 2-1/2" iron cap found in place

PK in Jack Pine	15"	S78°W	52.30 feet
PK in Jack Pine	8"	N56°W	67.55 "
1" iron pipe		N88°E	33.00 "
2" iron pipe		N51°W	44.50 "

(c) In the plan view drawing below, provide reference ties to at least 4 witness monuments, or, if the location is within a municipality, to at least 2 witness monuments. (Witness monuments shall be made of concrete, natural stone, iron or other equally durable material, except wood.) Describe witness monuments.

(d) Show a plan view drawing depicting the relevant monuments and reference ties which is sufficient in detail to enable accurate relocation of the corner monument if the corner monument is disturbed. Indicate north.



(e) Describe any material discrepancy between the location of the corner as restored or reestablished and the location of that corner as previously restored or reestablished by distance and direction. Show the discrepancy on the plan view drawing under (d), above. Show the distances between the corner as previously restored or reestablished and (1) the corner as restored or reestablished, and (2) to at least 2 of the witness monuments shown on the drawing in (d), above.

See Drawing

(f) Was the corner restored through acceptance of (1) an obliterated evidence location, or, (2) a found perpetuated location?

Found perpetuated location

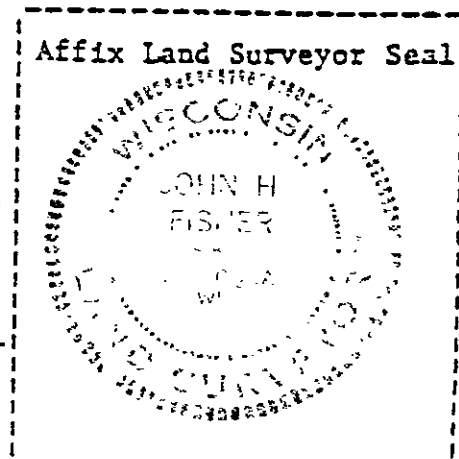
(g&h) Was the corner reestablished through lost corner proportionate methods? If so, show the method, including the directions and distances to other public land survey corners used as evidence or used for proportioning in determining the corner location?

No

REGISTERS OFFICE }  
Onondaga County, Wis. )  
Received for Record the 18<sup>th</sup> day of  
January A.D. 1984 at  
10<sup>00</sup> o'clock AM and recorded in  
Vol. \_\_\_\_\_ on page \_\_\_\_\_  
Louis George Kuehn  
Register

(i) I, John H. Fisher  
(type or print name) certify that the corner location shown  
on this record was determined by me or under my direction and  
control and that this U.S. Public Land Survey Monument Record  
is correct and complete to the best of my knowledge and belief.

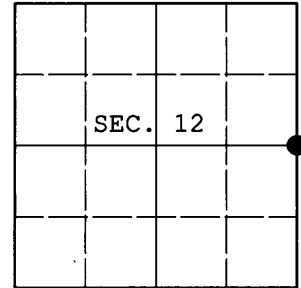
John H. Fisher 10/4/84  
Signature Date



**U.S. PUBLIC LAND SURVEY MONUMENT RECORD**

Note: This form is intended and designed to fulfill all requirements of Wisconsin Administrative Code, Chapter A-E 7.08 U.S. Public Land Survey Monument Record (3) (a) (b) (c) (d) (e) (f) (g) (h) (i). An additional sheet may be added if necessary to conform with said requirements.

(a) CORNER LOCATION: Plane Coordinates  
 1/4 Cor. of Secs. 7 & 12 N:  
 Township 39 North E:  
 Range 5 & 6 East of the 4th P.M. Datum:  
 Town of Minocqua County of Oneida



(b) HISTORY OF ORIGINAL CORNER ESTABLISHMENT

Original Surveyor: Alfred Millard Original Accessories:  
 Date of Survey: Commenced: Sept., 1860 aspen 10" N55°W, 52 lks.  
 Completed: Sept., 1860 aspen 6" S10°E, 32 lks.

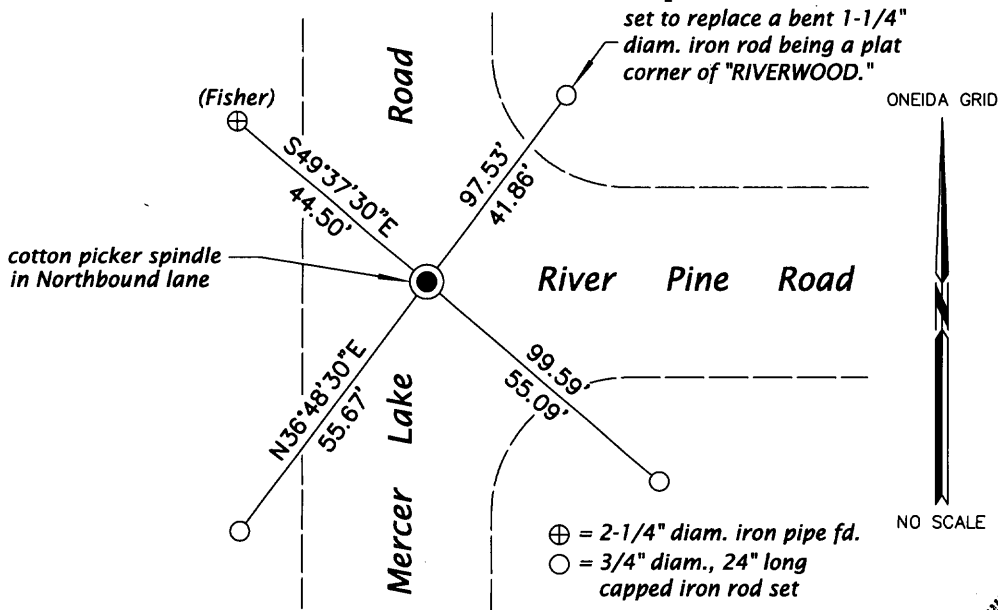
(b) (f) (g) (h) Description of monument found at this corner and if it was accepted, state all evidence (material, testimonial, occupational, plats, records, other monuments) used as a basis for accepting. If not accepted or if nothing was found, state evidence used as basis for establishing location. If re-established through lost corner proportionate methods, indicate all monuments, distances and directions used to establish. Indicate type of monument and sign post found or set.

NOTE: This is a perpetuation of a previous USPLS Monument Record by John H. Fisher, RLS dated October 4, 1983 and filed in the office of the Oneida County Register of Deeds. A complete history of the corner can be found on the previous monument record. I accept the previous location as a true and faithful perpetuation or reestablishment of the original corner location and further perpetuate it as follows.

May 19, 2011: Prior to road construction, I found and accepted a 3/4" diam., 24" long iron rod flush with the pavement of Mercer Lake Road. I found or established accessories as shown below and set a white plastic sign post adjacent to the westerly reference monuments.

August 15, 2011: I set a cotton picker spindle in the new pavement at the corner point.

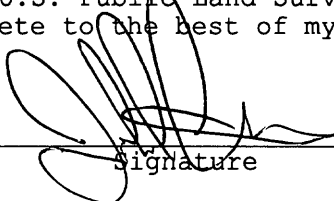
(c) (d) (e) Plan view of corner with ties to at least 4 witness monuments. If in disagreement with previously established corner, show the distances between the two corners and also indicate the ties to the disputed.



REGISTER OF DEEDS OFFICE  
 ONEIDA COUNTY  
**FILED**  
 JAN 16 2012  
 AT \_\_\_\_\_ O'CLOCK \_\_\_\_\_ M  
 THOMAS H. LEIGHTON  
 REGISTER OF DEEDS



(i) I, Jeffrey W. Austin, Registered Land Surveyor No. S-1885, hereby certify that the corner location on this record was determined by me or under my direction and control and that this U.S. Public Land Survey Monument Record is correct and complete to the best of my knowledge and belief.

  
 Signature

DEC. 31, 2011  
 Date