

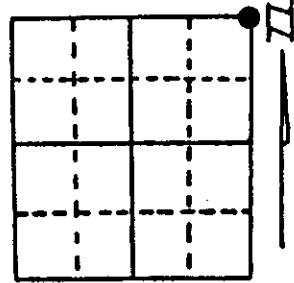
# U.S. PUBLIC LAND SURVEY MONUMENT RECORD

**Note:** This form is intended and designed to fulfill all requirements of Wisconsin Administrative Code, Chapter A-E 7.08 U.S. Public Land Survey Monument Record (3) (a) (b) (c) (d) (e) (f) (g) (h) (i). An additional sheet may be added if necessary to conform with said requirements.

(a) Corner location: Township 39 North  
 Range 5 East/West

Town/City/Village Minocqua

County Oneida



Northeast Corner of Section 24

(b) (f) (g) (h) Description of monument found at this corner and if it was accepted, state all evidence (material, testimonial, occupational, plats, records, other monuments) used as a basis for accepting. If not accepted or if nothing was found, state evidence used as basis for establishing location. If reestablished through lost corner proportionate methods, indicate all monuments, distances and directions used to establish. Indicate type of monument found or set and sign post.

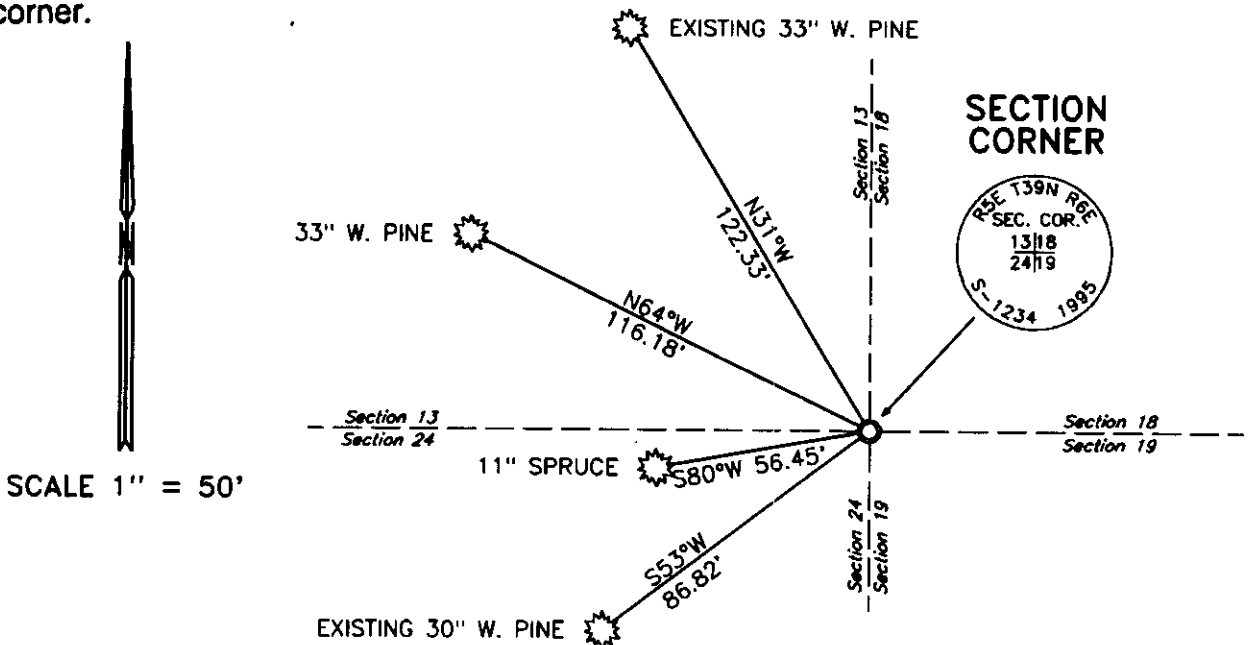
Sept. 24th, 1860: Alfred Millard, Deputy Surveyor, set post to Sections 13, 18, 19 & 24. Made bearing trees: 10" Aspen, N58°E, 22 links; 12" W. Birch, S60°W, 129 links.

Aug. 31st, 1926: D. S. Burnett, Surveyor, notes in old field Book #27 pages 109-113, identify section corner as being lost. Set new stake by single proportionate method between the Quarter Corner common to Sections 19 & 24 and the Quarter Corner common to Section 7 & 12. Bearing trees are not identified in notes.

Jan. 7th, 1944: E. F. Kowalke, Surveyor, notes in old field Book #1, that he recovered Burnett's stake rotted & standing, replaced it with a new Tamarack post from which Burnett's Tamarack rotted & down bears N17°E, 8 feet. Marked new bearing trees: 18" W. Pine, N33°W, 122.1 feet; a 24" W. Pine, S51°W, 85.8 feet.

March 24th, 1995: James D. Rein, Registered Land Surveyor No. 1234, recovered a 2" dia. iron pipe and a 4" x 4" scribed post from which: Kowalke's 33" White Pine, bears N31°W, 122.32 feet; and Kowalke's 30" White Pine, bears S53°W, 86.82 feet. Replaced iron pipe with a capped 2" dia. x 60" long aluminum drive-in cone monument. Set plastic corner marker stake 1 foot Northeast of the corner monument. See plan view for additional corner reference ties.

(c) (d) (e) Plan view of corner with ties to at least 4 witness monuments. If in disagreement with previously established corner, show the distances between the two corners and also indicate the ties to the disputed corner.



SCALE 1" = 50'



(i) I, James D. Rein, Registered Land Surveyor No. 1234  
 (type or print name) certify that the corner location on this record was determined by me or under my direction and control and that this U.S. Public Land Survey Monument Record is correct and complete to the best of my knowledge and belief.

James D. Rein March 27th, 1995  
 Signature Date

3905130000

Index No. N-25